



3500 Annapolis Lane North, Minneapolis, MN 55447
 Telephone: (763) 509-2084 Telefax: (763) 559-0108

Unit Specification

KE07206
Ramped Valve Driver

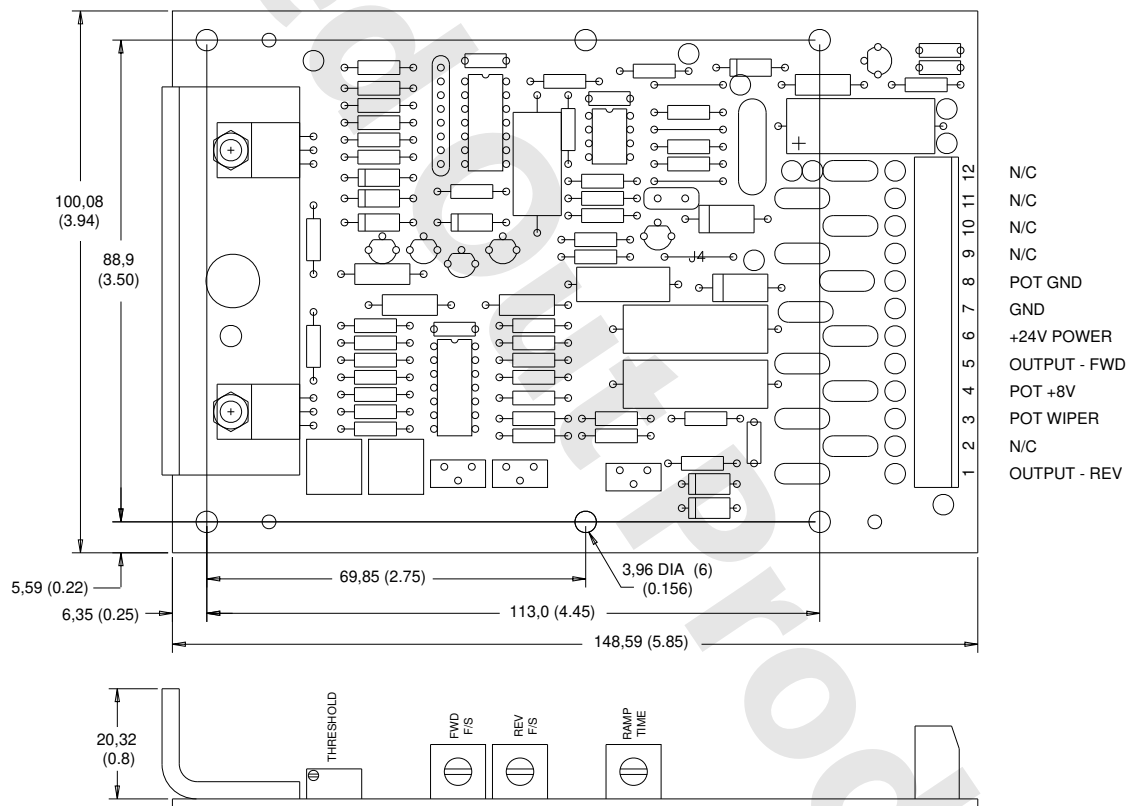
ISSUE: 1

DATE: May 1993

GENERAL DESCRIPTION

This device is a ramped valve driver which accepts a setpoint potentiometer input from a control handle and drives a dual coil electrical displacement control. It is pulse width modulated and has adjustable acceleration/deceleration ramping. The threshold, full stroke forward and full stroke reverse outputs are adjustable.

DIMENSION AND CONNECTION DIAGRAM



1693

Dimensions in millimeters (inches).

OUTPUT CHARACTERISTICS

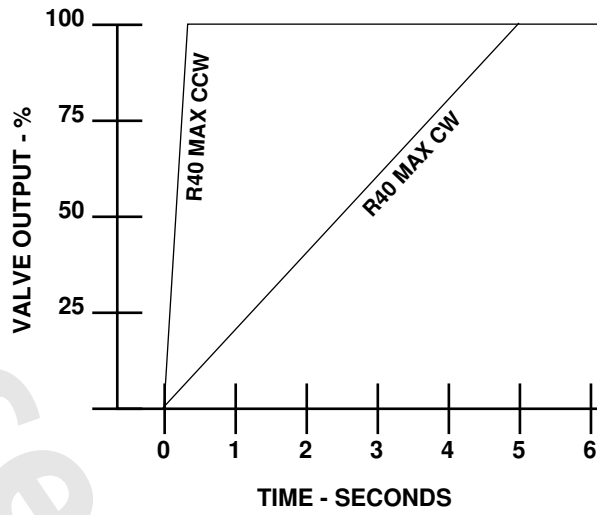
SUPPLY VOLTAGE
 24 Vdc

OUTPUT CURRENT
 200 mA

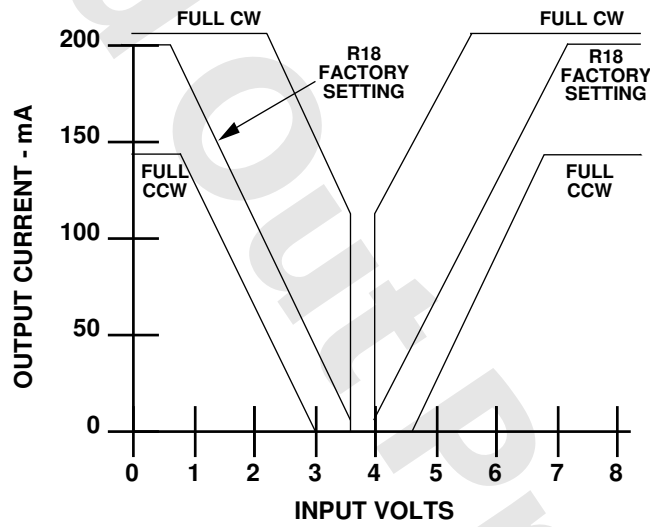
PWM FREQUENCY
 1,000 Hz

FACTORY SETTINGS WITH 22 OHM LOAD
 Threshold: 10 mA
 Full Stroke 200 mA

ADJUSTMENTS

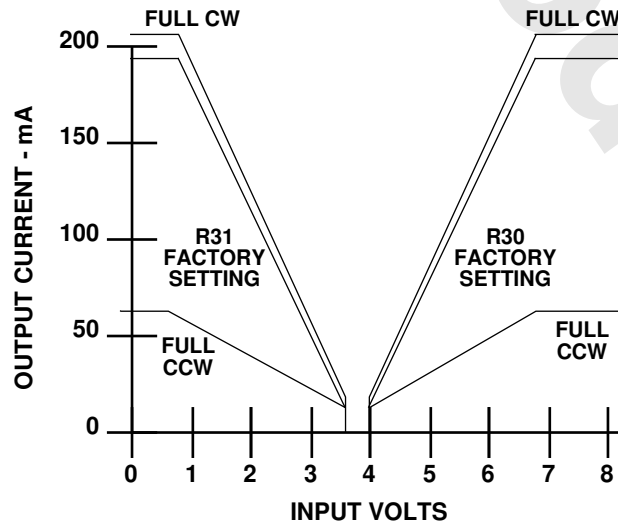


1679



1690

Threshold adjustment.



1691

Full stroke adjustment.