

ENGINEERING
TOMORROW



50 and 60Hz CN Catalogue

Danfoss **Light Commercial Refrigeration** Compressors HB, HJ, HS, H, U, L, P Ranges

R134a | R404A | R290



Contents

General Information..... 4

 Labels and Approvals 4

 Compressor Nomenclature 5

 Voltage..... 6

 Applications..... 6

Compressors Catalogue 7

 Operating Envelope 7

 Types of Electrical Motors 9

 How to read this Catalogue..... 10

 R134a..... 11

 R404A/R507 14

 R290..... 17

Technical Information 20

 Compressor Dimensional Drawings 21

 Packaging 23

 Fixings 24

 Wiring Diagrams and Electrical Assembly 25

Spare parts list 31

Labels and Approvals



Approvals



Directive compliance declarations



Flammable gases



Compressor Nomenclature



Indicates refrigerant.

G = R134a **N** = R290
M = R404A/R507

Indicates compressor range (overall design).

P = P range **U/E** = U range **B** = HB range
L = L range **H** = H range **J** = HJ range **S** = HS range

Indicates energy efficiency level. Not appearing in case of Standard efficiency.

For R134a and R404a:

M = Medium
Y = High Efficiency - Run Capacitor Optional RSIR/RSCR or CSIR/CSR
T = Top Efficiency - Run Capacitor RSCR or CSR

For R290:

C, G, M, Y, T = where C corresponds to standard level and T to the top

Indicates approximate compressor displacement under the following rule:

10 to 18: The approx. displacement in cm³/rev (MP16FG-> approx 16 cm³/rev)
30 to 90: 10 times the approx. displacement in cm³/rev (GE80CA-> approx 8 cm³/rev)

Indicates the starting torque, application type and compressor cooling:

A = LBP - LST - S	R = HMBP - HST - FAN	L = LBP - HST - Fan (Current Relay)
C = LBP - LST - FAN	(CSR versions with Current Relay)	N = LMBP - LST/HST - S/FAN
F = LBP - HST - FAN	T = HMBP - HST - FAN	
	(CSR versions with Potential Relay)	

Indicates the rated voltage:

A, B, Z = 220-240V 50Hz	G = 200-220V 50Hz / 220-230V 60Hz
C = 100V 50/60Hz	R, M = 115-127V 60Hz
D, E = 115V 60Hz	U = 200-240V 50Hz

Indicates a variant of the model that only affects the configuration of electrical components.

a = no use of running capacitor
b = use of running capacitor

Voltage

The standards consider the voltage variation of the network to be within +/- 6% of its rated value, nevertheless the motors' design is able to work within -15% of the lowest rating and +10% of the highest rating.

Compressor Voltage Versions		
Voltage version	Compressor rating	Voltage operative range
A or B	220-240V 50Hz	187-264 V 50 Hz
Z*	220-240V 50Hz	145-264V/50Hz
C	100 V 50/60 Hz	85-110 V 50/60 Hz
D or E	115 V 60 Hz	98-127 V 60 Hz
G	200- 220/220-230 V 50/60 Hz	170-242/187-253 V 50/60 Hz
R or M	M or R 115-127V 60Hz 98-140V 60Hz	115-127V 60Hz 98-140V 60Hz
U	220-240V 60Hz	187-264 V 60 Hz

* Z - is a special version dedicated to very unstable electrical supply conditions

Applications

Based on the characteristics of the system for which the compressor is intended, compressors are classified in different groups of application.

Low Back Pressure (LBP) Compressors

Evaporating temperature range:
-35°C to -10°C [-31°F to -14°F] (down to -40°C [-40°F] for refrigerant R404A and R290).

Rating Condition
-23.3°C [-10°F] (ASHRAE)

Low-Medium Back Pressure (LMBP) Compressors

Evaporating temperature range:
-35°C to 0°C [-31°F to +32°F] (down to -40°C [-40°F] for refrigerant R404A and R290).

Rating Condition
-23.3°C [-10°F] (ASHRAE)

High Medium Back Pressure (HMBP) Compressors

Evaporating temperature range:
-25°C to +10°C [-13°F to +50°F]

Rating Condition
+7.2°C [+45°F] (ASHRAE)

High Back Pressure (HBP) Compressors

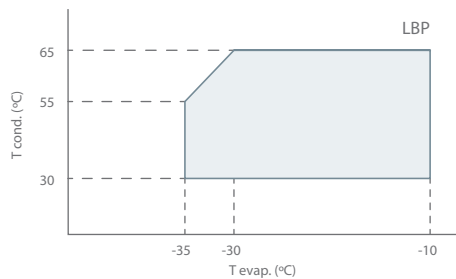
Evaporating temperature range:
-15°C to +10°C [+5°F to +50°F]

Rating Condition
+7.2°C [+45°F] (ASHRAE)

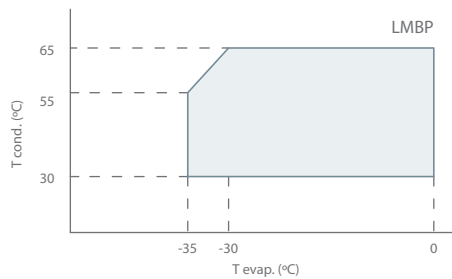
Operating Envelope

In order to grant the compressor reliability it is recommended that the point representing the operating conditions (suction and discharge pressures) falls within the shadowed area of the corresponding graph.

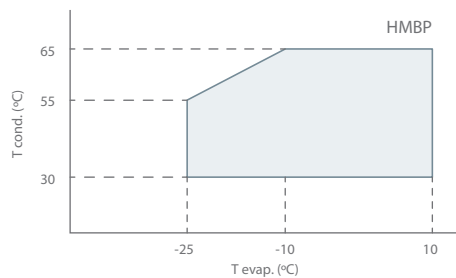
R134a LBP



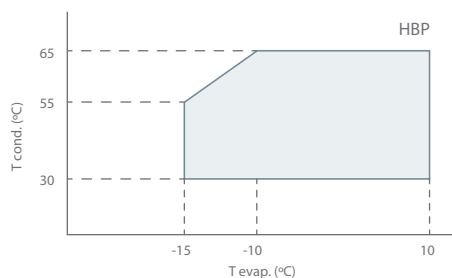
R134a LMBP



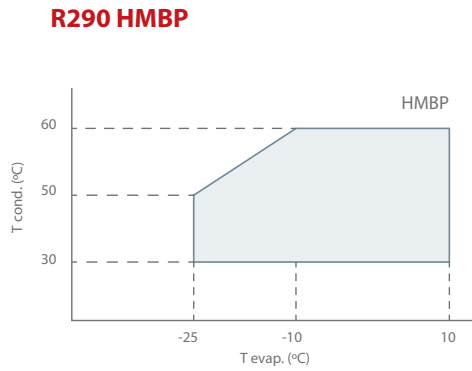
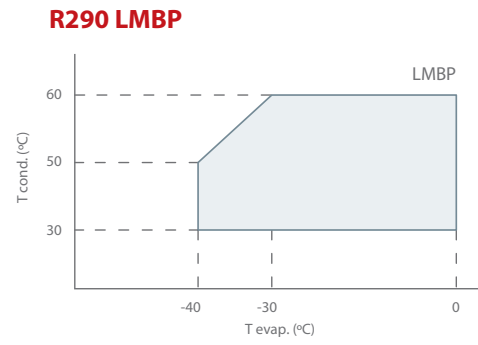
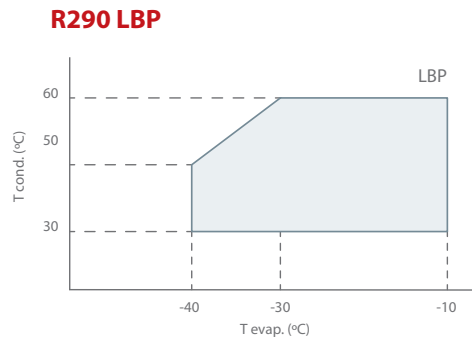
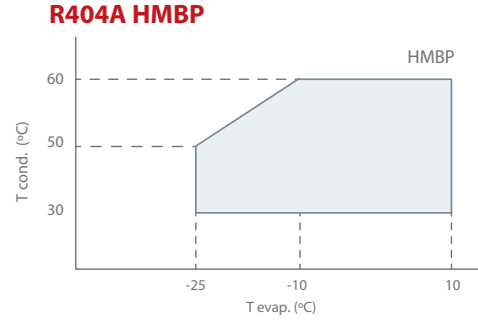
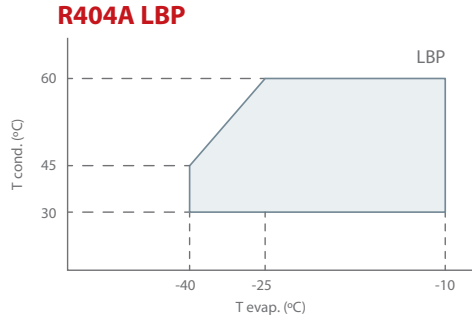
R134a HMBP



R134a HBP



Danfoss Light Commercial Refrigeration Compressors





Types of Electrical Motors

RSIR (Resistance Start-Induction Run)

LST motor. No capacitors. Auxiliary winding is disconnected after start up. Standard energy efficiency.

CSIR (Capacitor Start-Induction Run)

HST motor. With starting capacitor. Auxiliary winding is disconnected after start up. Standard efficiency.

RSCR (Resistance Start-Capacitor Run)

LST motor. With running capacitor. Auxiliary winding remains connected after start up. Used for high efficiency in small capacity compressors (particularly in household refrigeration)

CSR (Capacitor Start and Run)

HST motor. Two capacitors (starting and running). Auxiliary winding remains connected after start up. Used for high efficiency in small compressors and for size reduced size motors in compressors with comparatively large displacements.

Single phase motor classification

Capacitor type	HST With starting capacitor		LST Without starting capacitor	
With Running capacitor	Motor type: CSR	Starting device: Current relay or Potential relay	Motor type: RSCR	Starting device: PTC
Without Running capacitor	Motor type: CSIR	Starting device: Current Relay	Motor type: RSIR	Starting device: Current Relay or PTC

Type of starting device

Current relay – (electromechanical). RSIR/CSIR motors and CSR low/medium-power motors with NTC (the NTC is connected in series with the starting capacitor and the main purpose is to reduce the current peaks in the relay contacts)

Potential relay – (electromechanical). CSR high-power motors.

PTC – (Positive Temperature Coefficient), the resistance increases with the temperature. Device only with RSIR or RSCR motors in the (Small L, B), L and P ranges.

NTC – (Negative Temperature Coefficient), the resistance decreases with the temperature. Used in some CSR in order to reduce dimensions and components.

Type of torque

LST – Low Starting Torque – Systems with capillary tube or balanced pressures at start up.

HST – High Starting Torque – Systems with expansion valve or capillary tube, with unbalanced pressures at start up.

How to read this Catalogue

Compressors

MODEL	DANFOSS CODE (P)	PLATFORM	DISPLACEMENT cm ³	COOLING	VOLTAGE FREQUENCY	MOTOR	STARTING	EXPANSION	REFRIGERATION CAPACITY [W] at ASRAE conditions Evaporating Temperature °C							WEIGHT Kg	HEIGHT mm	DIAGRAM	CERTIFICATES	
									ASHRAE		-35	-30	-25	-20	-15					-10
									W	COP										
									-23.3											
GB40AA	125B1127	HB	4.1	S	220-240V/50Hz	RSIR	P	C	110	1.15	50	71	96	128	162	204	6.3	161	D14	CE
GU55AA	125B11	U	5.5	S	220-240V/50Hz	RSIR	P	C	150	1.28	71	100	135	180	228	288	8.3	169	D14	CE
GU60AA	125B1128	U	6	S	220-240V/50Hz	RSIR	P	C	170	1.28	81	113	153	203	258	326	8.3	167	D14	CE
GU70AA	125B1111	U	6.7	S	220-240V/50Hz	RSIR	P	C	190	1.2	91	127	171	227	289	365	8.6	169	D14	CE
GE80CA	125B1130	U	8.1	F	220-240V/50Hz	RSIR	P	C	235	1.3	113	158	213	279	359	454	8.5	176	D14	CE
GU80CA	125B1129	U	8.1	F	220-240V/50Hz	RSIR	P	C	225	1.25	108	152	205	269	346	438	8.9	176	D14	CE
GUY80AAb	125B1122	U	8.1	S	220-240V/50Hz	RSCR	P	C	235	1.65	100	142	202	269	350	435	9.4	176	D15	CE
GH90Lab	125B1126	H	9	F	220-240V/50Hz	CSR	R	C-V	270	1.35	127	178	239	317	404	512	10.4	193	D12	CE
GH90CA	125B1113	H	9	F	220-240V/50Hz	RSIR	P	C	270	1.3	127	178	239	317	404	512	11.0	193	D14	CE
GH12FAb	125B1131	H	11.3	F	220-240V/50Hz	CSR	R	C-V	330	1.35	140	200	283	378	492	623	11.2	193	D12	CE
GH12FA	125B1114	H	11.3	F	220-240V/50Hz	CSIR	R	C-V	330	1.3	140	200	283	378	492	623	11.2	193	D11	CE CCC VDE
GH14FAb	125B1125	H	13.1	F	220-240V/50Hz	CSR	R	C-V	380	1.35	187	259	347	450	582	723	11.4	193	D12	CE
GH14FA	125B1115	H	13.1	F	220-240V/50Hz	CSIR	R	C-V	380	1.28	187	259	347	450	582	723	11.2	193	D11	CE CCC VDE
GH16FA	125B1116	H	15.3	F	220-240V/50Hz	CSIR	R	C-V	430	1.28	206	296	399	521	668	842	11.2	193	D11	CE CCC VDE
GB30AG	125B1139	HJ	3	S	220-240V/50-60Hz	RSIR	P	C	78	0.95	37	52	71	94	119	151	4.3	130	D14	CE
GE55AG	125B1117	U	5.5	S	220-240V/50-60Hz	RSIR	P	C	155	1.1	71	100	135	180	228	288	7.9	169	D14	CE CCC VDE
GE60AG	125B1118	U	6	S	220-240V/50-60Hz	RSIR	P	C	175	1.1	81	113	153	203	258	326	8.3	169	D14	CE CCC VDE
GE70CG	125B1119	U	6.7	F	220-240V/50-60Hz	RSIR	P	C	190	1.15	91	127	171	227	289	365	8.3	169	D14	CE
GU80LG	125B1120	U	8.1	F	220-240V/50-60Hz	CSIR	R	C-V	235	1.35	100	142	202	269	350	435	9.2	174	D6	CE
GB40AZ	125B1146	HB	4.1	S	220-240V/50Hz**	RSIR	P	C	110	1.1	50	71	96	128	162	204	6.3	161	D14	CE
GS45AZ	125B1147	HS	4.5	S	220-240V/50Hz**	RSIR	P	C	125	1.2	57	81	109	145	184	232	7.1	168	D14	CE
GU60AZb	125B1148	U	6	S	220-240V/50Hz**	RSCR	P	C	175	1.52	80	113	152	203	257	325	8.9	176	D15	CE

R134a



Danfoss Light Commercial Refrigeration Compressors

R134a LBP 50Hz

MODEL	DANFOSS CODE (a)	PLATFORM	DISPLACEMENT m ³	COOLING	VOLTAGE FREQUENCY	MOTOR	STARTING	EXPANSION	REFRIGERATION CAPACITY [W] at ASRAE conditions Evaporating Temperature °C								WEIGHT Kg	HEIGHT mm	DIAGRAM	CERTIFICATES
									ASHRAE		-35	-30	-25	-20	-15	-10				
									-23.3											
									W	COP										
GB40AA	125B1127	HB	4.1	S	220-240V/50Hz	RSIR	P	C	110	1.15	50	71	96	128	162	204	6.3	161	D14	CE
GU55AA	125B1197	U	5.5	S	220-240V/50Hz	RSIR	P	C	150	1.28	71	100	135	180	228	288	8.3	169	D14	CE
GU60AA	125B1128	U	6	S	220-240V/50Hz	RSIR	P	C	170	1.28	81	113	153	203	258	326	8.3	167	D14	CE
GU70AA	125B1111	U	6.7	S	220-240V/50Hz	RSIR	P	C	190	1.2	91	127	171	227	289	365	8.6	169	D14	CE
GE80CA	125B1130	U	8.1	F	220-240V/50Hz	RSIR	P	C	235	1.3	113	158	213	279	359	454	8.5	176	D14	CE
GU80CA	125B1129	U	8.1	F	220-240V/50Hz	RSIR	P	C	225	1.25	108	152	205	269	346	438	8.9	176	D14	CE
GUY80AAb	125B1122	U	8.1	S	220-240V/50Hz	RSCR	P	C	235	1.65	100	142	202	269	350	435	9.4	176	D15	CE
GH90LAB	125B1126	H	9	F	220-240V/50Hz	CSR	R	C-V	270	1.35	127	178	239	317	404	512	10.4	193	D12	CE
GH90CA	125B1113	H	9	F	220-240V/50Hz	RSIR	P	C	270	1.3	127	178	239	317	404	512	11.0	193	D14	CE
GH12FAB	125B1131	H	11.3	F	220-240V/50Hz	CSR	R	C-V	330	1.35	140	200	283	378	492	623	11.2	193	D12	CE
GH12FA	125B1114	H	11.3	F	220-240V/50Hz	CSIR	R	C-V	330	1.3	140	200	283	378	492	623	11.2	193	D11	CE CCC VDE
GH14FAB	125B1125	H	13.1	F	220-240V/50Hz	CSR	R	C-V	380	1.35	187	259	347	450	582	723	11.4	193	D12	CE
GH14FA	125B1115	H	13.1	F	220-240V/50Hz	CSIR	R	C-V	380	1.28	187	259	347	450	582	723	11.2	193	D11	CE CCC VDE
GH16FA	125B1116	H	15.3	F	220-240V/50Hz	CSIR	R	C-V	430	1.28	206	296	399	521	668	842	11.2	193	D11	CE CCC VDE
GB30AG	125B1139	HJ	3	S	220-240V/50-60Hz	RSIR	P	C	78	0.95	37	52	71	94	119	151	4.3	130	D14	CE
GE55AG	125B1117	U	5.5	S	220-240V/50-60Hz	RSIR	P	C	155	1.1	71	100	135	180	228	288	7.9	169	D14	CE CCC VDE
GE60AG	125B1118	U	6	S	220-240V/50-60Hz	RSIR	P	C	175	1.1	81	113	153	203	258	326	8.3	169	D14	CE CCC VDE
GE70CG	125B1119	U	6.7	F	220-240V/50-60Hz	RSIR	P	C	190	1.15	91	127	171	227	289	365	8.3	169	D14	CE
GU80LG	125B1120	U	8.1	F	220-240V/50-60Hz	CSIR	R	C-V	235	1.35	113	158	213	279	359	454	9.2	174	D6	CE
GB40AZ	125B1146	HB	4.1	S	220-240V/50Hz**	RSIR	P	C	110	1.1	50	71	96	128	162	204	6.3	161	D14	CE
GS45AZ	125B1147	HS	4.5	S	220-240V/50Hz**	RSIR	P	C	125	1.2	57	81	109	145	184	232	7.1	168	D14	CE
GU60AZb	125B1148	U	6	S	220-240V/50Hz**	RSCR	P	C	175	1.52	80	113	152	203	257	325	8.9	176	D15	CE

R134a LBP / LMBP 60Hz

MODEL	DANFOSS CODE (a)	PLATFORM	DISPLACEMENT m ³	COOLING	VOLTAGE FREQUENCY	MOTOR	STARTING	EXPANSION	REFRIGERATION CAPACITY [W] at ASRAE conditions Evaporating Temperature °C								WEIGHT Kg	HEIGHT mm	DIAGRAM	CERTIFICATES		
									ASHRAE		-35	-30	-25	-20	-15	-10					-15	0
									-23.3													
									W	COP												
GB30AG	125B1139	HJ	3	S	220-240V/50-60Hz	RSIR	P	C	90	1.05	43	61	82	109	138	175	4.3	130	D14	CE		
GE55AG	125B1117	U	5.5	S	220-240V/50-60Hz	RSIR	P	C	175	1.15	82	116	157	209	264	334	7.9	169	D14	CE CCC VDE		
GE60AG	125B1118	U	6	S	220-240V/50-60Hz	RSIR	P	C	195	1.15	94	131	177	235	299	378	8.3	169	D14	CE CCC VDE		
GE70CG	125B1119	U	6.7	F	220-240V/50-60Hz	RSIR	P	C	208	1.27	106	147	198	263	335	423	8.3	169	D14	CE		
GU80LG	125B1120	U	8.1	F	220-240V/50-60Hz	CSIR	R	C-V	280	1.5	134	188	253	332	427	540	9.2	174	D6	CE		
GUY60NR	125B1301	U	6	S/F	115-127V/60Hz	CSIR	R	C-V	210	1.47	100	140	190	252	320	404	494	590	7.9	174	D6	CE
GUY70NR	125B1302	U	6.7	S/F	115-127V/60Hz	CSIR	R	C-V	239	1.47	114	160	217	287	365	461	563	672	8.3	174	D6	CE UL
GUY80NR	125B1303	U	8.1	S/F	115-127V/60Hz	CSIR	R	C-V	270	1.47	136	190	258	342	434	549	641	766	8.3	174	D6	CE
GH12FE	125B1144	H	11.3	F	115V/60HZ	CSIR	R	C-V	380	1.3	161	230	325	434	565	716	11.4	193	D11	CE UL		

Note:

** - is a special version dedicated to very unstable electrical supply conditions

Danfoss Light Commercial Refrigeration Compressors

R134a HBP / HMBP 50Hz

MODEL	DANFOSS CODE (a)	PLATFORM	DISPLACEMENT cm ³	COOLING	VOLTAGE FREQUENCY	MOTOR	STARTING	EXPANSION	REFRIGERATION CAPACITY [W] at ASRAE conditions Evaporating Temperature °C										WEIGHT Kg	HEIGHT mm	DIAGRAM	CERTIFICATES
									ASHRAE		-25	-20	-15	-10	-5	0	5	10				
									7.2	COP												
									W													
GE70TB	125B1504	U	6.7	F	220-240V/50Hz	CSIR	R	C-V	705	2.45	185	230	284	347	439	548	670	807	8.9	174	D6	CE CCC VDE
GU80TB	125B1522	U	8.1	F	220-240V/50Hz	CSIR	R	C-V	830	2.3	215	270	327	399	505	630	771	928	8.9	174	D6	CE
GU90TB	125B1709	U	8.9	F	220-240V/50Hz	CSIR	R	C-V	910	2.2	0	0	360	455	570	703	868	1051	8.9	174	D6	CE CCC VDE
GH12TB	125B1710	H	11.3	F	220-240V/50Hz	CSIR	R	C-V	1000	2.2	0	0	396	508	639	795	975	1185	10.8	193	D11	CE CCC VDE
GH14TB	125B1711	H	13.1	F	220-240V/50Hz	CSIR	R	C-V	1160	2.2	0	0	459	588	741	921	1131	1374	10.8	193	D11	CE CCC VDE
GH16TB	125B1712	H	15.3	F	220-240V/50Hz	CSIR	R	C-V	1300	2.15	0	0	536	687	866	1075	1321	1605	11.5	193	D11	CE CCC VDE
GPY12RAa	125B1508	P	12.1	F	220-240V/50Hz	CSIR	R	C-V	1183	2.35	290	365	455	558	712	883	1087	1316	12.6	211	D1	CE CCC VDE
GPY12RAB	125B1509	P	12.1	F	220-240V/50Hz	CSR	R	C-V	1183	2.58	290	365	455	558	712	883	1087	1316	12.6	211	D3	CE CCC VDE
GPY14RAB	125B1511	P	14.32	F	220-240V/50Hz	CSR	R	C-V	1380	2.5	350	430	530	651	830	1029	1268	1534	12.6	211	D3	CE CCC VDE
GPY16RAB	125B1513	P	16.15	F	220-240V/50Hz	CSR	R	C-V	1500	2.35	380	467	576	708	902	1119	1378	1667	12.8	211	D3	CE CCC VDE
GPT18RA	125B1713	P	18	F	220-240V/50Hz	CSR	R	C-V	1650	2.2	0	0	660	850	1061	1292	1574	1870	12.8	211	D3	CE CCC VDE
GU45TG	125B1514	U	4.5	F	200-230V/50Hz 220-240V/60Hz	CSIR	R	C-V	470	2.4	96	128	167	211	272	341	421	515	8.6	174	D6	CE CCC VDE
GU60TG	125B1714	U	6	F	200-230V/50Hz 220-240V/60Hz	CSIR	R	C-V	640	2.4	0	0	230	291	375	471	581	711	8.6	174	D6	CE CCC VDE
GE70TG	125B1715	U	6.7	F	220-240V/50Hz 230V/60Hz	CSIR	R	C-V	705	2.2	0	0	284	347	439	548	670	807	8.6	174	D6	CE CCC VDE
GE80TG	125B1716	U	8.1	F	220-240V/50Hz 230V/60Hz	CSIR	R	C-V	830	2.2	0	0	327	399	505	630	771	928	8.9	174	D6	CE CCC VDE
GP12TG	125B1515	P	12.05	F	200-220V/50Hz 220-230V/60Hz	CSIR	R	C-V	1070	2.02	0	0	410	503	641	795	979	1186	11.2	198	D1	CE CCC VDE
GP14TG	125B1516	P	12.05	F	200-220V/50Hz 220-230V/60Hz	CSIR	R	C-V	1180	2.03	210	299	414	551	712	898	1108	1341	12.9	211	D1	CE CCC VDE
GP16TG	125B1717	P	14.32	F	200-220V/50Hz 230V/60Hz	CSR	R	C-V	1383	2.09	0	0	530	651	830	1029	1268	1534	12.9	211	D3	CE CCC VDE
GPT16RG	125B1718	P	16.15	F	200-220V/50Hz 220-230V/60Hz	CSR	R	C-V	1500	2.2	0	0	576	708	902	1119	1378	1667	12.3	211	D3	CE CCC VDE

R134a HBP / HMBP 60Hz

MODEL	DANFOSS CODE (a)	PLATFORM	DISPLACEMENT cm ³	COOLING	VOLTAGE FREQUENCY	MOTOR	STARTING	EXPANSION	REFRIGERATION CAPACITY [W] at ASRAE conditions Evaporating Temperature °C										WEIGHT Kg	HEIGHT mm	DIAGRAM	CERTIFICATES
									ASHRAE		-25	-20	-15	-10	-5	0	5	10				
									7.2	COP												
									W													
GU45TG	125B1514	U	4.5	F	200-230V/50Hz 220-240V/60Hz	CSIR	R	C-V	545	2.5	113	145	191	249	322	407	506	616	8.6	174	D6	CE CCC VDE
GU60TG	125B1714	U	6	F	200-230V/50Hz 220-240V/60Hz	CSIR	R	C-V	739	2.5	0	0	265	335	431	542	668	818	8.6	174	D6	CE CCC VDE
GE70TG	125B1715	U	6.7	F	220-240V/50Hz 230V/60Hz	CSIR	R	C-V	832	2.2	0	0	335	409	518	647	791	952	8.6	174	D6	CE CCC VDE
GE80TG	125B1716	U	8.1	F	220-240V/50Hz 230V/60Hz	CSIR	R	C-V	980	2.2	0	0	386	471	596	744	910	1095	8.9	174	D6	CE CCC VDE
GP12TG	125B1515	P	12.05	F	200-220V/50Hz 220-230V/60Hz	CSIR	R	C-V	1251	1.93	0	0	436	578	745	936	1150	1387	11.2	198	D1	CE CCC VDE
GP14TG	125B1516	P	12.05	F	200-220V/50Hz 220-230V/60Hz	CSIR	R	C-V	1401	2.03	244	347	480	639	826	1042	1285	1556	12.9	211	D1	CE CCC VDE
GP16TG	125B1717	P	14.32	F	200-220V/50Hz 230V/60Hz	CSR	R	C-V	1682	2	0	0	611	795	1014	1265	1550	1869	12.9	211	D3	CE CCC VDE
GPT16RG	125B1718	P	16.15	F	200-220V/50Hz 220-230V/60Hz	CSR	R	C-V	1814	2.33	0	0	714	889	1107	1367	1668	2012	12.3	211	D3	CE CCC VDE
GPY14RMB	125B1723	P	14.32	F	115-127V/60Hz	CSR	R	C-V	1706	2.36	0	0	670	850	1047	1281	1529	1851	12.8	211	D3	CE UL

CONDITIONS	
ASHRAE	
LBP/LMBP	HMBP/HBP

Evaporating temperature °C	-23.2	7.2
Condensing temperature °C	55	55
Liquid temperature °C	32	46
Suction temperature °C	32	35
Ambient temperature °C	32	35

R404A/R507



Danfoss Light Commercial Refrigeration Compressors

R404A LBP 50Hz

MODEL	DANFOSS CODE (a)	PLATFORM	DISPLACEMENT cm ³	COOLING	VOLTAGE FREQUENCY	MOTOR	STARTING	EXPANSION	REFRIGERATION CAPACITY [W] at ASRAE conditions Evaporating Temperature °C								WEIGHT		DIAGRAM	CERTIFICATES	
									ASHRAE		-40	-35	-30	-25	-20	-15	-10	Kg			mm
									-23.3	W											
																		W			COP
MLY80LAa	125B2103	L	8.1	F	220-240V/50Hz	CSIR	R	C-V	407	1.28	157	216	287	372	472	582	719	11.6	198	D1	CE
MLY80LAb	125B2104	L	8.1	F	220-240V/50Hz	CSR	R	C-V	407	1.38	157	216	287	372	472	582	719	11.6	198	D3	CE CCC VDE
MLY90LAa	125B2105	L	9.09	F	220-240V/50Hz	CSIR	R	C-V	459	1.28	177	244	324	420	533	661	813	11.9	198	D1	CE CCC VDE
MP14FB	125B2107	P	14.2	F	220-240V/50Hz	CSIR	R	C-V	610	1.12	255	352	466	605	768	952	1170	13.9	211	D1	CE CCC VDE
MPT12LA	125B2108	P	12.1	F	220-240V/50Hz	CSR	R	C-V	662	1.42	255	352	466	605	768	952	1170	13.0	211	D3	CE CCC VDE
MPT14LA	125B2109	P	14.32	F	220-240V/50Hz	CSR	R	C-V	779	1.4	325	438	577	742	948	1156	1376	13.4	211	D3	CE CCC VDE
MPT16LA	125B2110	P	16.15	F	220-240V/50Hz	CSR	R	C-V	887	1.4	346	484	627	813	1026	1274	1557	13.0	211	D3	CE CCC VDE
MPT18LA	125B2117	P	18	F	220-240V/50Hz	CSR	R	C-V	970	1.3	361	503	678	887	1128	1403	1711	13.2	211	D3	CE
MP12FG	125B2113	P	12.05	F	200-220V/50Hz 220-230V/60Hz	CSIR	R	C-V	522	1.16	202	278	368	478	606	752	923	12.7	211	D1	CE CCC VDE
MP14FG	125B2114	P	14.2	F	200-220V/50Hz 230V/60Hz	CSIR	R	C-V	610	1.12	242	333	441	573	727	902	1108	13.0	211	D1	CE CCC VDE
MP16FG	125B2115	P	16.15	F	200-220V/50Hz 230V/60Hz	CSIR	R	C-V	887	1.35	346	484	627	813	1026	1274	1557	13.0	211	D1	CE CCC VDE

R404A LBP 60Hz

MODEL	DANFOSS CODE (a)	PLATFORM	DISPLACEMENT cm ³	COOLING	VOLTAGE FREQUENCY	MOTOR	STARTING	EXPANSION	REFRIGERATION CAPACITY [W] at ASRAE conditions Evaporating Temperature °C								WEIGHT		DIAGRAM	CERTIFICATES	
									ASHRAE		-40	-35	-30	-25	-20	-15	-10	Kg			mm
									-23.3	W											
																		W			COP
MP12FG	125B2113	P	12.05	F	200-220V/50Hz 220-230V/60Hz	CSIR	R	C-V	612	1.19	162	266	396	553	737	946	1183	12.7	211	D1	CE CCC VDE
MP14FG	125B2114	P	14.2	F	200-220V/50Hz 230V/60Hz	CSIR	R	C-V	733	1.15	190	319	477	664	879	1122	1394	13.0	211	D1	CE CCC VDE
MP16FG	125B	P	16.15	F	200-220V/50Hz 230V/60Hz	CSIR	R	C-V	1020	1.28	397	556	721	934	1179	1465	1790	13.0	211	D1	CE CCC VDE
MLT90LD	125B2111	L	9.09	F	115V/60Hz	CSR	R	C-V	550	1.4	212	293	389	504	640	793	976	10.3	198	D3	CE UL
MPT12LD	125B2116	P	12.1	F	115V/60Hz	CSR	R	C-V	756	1.41	291	401	531	690	876	1085	1334	11.5	211	D3	CE UL

Danfoss Light Commercial Refrigeration Compressors

R404A HMBP 50Hz

MODEL	DANFOSS CODE (2)	PLATFORM	DISPLACEMENT cm ³	COOLING	VOLTAGE FREQUENCY	MOTOR	STARTING	EXPANSION	REFRIGERATION CAPACITY [W] at ASRAE conditions Evaporating Temperature °C									WEIGHT Kg	HEIGHT mm	DIAGRAM	CERTIFICATES	
									ASHRAE		-25	-20	-15	-10	-5	0	5					10
									7.2	W												
									W	COP												
ML80TG	125B2501	L	7.57	F	200-240V/50Hz 230V/60Hz	CSIR	R	C-V	1105	1.99	220	300	403	528	675	845	1038	1253	11.2	198	D1	CE CCC VDE
ML90TG	125B2502	L	8.86	F	200-220V/50Hz 230V/60Hz	CSIR	R	C-V	1326	1.98	264	360	483	633	810	1014	1246	1504	11.2	198	D1	CE CCC VDE
MP12RB	125B2503	P	12.05	F	220-240V/50Hz	CSR	R	C-V	1838	2.3	369	504	676	886	1134	1420	1744	2106	13.5	211	D3	CE CCC VDE
MP14RB	125B2504	P	14.2	F	220-240V/50Hz	CSR	R	C-V	2093	2.14	405	554	743	974	1247	1562	1919	2317	13.5	211	D3	CE CCC VDE

R404A HMBP 60Hz

MODEL	DANFOSS CODE (2)	PLATFORM	DISPLACEMENT cm ³	COOLING	VOLTAGE FREQUENCY	MOTOR	STARTING	EXPANSION	REFRIGERATION CAPACITY [W] at ASRAE conditions Evaporating Temperature °C									WEIGHT Kg	HEIGHT mm	DIAGRAM	CERTIFICATES	
									ASHRAE		-25	-20	-15	-10	-5	0	5					10
									7.2	W												
									W	COP												
ML80TG	125B2501	L	7.57	F	200-240V/50Hz 230V/60Hz	CSIR	R	C-V	1290	1.96	305	403	521	659	817	996	1196	1416	11.2	198	D1	CE CCC VDE
ML90TG	125B2502	L	8.86	F	200-220V/50Hz 230V/60Hz	CSIR	R	C-V	1551	1.89	381	490	626	789	979	1194	1436	1704	11.2	198	D1	CE CCC VDE

CONDITIONS		
ASHRAE		
	LBP/LMBP	HMBP/HBP

Evaporating temperature °C	-23.2	7.2
Condensing temperature °C	55	55
Liquid temperature °C	32	46
Suction temperature °C	32	35
Ambient temperature °C	32	35

R290



Danfoss Light Commercial Refrigeration Compressors

R290 LBP / LMBP 50Hz

MODEL	DANFOSS CODE (a)	PLATFORM	DISPLACEMENT cm ³	COOLING	VOLTAGE FREQUENCY	MOTOR	STARTING	EXPANSION	REFRIGERATION CAPACITY [W] at ASRAE conditions Evaporating Temperature °C										WEIGHT Kg	HEIGHT mm	DIAGRAM	CERTIFICATES	
									ASHRAE		-40	-35	-30	-25	-20	-15	-10	-5					0
									W	COP													
NUT40NAb	125B3309	U	4.5	S/F	220-240V/50Hz	RSCR	P	C	180	1.72	79	98	132	165	207	255	314	389	462	9.0	174	D5	CE
NSG45CAb	125B3133	HS	4.5	S	220-240V/50Hz	RSCR	P	C	200	1.55	96	126	164	211	265	325	403			6.8	165	D5	CE
NUY45LAa	125B3101	U	4.5	S/F	220-240V/50Hz	CSIR	R	C-V	200	1.48	86	113	147	189	238	292	362			8.5	174	D6	CE CCC VDE
NUY55CAa	125B3106	U	5.5	S/F	220-240V/50Hz	RSIR	P	C	260	1.45	114	143	192	239	300	370	455			8.3	174	D4	CE
NUY55CAb	125B3108	U	5.5	S/F	220-240V/50Hz	RSCR	P	C	260	1.55	114	143	192	239	300	370	455			8.3	174	D5	CE
NUT55NAb	125B3310	U	5.5	S/F	220-240V/50Hz	RSCR	P	C	260	1.72	114	143	192	239	300	375	460	555	660	9.0	174	D5	CE
NUY55LAa	125B3107	U	5.5	S/F	220-240V/50Hz	CSIR	R	C-V	260	1.45	114	143	192	239	300	370	455			8.3	174	D6	CE
NUY55LAb	125B3109	U	5.5	S/F	220-240V/50Hz	CSR	R	C-V	260	1.55	114	143	192	239	300	370	455			8.3	174	D7	CE
NUY60CAa	125B3110	U	6	F	220-240V/50Hz	RSIR	P	C	295	1.45	124	168	218	277	347	434	527			8.4	174	D4	CE
NUY60CAb	125B3112	U	6	F	220-240V/50Hz	RSCR	P	C	295	1.55	124	168	218	277	347	434	527			8.4	174	D5	CE
NUT60NAb	125B3311	U	6	S/F	220-240V/50Hz	RSCR	P	C	295	1.72	124	168	218	277	347	434	527	650	780	9.1	174	D5	CE
NUY60LAa	125B3103	U	6	F	220-240V/50Hz	CSIR	R	C-V	295	1.45	124	168	218	277	347	434	527			8.4	174	D6	CE
NUY60LAb	125B3113	U	6	F	220-240V/50Hz	CSR	R	C-V	295	1.55	124	168	218	277	347	434	527			8.4	174	D7	CE
NUY70CAa	125B3114	U	6.7	F	220-240V/50Hz	RSIR	P	C	325	1.45	135	178	233	300	376	467	565			8.6	174	D4	CE
NUY70CAb	125B3116	U	6.7	F	220-240V/50Hz	RSCR	P	C	325	1.55	135	178	233	300	376	467	565			8.6	174	D5	CE
NUT70CAb	125B3105	U	6.7	F	220-240V/50Hz	RSCR	P	C	325	1.76	135	178	233	300	376	467	565			9.2	174	D5	CE CCC VDE
NUY70LAa	125B3115	U	6.7	F	220-240V/50Hz	CSIR	R	C-V	325	1.45	135	178	233	300	376	467	565			8.6	174	D6	CE
NUY70LAb	125B3117	U	6.7	F	220-240V/50Hz	CSR	R	C-V	325	1.55	135	178	233	300	376	467	565			8.6	174	D7	CE
NUY80LAa	125B3118	U	8.1	F	220-240V/50Hz	CSIR	R	C-V	400	1.45	166	219	287	369	462	574	695			8.8	174	D6	CE
NUY80LAb	125B3119	U	8.1	F	220-240V/50Hz	CSR	R	C-V	400	1.55	167	219	287	369	462	574	695			8.8	174	D7	CE
NUY90LAa	125B3121	U	8.9	F	220-240V/50Hz	CSIR	R	C-V	440	1.48	168	241	316	406	508	631	765			9.2	174	D6	CE
NUT90LAb	125B3137	U	8.8	F	220-240V/50Hz	CSR	R	C-V	440	1.76	169	241	315	406	509	632	765	934	1113	9.2	176	D7	CE
NPY12LAb	125B3122	P	12.1	F	220-240V/50Hz	CSR	R	C-V	539	1.49	170	295	387	497	622	773	937			12.3	211	D2	CE CCC VDE
NPY14LAb	125B3123	P	14.32	F	220-240V/50Hz	CSR	R	C-V	650	1.48	171	357	468	601	753	935	1134			12.8	211	D2	CE CCC VDE
NPT16LA	125B3124	P	16.15	F	220-240V/50Hz	CSR	R	C-V	742	1.52	172	407	534	685	858	1065	1293			12.8	211	D2	CE CCC VDE

CONDITIONS

ASHRAE

LBP/LMBP	HMBP/HBP
----------	----------

Evaporating temperature °C	-23.2	7.2
Condensing temperature °C	55	55
Liquid temperature °C	32	46
Suction temperature °C	32	35
Ambient temperature °C	32	35

Danfoss Light Commercial Refrigeration Compressors

R290 LBP / LMBP 60Hz

MODEL	DANFOSS CODE (n)	PLATFORM	DISPLACEMENT cm ³	COOLING	VOLTAGE FREQUENCY	MOTOR	STARTING	EXPANSION	REFRIGERATION CAPACITY [W] at ASRAE conditions Evaporating Temperature °C											WEIGHT Kg	HEIGHT mm	DIAGRAM	CERTIFICATES
									ASHRAE		-40	-35	-30	-25	-20	-15	-10	-5	0				
									-23.3	W													
									COP														
NUC45NGa	125B3306	U	4.5	F	200-220V/50Hz 230V/60Hz	RSIR	P	C	245	1.45	97	131	173	223	281	349	423	506	598	8.5	174	D4	CE
NUC55NGa	125B3307	U	5.5	F	200-220V/50Hz 230V/60Hz	RSIR	P	C	305	1.45	122	166	218	281	355	440	534	639	755	8.6	174	D4	CE
NUC70NGa	125B3308	U	6.7	F	200-220V/50Hz 230V/60Hz	CSIR	R	C-V	380	1.45	156	206	269	347	439	545	665	824	946	8.8	174	D6	CE
NUM90LU	125B3138	U	9	F	220-240V/60Hz	CSR	R	C-V	510	1.55	212	279	366	471	590	733	887	1083	1290	9.1	176	D6	CE
NUY41NRa	125B3301	U	4.1	F	115-127V/60Hz	RSIR	P	C	210	1.42	93	121	155	199	250	305	376	463	560	8.8	174	D4	CE
NUY55NRa	125B3302	U	5.5	F	115-127V/60Hz	CSIR	R	C-V	315	1.55	125	163	208	267	336	409	504	621	751	9.1	174	D6	CE
NUY60NRa	125B3303	U	6	F	115-127V/60Hz	CSIR	R	C-V	350	1.55	137	178	227	292	366	447	550	678	820	9.3	176	D6	CE
NUY80NRb	125B3304	U	8.1	F	115-127V/60Hz	CSR	R	C-V	460	1.55	185	241	307	394	495	603	743	915	1108	9.3	176	D6	CE
NUY90NRb	125B3305	U	8.9	F	115-127V/60Hz	CSR	R	C-V	510	1.55	204	264	337	432	544	662	816	1005	1220	9.2	176	D6	CE
NUY45LRa	125B3125	U	4.5	F	115-127V/60Hz	CSIR	R	C-V	240	1.53	106	132	178	222	278	343	422			8.8	174	D6	CE
NUY60LRa	125B3126	U	6	F	115-127V/60Hz	CSIR	R	C-V	350	1.53	147	184	248	309	388	478	588			9.0	174	D6	CE
NUY70LRa	125B3127	U	6.7	F	115-127V/60Hz	CSIR	R	C-V	385	1.55	162	202	273	340	427	525	647			9.2	174	D6	CE
NUY80LRa	125B3128	U	8.1	F	115-127V/60Hz	CSIR	R	C-V	470	1.53	196	245	331	411	517	635	782			9.3	174	D6	CE
NUY90LRa	125B3129	U	8.9	F	115-127V/60Hz	CSIR	R	C-V	520	1.53	216	270	363	452	569	698	860			9.4	176	D6	CE
NUT55CRb	125B3130	U	5.5	F	115-127V/60Hz	RSCR	P	C	320	1.72	142	177	239	297	373	459	566			9.3	176	D5	CE UL
NUT60CRb	125B3131	U	6	F	115-127V/60Hz	RSCR	P	C	350	1.72	147	184	248	309	388	478	588			9.2	176	D5	CE UL
NUT70CRb	125B3132	U	6.7	F	115-127V/60Hz	RSCR	P	C	388	1.8	162	202	273	340	427	525	647			9.4	174	D5	CE UL
NUC45LCa	125B3139	U	4.5	F	100V /50/60Hz	CSIR	R	C-V	200	1.4	101	132	172	221	278	342	424			8.6	173	D6	CE
NUG80LCa	125B3140	U	8.1	F	100V /50/60Hz	CSIR	R	C-V	400	1.45	195	256	336	432	541	672	813			9.2	176	D6	CE

R290 HMBP 50Hz

MODEL	DANFOSS CODE (n)	PLATFORM	DISPLACEMENT cm ³	COOLING	VOLTAGE FREQUENCY	MOTOR	STARTING	EXPANSION	REFRIGERATION CAPACITY [W] at ASRAE conditions Evaporating Temperature °C										WEIGHT Kg	HEIGHT mm	DIAGRAM	CERTIFICATES
									ASHRAE		-25	-20	-15	-10	-5	0	5	10				
									-23.3	W												
									COP													
NUY45RAa	125B3501	U	4.5	F	220-240V/50Hz	CSIR	R	C-V	616	2.65	183	213	253	308	378	456	548	648	9.2	174	D6	CE CCC VDE
NUY55RAa	125B3502	U	5.5	F	220-240V/50Hz	CSIR	R	C-V	720	2.65	226	256	304	370	453	547	657	778	8.6	174	D6	CE CCC VDE
NUY60RAa	125B3503	U	6	F	220-240V/50Hz	CSIR	R	C-V	840	2.65	260	300	356	433	530	640	769	910	8.6	174	D6	CE CCC VDE
NUY70RAa	125B3504	U	6.7	F	220-240V/50Hz	CSIR	R	C-V	953	2.65	280	330	392	475	583	704	846	1000	8.8	174	D6	CE CCC VDE
NUY80RAa	125B3509	U	8.1	F	220-240V/50Hz	CSIR	R	C-V	1140	2.6	336	399	474	574	705	851	1023	1209	8.8	174	D6	CE CCC VDE
NUY90RAB	125B3510	U	8.9	F	220-240V/50Hz	CSR	R	C-V	1245	2.52	308	363	431	522	641	774	930	1099	9.2	174	D6	CE CCC VDE
NLY90RAa	125B3505	L	9.09	F	220-240V/50Hz	CSIR	R	C-V	1256	2.56	375	436	517	627	770	929	1117	1320	9.2	176	D1	CE CCC VDE
NLY90RGb	125B3511	L	9.1	F	220-240V/ 50Hz-60Hz	CSR	R	C-V	1256	2.68	337	423	529	657	805	974	1165	1376	12.3	211	D3	CE
NPY12RAB	125B3506	P	12.1	F	220-240V/50Hz	CSR	R	C-V	1744	2.7	439	553	701	884	1097	1340	1614	1919	12.8	211	D3	CE CCC VDE

R290 HMBP 60Hz

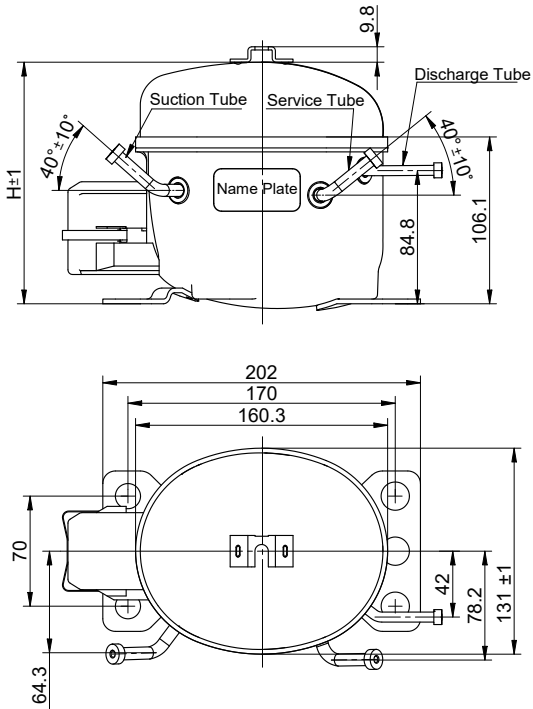
MODEL	DANFOSS CODE (n)	PLATFORM	DISPLACEMENT cm ³	COOLING	VOLTAGE FREQUENCY	MOTOR	STARTING	EXPANSION	REFRIGERATION CAPACITY [W] at ASRAE conditions Evaporating Temperature °C										WEIGHT Kg	HEIGHT mm	DIAGRAM	CERTIFICATES
									ASHRAE		-25	-20	-15	-10	-5	0	5	10				
									-23.3	W												
									COP													
NLY90RGb	125B3511	L	9.1	F	220-240V/ 50Hz-60Hz	CSR	R	C-V	1256	2.68	337	423	529	657	805	974	1165	1376	11.2	198	D3	CE
NLY80RRb	125B3507	L	8.1	F	115-127V/60Hz	CSR	R	C-V	1304	2.8	347	435	546	681	836	1013	1216	1434	11.1	198	D3	CE UL
NLY90RRb	125B3508	L	9.09	F	115-127V/60Hz	CSR	R	C-V	1470	2.76	391	490	615	767	942	1142	1370	1616	11.4	198	D3	CE UL

Technical Information

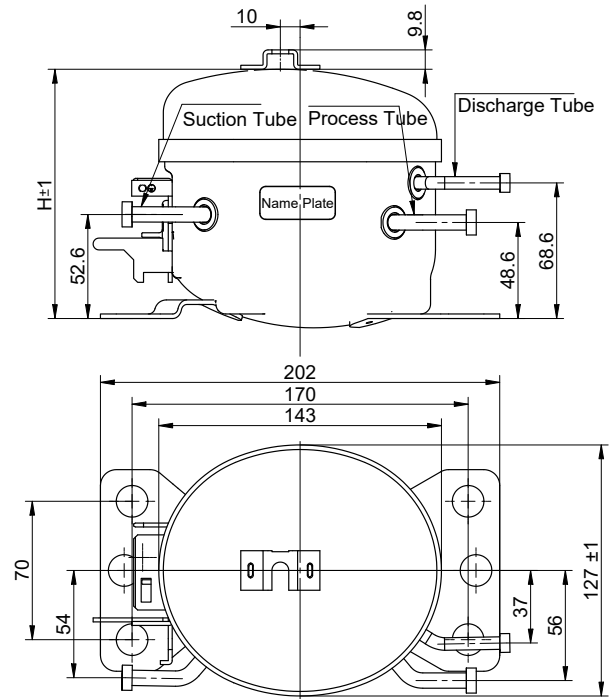


Compressor Dimensional Drawings

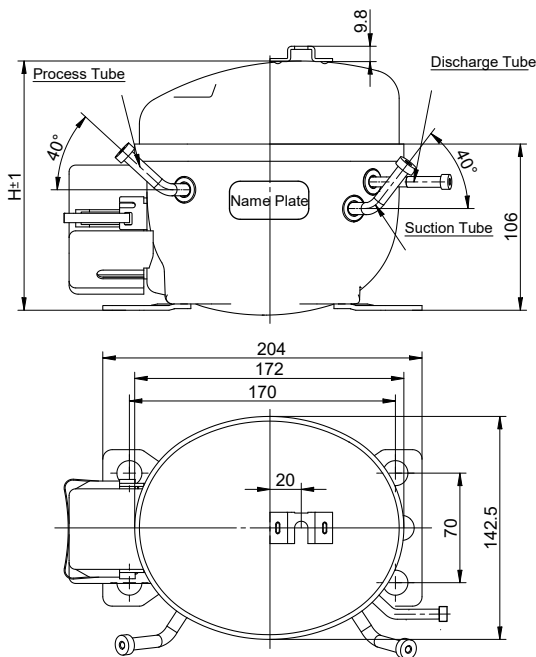
HB range



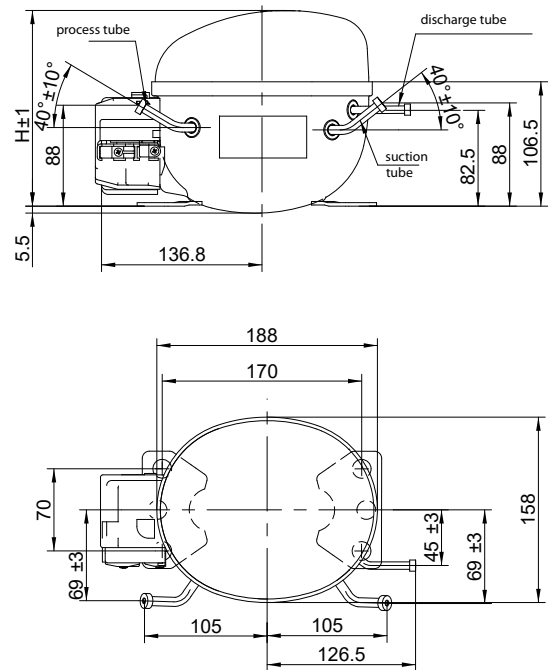
HBJ range



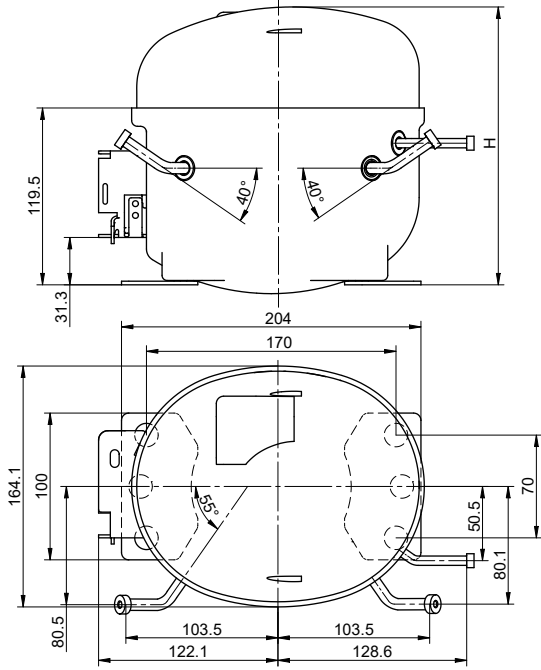
HS range



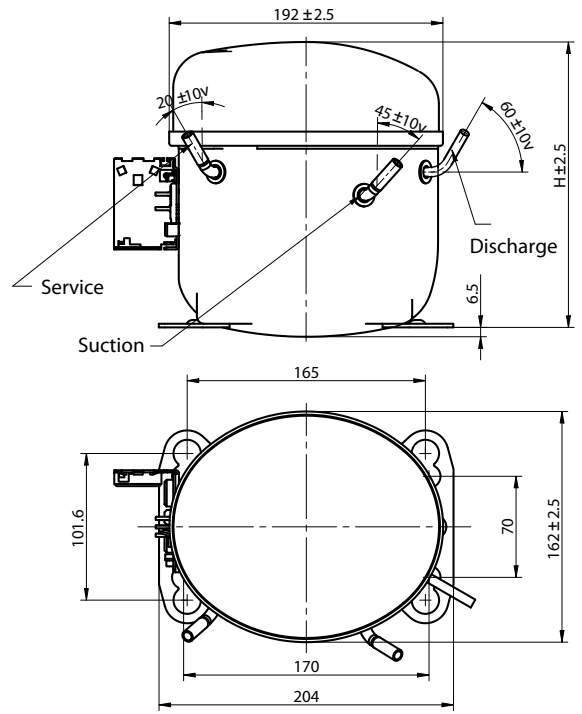
U range



H range



L-P range



Packaging

Industrial pack

Range	Qty / Level	N° Levels	Qty / Pallet	Pallet dimensions (mm)		
				Length	Width	Height
HJ	25	5	125	1135	8320	920
	25	6	150	1135	8320	1030
HB	21	5	105	1120	820	1060
HS	18	4	72	1120	820	900
U	18	4	72	1120	820	960
H	18	4	72	1120	820	1020
L, P	18	3	54	1120	820	810
	18	4	72	1120	820	1040

Single Pack

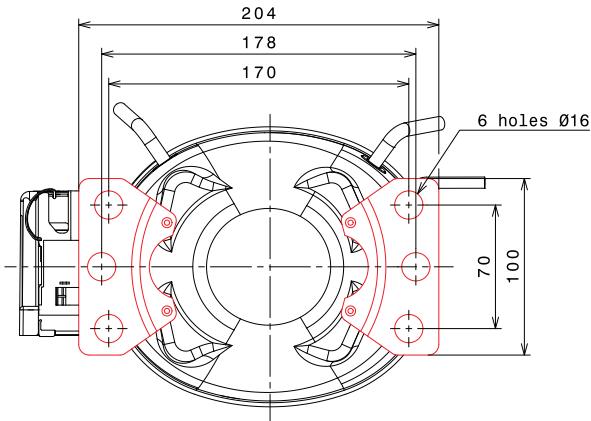
Range	Qty / Level	N° Levels	Qty / Pallet	Pallet dimensions (mm)		
				Length	Width	Height
HJ, HB, HS	18	4	72	950	960	900
	25	4	100	1270	960	900
U, H	12	4	60	950	960	890
	20	4	80	1270	960	1090
L, P	12	4	48	920	800	1104
	16	4	64	1220	800	1104

Fixings

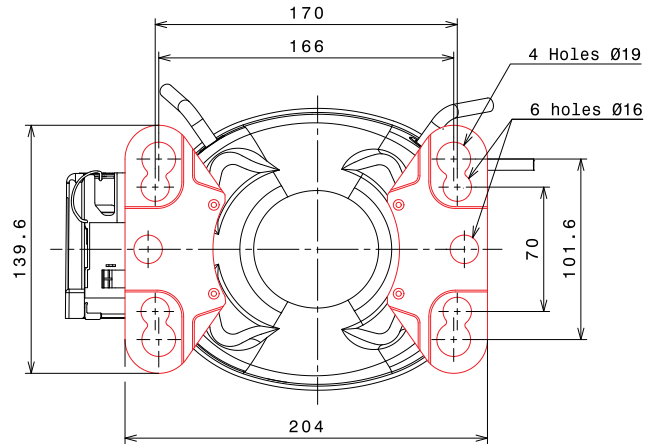
Fixings allow the manufacturer of appliances to fix the compressor to the appliance base, connecting it to the cooling system.

Mounting feet

European mounting feet



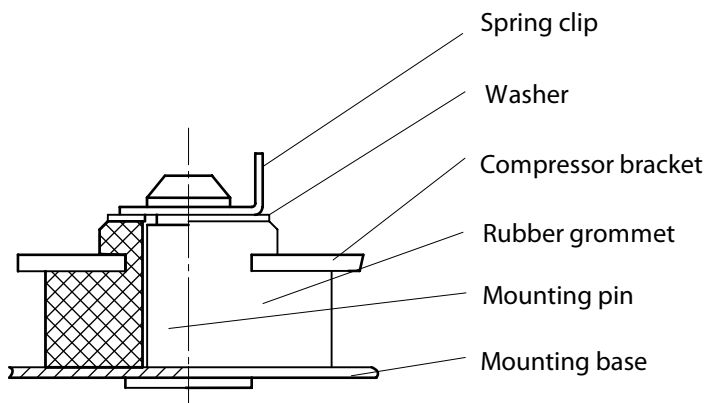
American mounting feet



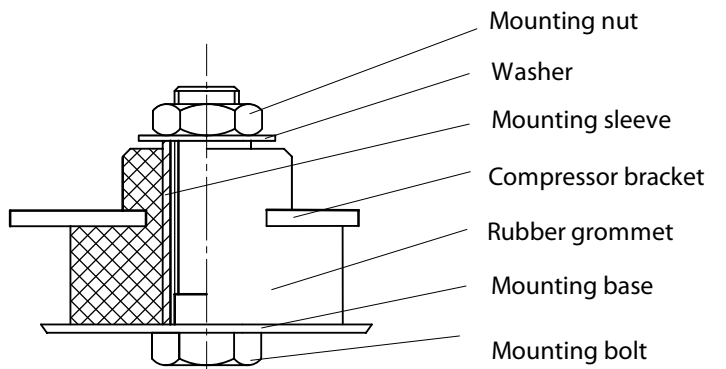
European mounting feet is a default configuration for standard catalogue models. American mounting feet can be supply on request.

Mounting accessories (Silent blocks)

SNAP-ON mounting



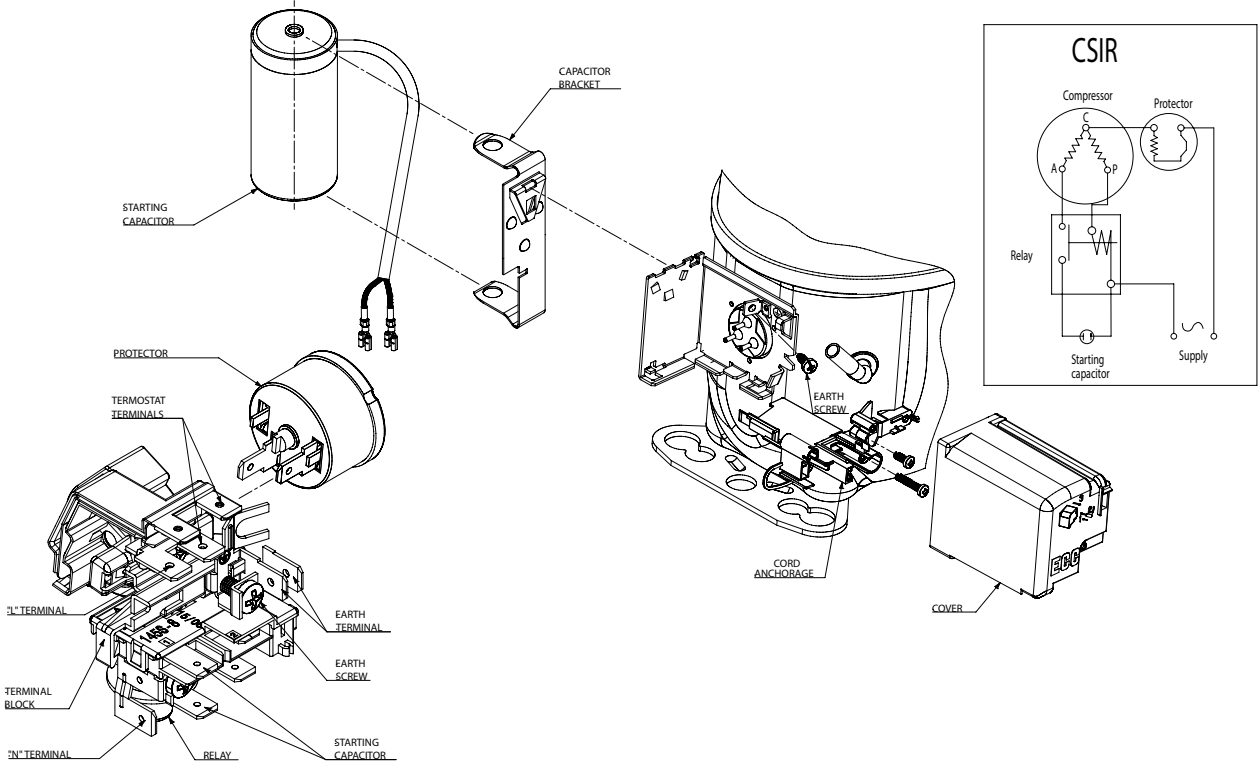
Standard mounting



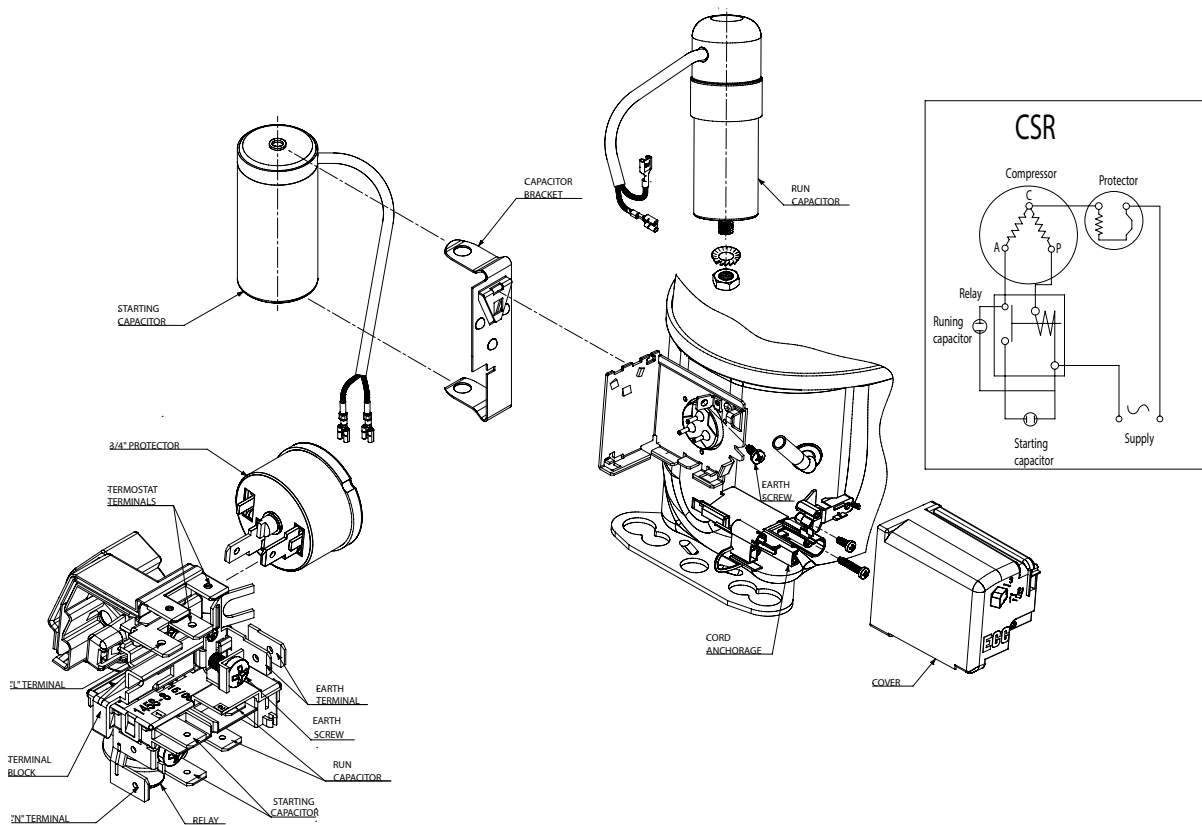
Standard mounting accessories are default configuration for standard catalogue models. SNAP -ON can be supply on request.

Wiring Diagrams and Electrical Assembly

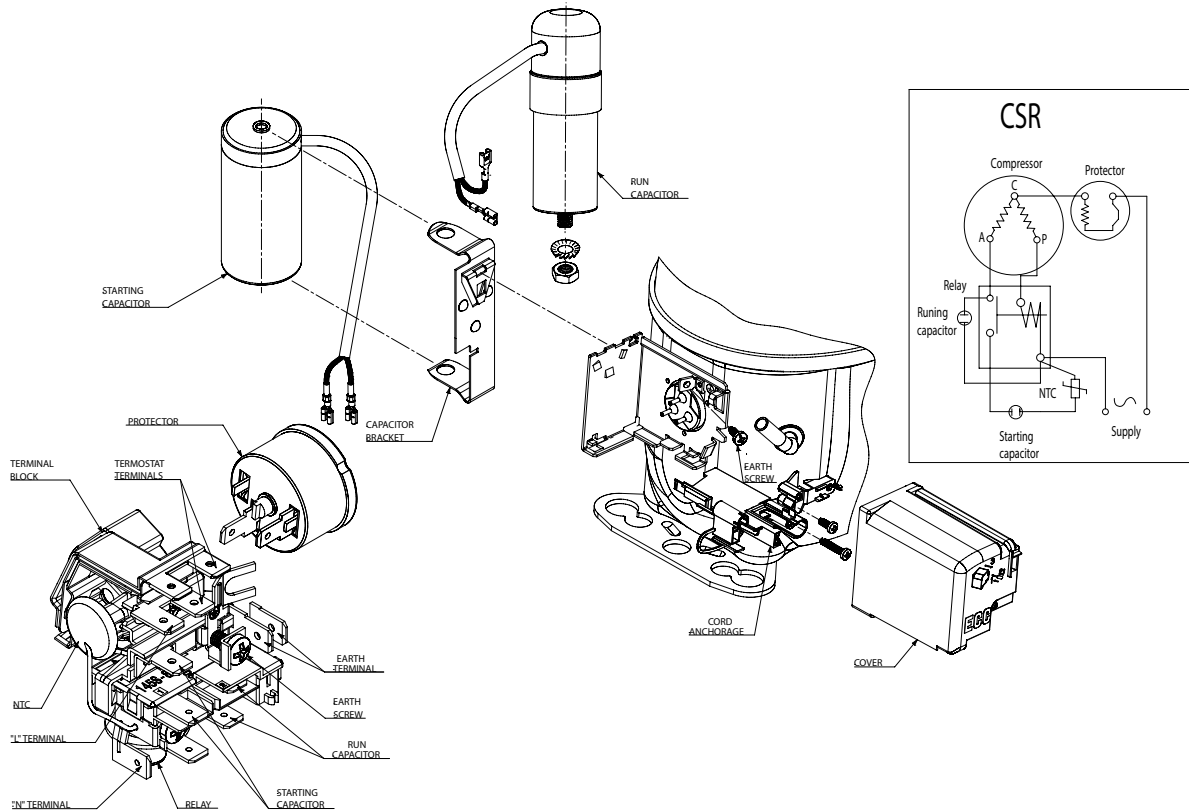
D1 – CSIR connection (HCB)



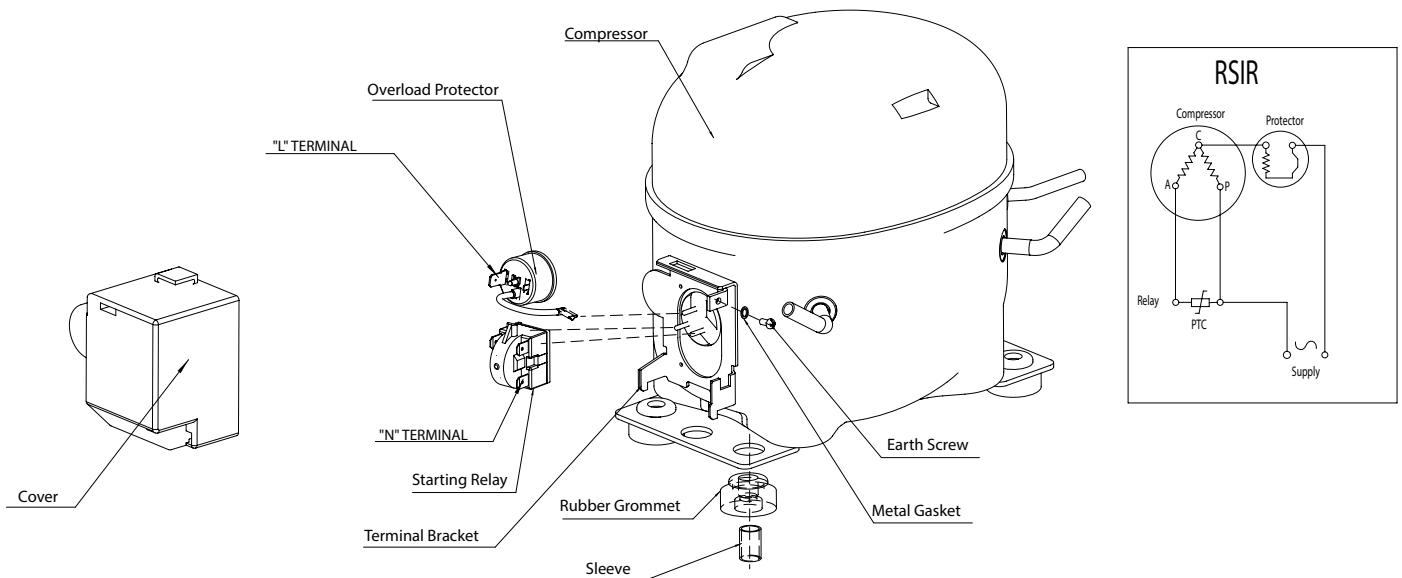
D2 – CSR connection (HCB)



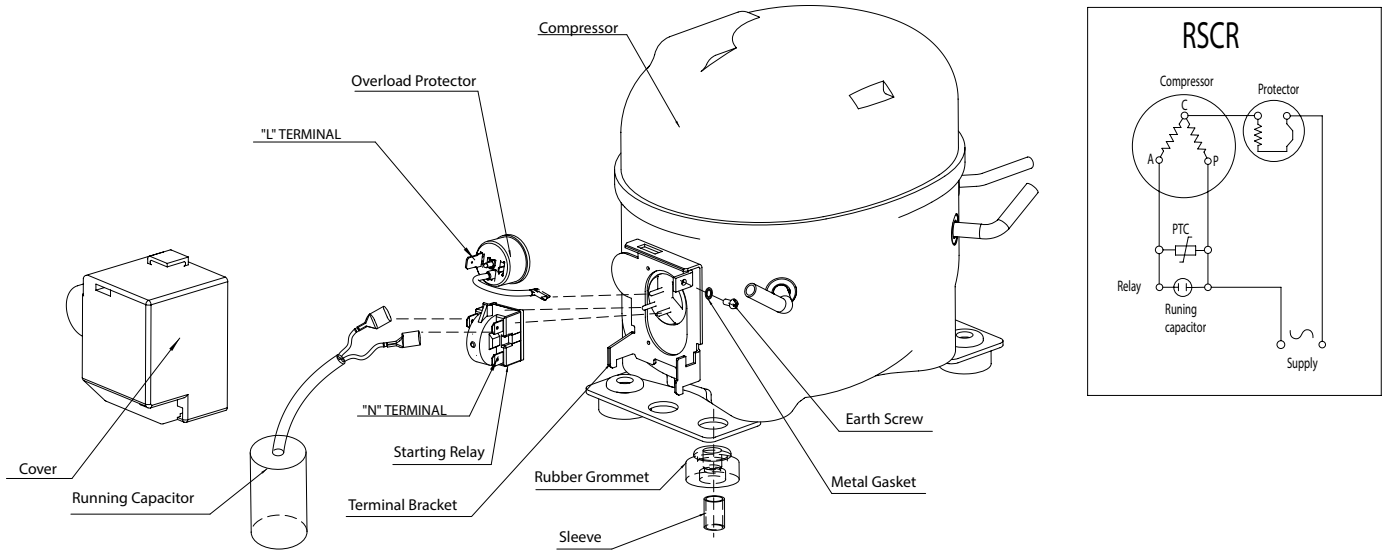
D3 – CSR +NTC connection (HCB). HCB connection CSR +NTC



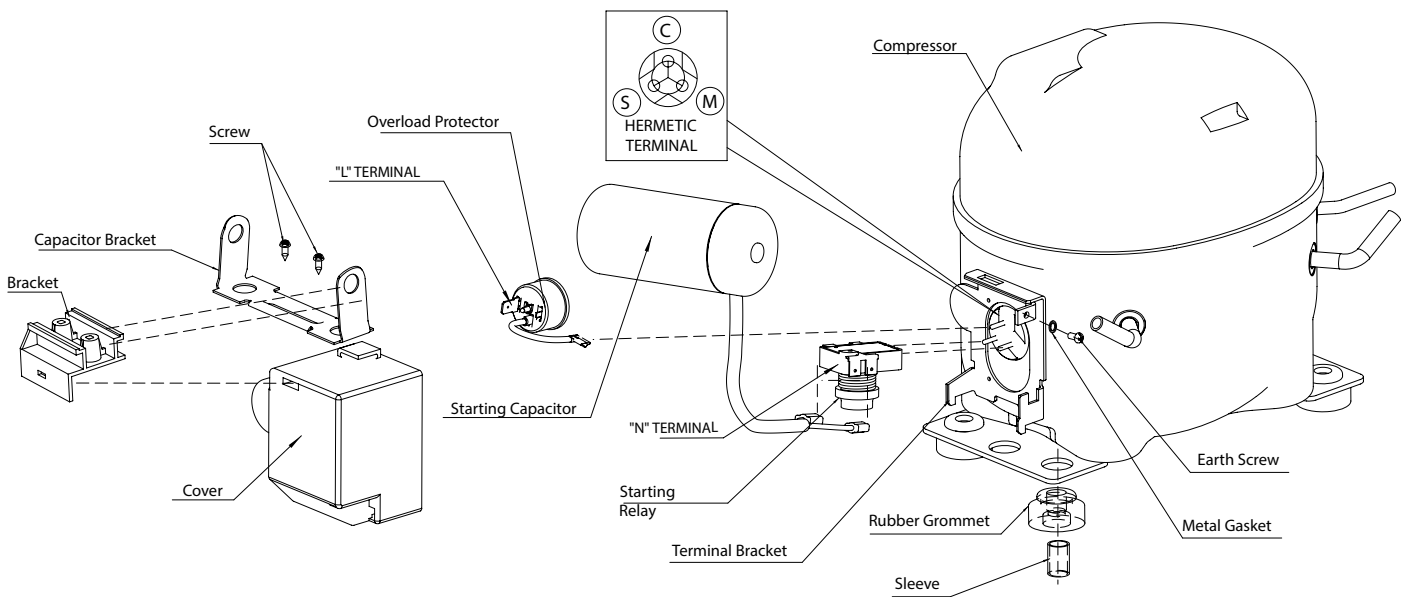
D4 – RSIR connection (C-type)



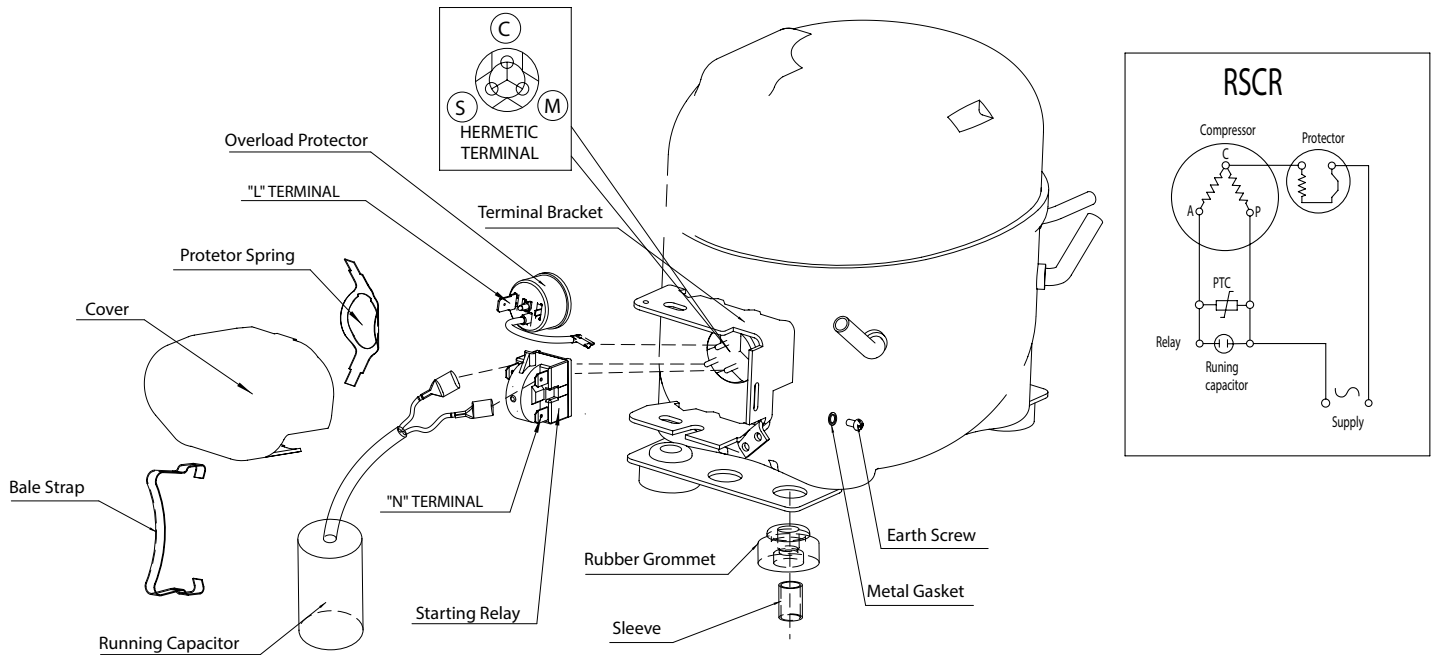
D5 – RSCR connection (C – type)



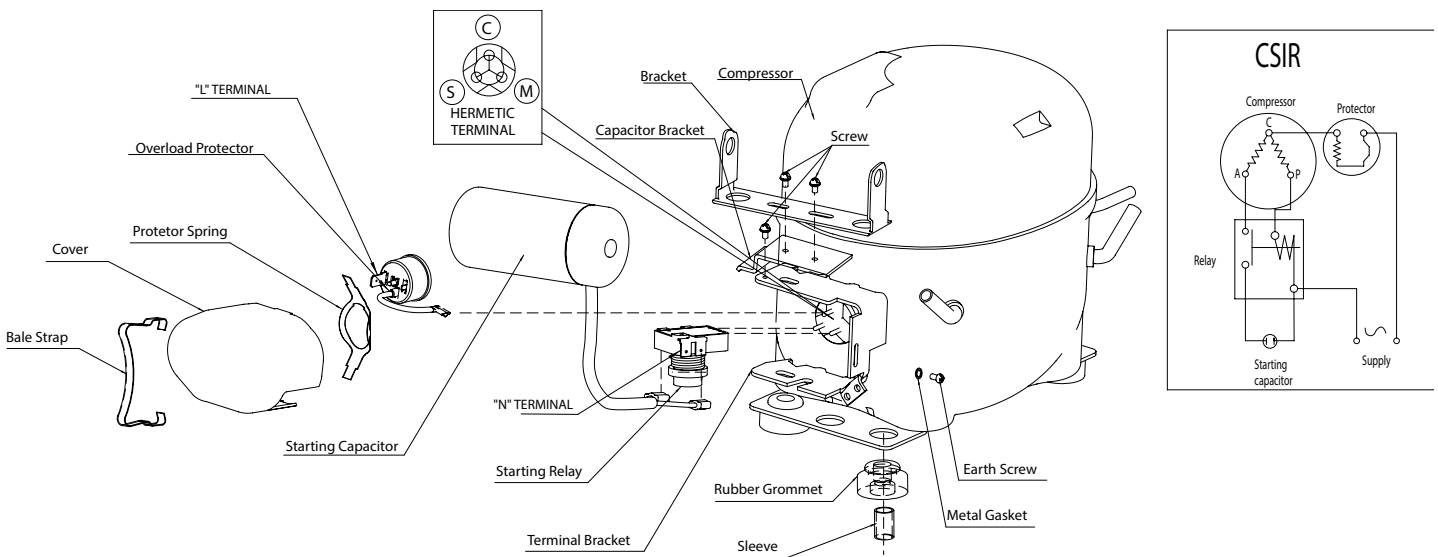
D6 – CSIR connection (C – type)



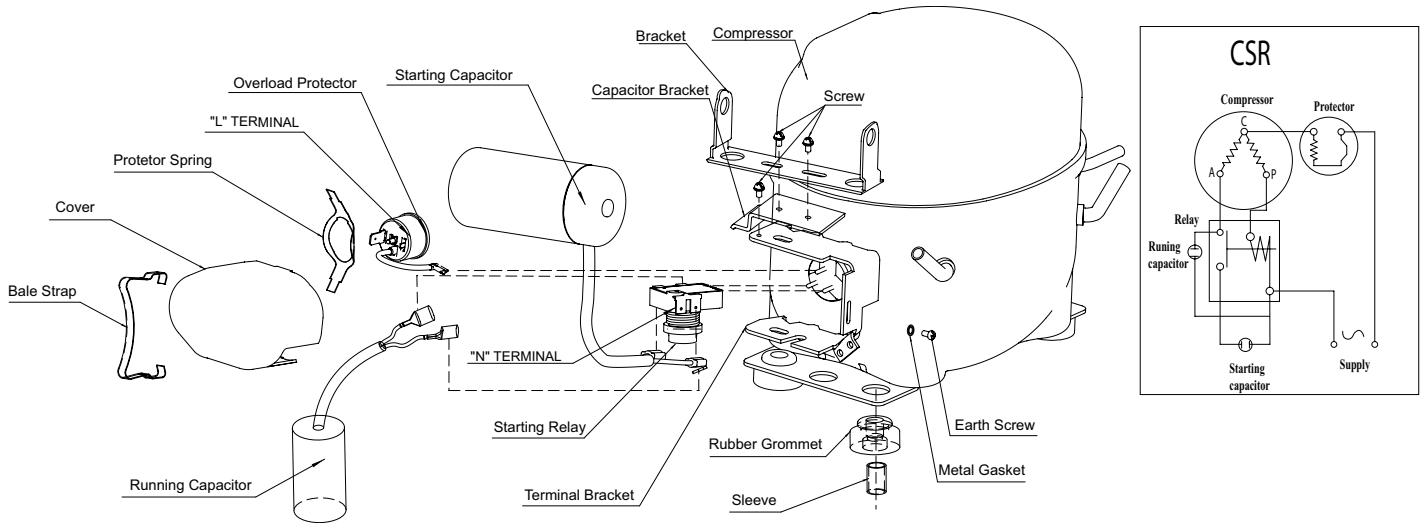
D10 - RSCR connection (II – type)



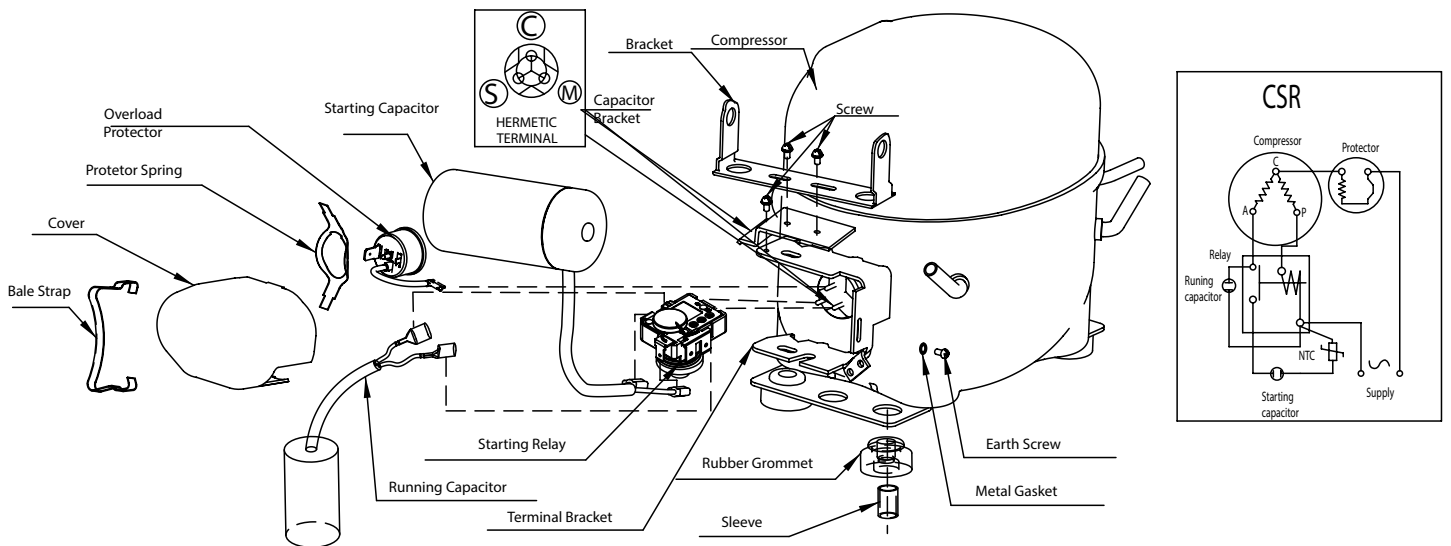
D11 - CSIR connection (II – type)



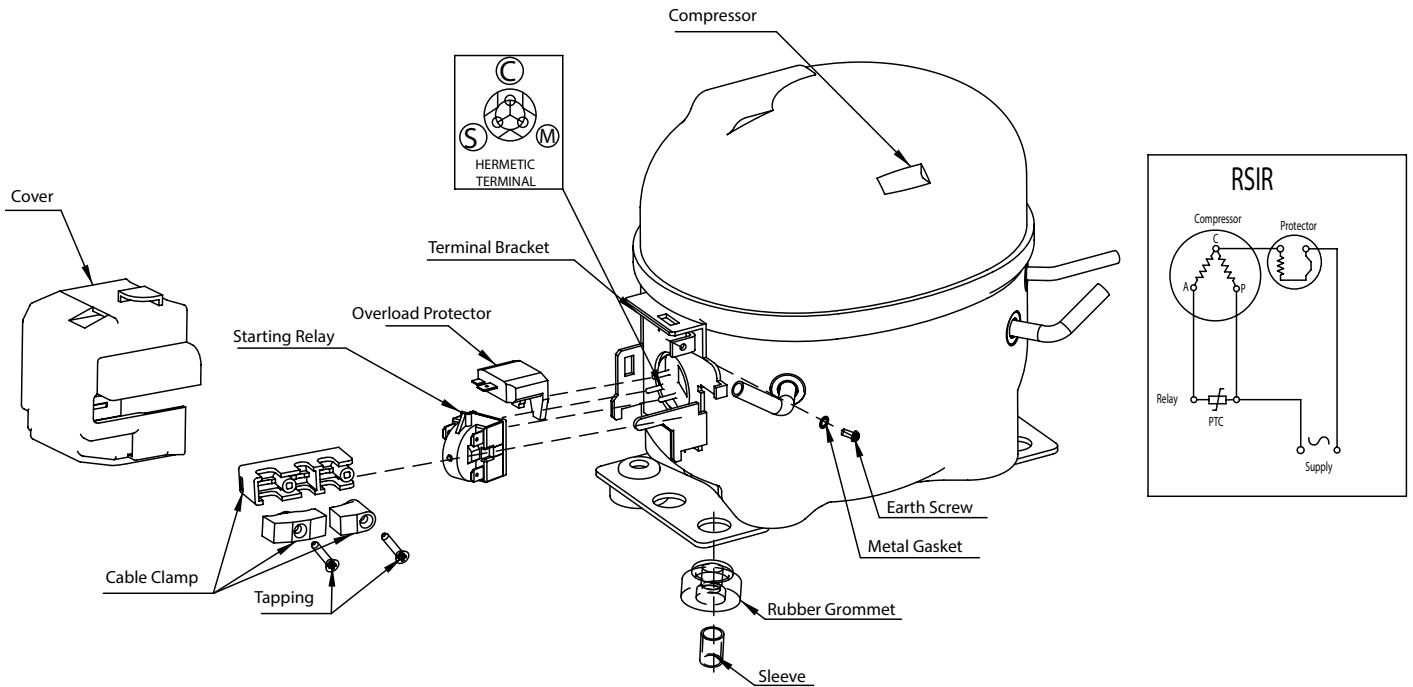
D12 - CSR connection (II - type)



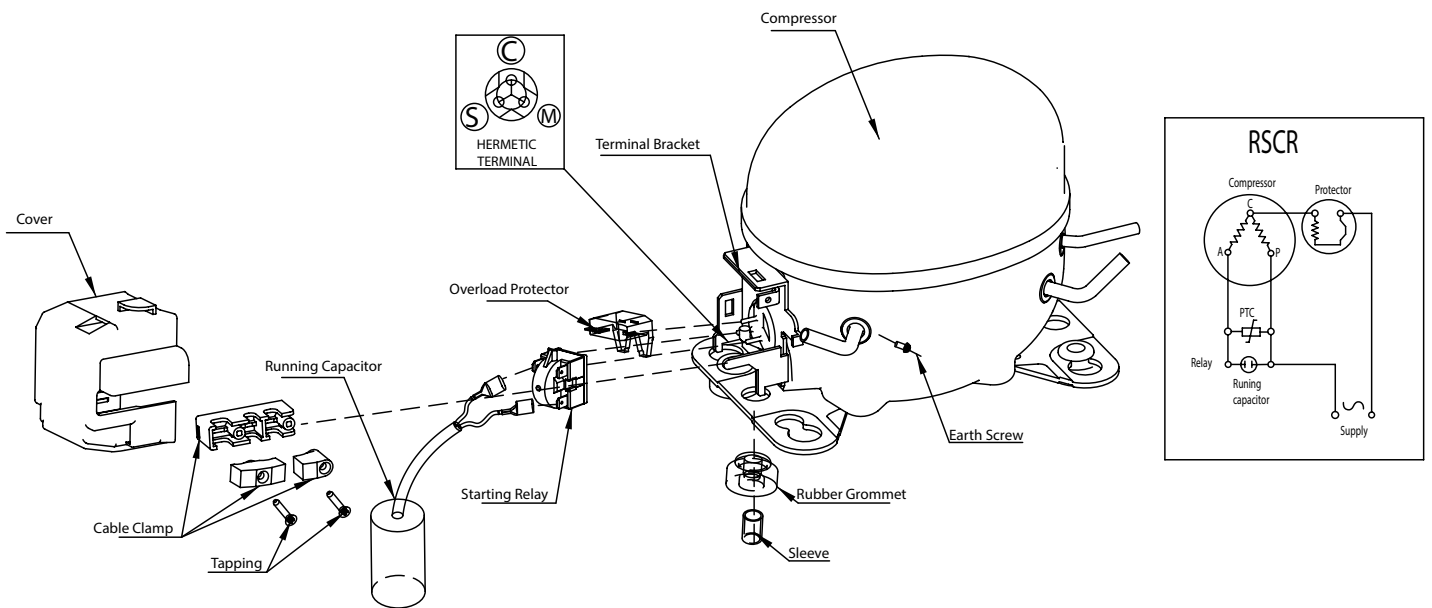
D13 - CSR connection +NTC (II - type)



D14 - RSIR connection (Combo type)



D15 - RSCR connection (Combo type)



Spare parts list

Model	Code	Voltage	Motor	Protector	Relay	Starting capacitor	Run capacitor
GU70AA	125F1111	220-240V/50Hz	RSIR	125B9403	125B9131		
GH90CA	125F1113	220-240V/50Hz	RSIR	125B9442	125B9131		
GH12FA	125F1114	220-240V/50Hz	CSIR	125B9413	125B9117	125B9302	
GH14FA	125F1115	220-240V/50Hz	CSIR	125B9413	125B9117	125B9302	
GH16FA	125F1116	220-240V/50Hz	CSIR	125B9411	125B9119	125B9302	
GE55AG	125F1117	220-240V/50-60Hz	RSIR	125B9402	125B9131		
GE60AG	125F1118	220-240V/50-60Hz	RSIR	125B9440	125B9131		
GE70CG	125F1119	220-240V/50-60Hz	RSIR	125B9403	125B9131		
GU80LG	125F1120	220-240V/50-60Hz	CSIR	125B9427	125B9113	125B9302	
GUY80AAb	125F1122	220-240V/50Hz	RSCR	125B9434	125B9131		125B9202
GH14FAb	125F1125	220-240V/50Hz	CSR	125B9427	125B9117	125B9302	125B9202
GH90LAb	125F1126	220-240V/50Hz	CSR	125B9426	125B9114	125B9302	125B9201
GB40AA	125F1127	220-240V/50Hz	RSIR	125B9438	125B9131		
GU60AA	125F1128	220-240V/50Hz	RSIR	125B9401	125B9131		
GU80CA	125F1129	220-240V/50Hz	RSIR	125B9443	125B9131		
GE80CA	125F1130	220-240V/50Hz	RSIR	125B9442	125B9131		
GH12FAb	125F1131	220-240V/50Hz	CSR	125B9427	125B9117	125B9302	125B9202
GB30AG	125F1139	220-240V/50-60Hz	RSIR	125B9435	125B9134		
GH12FE	125F1144	115V/60HZ	CSIR	125B9420	125B9105	125B9306	
GB40AZ	125F1146	220-240V/50Hz**	RSIR	125B9445	125B9139		
GS45AZ	125F1147	220-240V/50Hz**	RSIR	125B9446	125B9139		
GU60AZb	125F1148	220-240V/50Hz**	RSCR	125B9446	125B9139		125B9201
GUY60NR	125F1301	115-127V/60Hz	CSIR	125B913006**		125B9306	
GUY70NR	125F1302	115-127V/60Hz	CSIR	125B912906**		125B9305	
GUY80NR	125F1303	115-127V/60Hz	CSIR	125B912208**		125B9306	
GE70TB	125F1504	220-240V/50Hz	CSIR	125B9430	125B9113	125B9302	
GE80TB	125F1505	220-240V/50Hz	CSIR	125B9405	125B9113	125B9302	
GPY12RAa	125F1508	220-240V/50Hz	CSIR	125B912906**		125B9301	
GPY12RAb	125F1509	220-240V/50Hz	CSR	125B912931**		125B9301	125B9203
GPY14RAb	125F1511	220-240V/50Hz	CSR	125B912908**		125B9301	125B9208
GPY16RAb	125F1513	220-240V/50Hz	CSR	125B912209**		125B9301	125B9208
GU45TG	125F1514	200-230V/50Hz, 220-240V/60Hz	CSIR	125B912627**		125B9301	
GU45TG	125F1514	200-230V/50Hz, 220-240V/60Hz	CSIR	125B912627**		125B9301	
GP12TG	125F1515	200-220V/50Hz, 220-230V/60Hz	CSIR	125B912912**		125B9301	
GP14TG	125F1516	200-220V/50Hz, 220-230V/60Hz	CSIR	125B913016**		125B9302	
GU80TB	125F1522	220-240V/50Hz	CSIR	125B9448	125B9112	125B9302	
GU90TB	125F1709	220-240V/50Hz	CSIR	125B9404	125B9113	125B9302	
GH12TB	125F1710	220-240V/50Hz	CSIR	125B9411	125B9121	125B9302	
GH14TB	125F1711	220-240V/50Hz	CSIR	125B9414	125B9121	125B9302	
GH16TB	125F1712	220-240V/50Hz	CSIR	125B9417	125B9102	125B9302	
GPT18RA	125F1713	220-240V/50Hz	CSR	125B912209**		125B9301	125B9210
GU60TG	125F1714	200-230V/50Hz, 220-240V/60Hz	CSIR	125B912628**		125B9301	
GU60TG	125F1714	200-230V/50Hz, 220-240V/60Hz	CSIR	125B912628**		125B9301	
GE70TG	125F1715	220-240V/50Hz, 230V/60Hz	CSIR	125B9429	125B9113	125B9302	
GE80TG	125F1716	220-240V/50Hz, 230V/60Hz	CSIR	125B9430	125B9113	125B9302	
GP16TG	125F1717	200-220V/50Hz, 230V/60Hz	CSR	125B912208**		125B9303	125B9204
GPT16RG	125F1718	200-220V/50Hz, 220-230V/60Hz	CSR	125B912208**		125B9303	125B9209
GPY14Rmb	125F1723	115-127V/60Hz	CSR	125B9422	125B9125	125B9308	125B9211
MLY80LAa	125F2103	220-240V/50Hz	CSIR	125B9426	125B9127	125B9302	
MLY80LAb	125F2104	220-240V/50Hz	CSR	125B9426	125B9127	125B9302	125B9208
MLY90LAa	125F2105	220-240V/50Hz	CSIR	125B9406	125B9128	125B9301	
MP14FB	125F2107	220-240V/50Hz	CSIR	125B913010**		125B9303	
MPT12LA	125F2108	220-240V/50Hz	CSR	125B912931**		125B9303	125B9208
MPT14LA	125F2109	220-240V/50Hz	CSR	125B913008**		125B9302	125B9209
MPT16LA	125F2110	220-240V/50Hz	CSR	125B913009**		125B9302	125B9210
MLT90LD	125F2111	115V/60Hz	CSR	125B9418	125B9123	125B9307	125B9207
MP12FG	125F2113	200-220V/50Hz, 220-230V/60Hz	CSIR	125B913006**		125B9302	
MP14FG	125F2114	200-220V/50Hz, 230V/60Hz	CSIR	125B912216**		125B9303	
MPT12LD	125F2116	115V/60Hz	CSR	125B9421	125B9124	125B9308	125B9207

** - protector provided together with relay

Danfoss Light Commercial Refrigeration Compressors

Model	Code	Voltage	Motor	Protector	Relay	Starting capacitor	Run capacitor
MPT18LA	125F2117	220-240V/50Hz	CSR	125B912212**		125B9303	125B9209
ML80TG	125F2501	200-240V/50Hz, 230V/60Hz	CSIR	125B912910**		125B9301	
ML90TG	125F2502	200-220V/50Hz, 230V/60Hz	CSIR	125B913016**		125B9301	
MP12RB	125F2503	220-240V/50Hz	CSR	125B913009**		125B9301	125B9210
MP14RB	125F2504	220-240V/50Hz	CSR	125B912216**		125B9301	125B9210
NUY45LAa	125F3101	220-240V/50Hz	CSIR	125B9424	125B9107	125B9301	
NUY60LAa	125F3103	220-240V/50Hz	CSIR	125B9425	125B9110	125B9302	
NUT70CAb	125F3105	220-240V/50Hz	RSCR	125B9425	125B9132		125B9203
NUY55CAa	125F3106	220-240V/50Hz	RSIR	125B9424	125B9107		
NUY55LAa	125F3107	220-240V/50Hz	CSIR	125B9424	125B9107	125B9302	
NUY55CAb	125F3108	220-240V/50Hz	RSCR	125B9424	125B9107		125B9202
NUY55LAb	125F3109	220-240V/50Hz	CSR	125B9424	125B9108	125B9302	125B9202
NUY60CAa	125F3110	220-240V/50Hz	RSIR	125B9425	125B9110		
NUY60CAb	125F3112	220-240V/50Hz	RSCR	125B9425	125B9110		125B9203
NUY60LAb	125F3113	220-240V/50Hz	CSR	125B9425	125B9111	125B9302	125B9203
NUY70CAa	125F3114	220-240V/50Hz	RSIR	125B9426	125B9110		
NUY70LAa	125F3115	220-240V/50Hz	CSIR	125B9426	125B9110	125B9302	
NUY70CAb	125F3116	220-240V/50Hz	RSCR	125B9426	125B9110		125B9203
NUY70LAb	125F3117	220-240V/50Hz	CSR	125B9426	125B9111	125B9302	125B9203
NUY80LAa	125F3118	220-240V/50Hz	CSIR	125B9427	125B9114	125B9302	
NUY80LAb	125F3119	220-240V/50Hz	CSR	125B9427	125B9114	125B9302	125B9202
NUY90LAa	125F3121	220-240V/50Hz	CSIR	125B9427	125B9113	125B9302	
NPY12LAb	125F3122	220-240V/50Hz	CSR	125B912931**		125B9302	125B9208
NPY14LAb	125F3123	220-240V/50Hz	CSR	125B913008**		125B9302	125B9208
NPT16LA	125F3124	220-240V/50Hz	CSR	125B913008**		125B9302	125B9210
NUY45LRa	125F3125	115-127V/60Hz	CSIR	125B9428	125B9113	125B9304	
NUY60LRa	125F3126	115-127V/60Hz	CSIR	125B9406	125B9119	125B9304	
NUY70LRa	125F3127	115-127V/60Hz	CSIR	125B9415	125B9102	125B9305	
NUY80LRa	125F3128	115-127V/60Hz	CSIR	125B9415	125B9102	125B9306	
NUY90LRa	125F3129	115-127V/60Hz	CSIR	125B9416	125B9103	125B9306	
NUT55CRb	125F3130	115-127V/60Hz	RSCR	125B9404	125B9135		125B9207
NUT60CRb	125F3131	115-127V/60Hz	RSCR	125B9406	125B9135		125B9207
NUT70CRb	125F3132	115-127V/60Hz	RSCR	125B9415	125B9138		125B9207
NSG45CAb	125F3133	220-240V/50Hz	RSCR	125B9444	125B9139		125B9201
NUT90LAb	125F3137	220-240V/50Hz	CSR	125B9426	125B9114	125B9302	125B9202
NUM90LU	125F3138	220-240V/60Hz	CSR	125B9427	125B9118	125B9302	125B9203
NUC45LCa	125F3139	100V 50/60Hz	CSIR	125B9404	125B9119	125B9304	
NUG80LCa	125F3140	100V 50/60Hz	CSIR	125B9416	125B9105	125B9306	
NUY41NRa	125F3301	115-127V/60Hz	RSIR	125B9404	125B9136		
NUY55NRa	125F3302	115-127V/60Hz	CSIR	125B9408	125B9104	125B9304	
NUY60NRa	125F3303	115-127V/60Hz	CSIR	125B9412	125B9104	125B9304	
NUY80NRb	125F3304	115-127V/60Hz	CSR	125B9420	125B9106	125B9306	125B9207
NUY90NRb	125F3305	115-127V/60Hz	CSR	125B9420	125B9106	125B9306	125B9207
NUC45NGa	125F3306	200-220V/50Hz, 230V/60Hz	RSIR	125B9425	125B9131		
NUC55NGa	125F3307	200-220V/50Hz, 230V/60Hz	RSIR	125B9425	125B9131		
NUC70NGa	125F3308	200-220V/50Hz, 230V/60Hz	CSIR	125B9427	125B9116	125B9302	
NUT40NAb	125F3309	220-240V/50Hz	RSCR	125B9424	125B9131		125B9202
NUT55NAb	125F3310	220-240V/50Hz	RSCR	125B9424	125B9131		125B9202
NUT60NAb	125F3311	220-240V/50Hz	RSCR	125B9425	125B9131		125B9203
NUY45RAa	125F3501	220-240V/50Hz	CSIR	125B9426	125B9110	125B9301	
NUY55RAa	125F3502	220-240V/50Hz	CSIR	125B9428	125B9110	125B9301	
NUY60RAa	125F3503	220-240V/50Hz	CSIR	125B9428	125B9113	125B9302	
NUY70RAa	125F3504	220-240V/50Hz	CSIR	125B9431	125B9116	125B9302	
NLY90RAa	125F3505	220-240V/50Hz	CSIR	125B912909**		125B9302	
NPY12RAb	125F3506	220-240V/50Hz	CSR	125B9409	125B9120	125B9302	125B9208
NLY80RRb	125F3507	115-127V/60Hz	CSR	125B9419	125B9123	125B9307	125B9207
NLY90RRb	125F3508	115-127V/60Hz	CSR	125B9422	125B9123	125B9306	125B9207
NUY80RAa	125F3509	220-240V/50Hz	CSIR	125B9406	125B9116	125B9302	
NUY90RAb	125F3510	220-240V/50Hz	CSR	125B9404	125B9118	125B9302	125B9208
NLY90RGb	125F3511	220-240V, 50Hz/60Hz	CSR	125B913009**		125B9302	125B9203

** - protector provided together with relay

Danfoss Cooling

is a worldwide manufacturer of compressors and condensing units for refrigeration and HVAC applications. With a wide range of high quality and innovative products we help your company to find the best possible energy efficient solution that respects the environment and reduces total life cycle costs.

We have 40 years of experience within the development of hermetic compressors which has brought us amongst the global leaders in our business, and positioned us as distinct variable speed technology specialists. Today we operate from engineering and manufacturing facilities spanning across three continents.



Our products can be found in a variety of applications such as rooftops, chillers, residential air conditioners, heatpumps, coldrooms, supermarkets, milk tank cooling and industrial cooling processes.

www.danfoss.com

Danfoss, BP 331, 01603 Trévoux Cedex, France | +334 74 00 28 29



Danfoss can accept no responsibility for possible errors in catalogues, brochures and other printed material. Danfoss reserves the right to alter its products without notice. This also applies to products already on order provided that such alterations can be made without subsequential changes being necessary in specifications already agreed. All trademarks in this material are property of the respective companies. Danfoss and the Danfoss logotype are trademarks of Danfoss A/S. All rights reserved.