

General Data Sheet

# Oil Nozzles Type LE

For specific information on this product, please contact Danfoss Burner Components

## Identification

The nozzle is marked with the following information:



2.37	Specified capacity (kg/h)
Specification point	1160 kPa (11.6 bar), 3.4 cSt., 840 kg/m <sup>3</sup> [10 bar + 1.6 bar = 11.6 bar] Capacity tolerance: ± 6%
LE	Type (Low Emission)
	Serial number for internal use
0.60	Reference capacity (USgal/h)
Reference specification point	860 kPa (8.6 bar), 3.4 cSt., 820 kg/m <sup>3</sup> [7.0 bar + 1.6 bar = 8.6 bar]
60° S	Spray angle & pattern (S = Solid) (H = Hollow)

Oil nozzles type LE are special versions of standard nozzles type OD with built-in cut-off valve. In combination with an oil pump with LE-function (e.g. BFP 21 LE) the LE nozzle prevents drop formation when preheating and from oil expansion in the nozzle line at burner stop. Alternatively the LE-function can be obtained by using a preheater with incorporated LE-valve (FPHB-LE) in combination with an OD-nozzle.

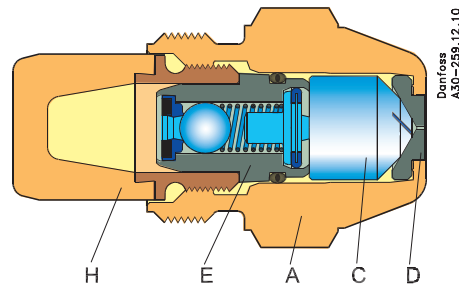
LE nozzles are available with 3 spray angles, 2 spray patterns and capacities from 0.40 to 2.0 USgal/h. The nozzles are equipped with sintered bronze filter.

## Application and Features

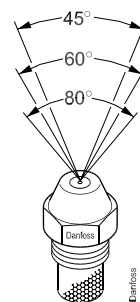
- Light oil
- Low Emission
- 100% test of capacity and performance

## Design

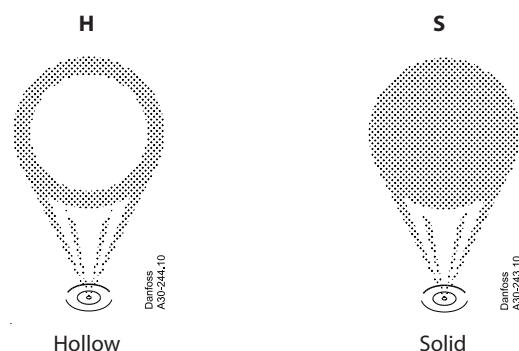
- A Nozzle housing
- C Nozzle cone
- D Orifice disc
- E LE-valve
- H Filter



## Spray angles



## Spray patterns

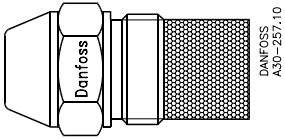


General Data Sheet

Oil Nozzles Type LE

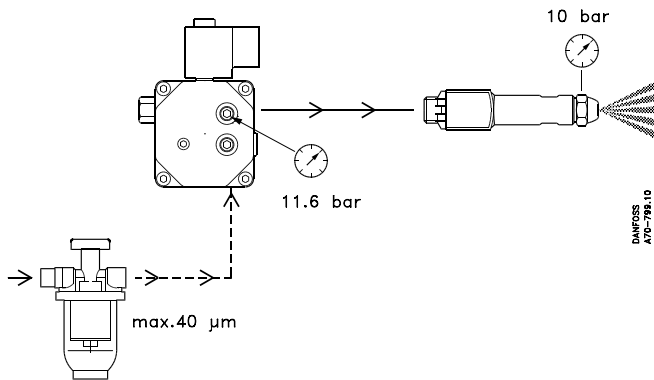
Technical Data

Filters



Capacity 0.40-2.0 USgal/h:  
30 µm sintered bronze

Note! The LE-function must be protected by an effective pre-filter  
(max. 40 µm)



Oil Nozzles Type LE

The capacity and spray pattern is precisely the same as on an OD nozzle. I.e. an 0.5 USgal/h, 60°S LE-nozzle is identical to an 0.5 USgal/h, 60°S OD-nozzle. The difference is that the pressure on the pump must be increased by 1.6 bar in order to get the same capacity from an LE as from an OD.

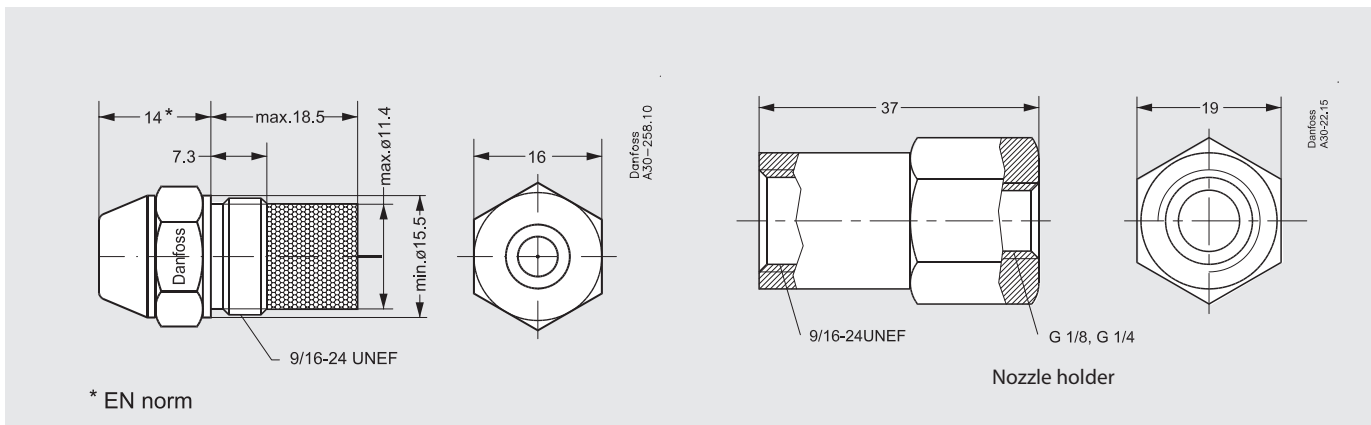
Reference capacity USgal/h	Spray angles / patterns			Specified capacity kg/h
	45°	60°	80°	
0.40 *	S	H S	H S	1.46
0.45 *	S	H S	H S	1.66
0.50	H S	H S	H S	1.87
0.55	H S	H S	H S	2.11
0.60	H S	H S	H S	2.37
0.65	H S	H S	H S	2.67
0.75	H S	H S	H S	2.94
0.85	H S	H S	H S	3.31
1.00	H S	H S	H S	3.72
1.10	H S	H S	H S	4.24
1.20	H S	H S	H S	4.45
1.25	H S	H S	H S	4.71
1.35	H S	H S	H S	5.17
1.50	H S	H S	H S	5.84
1.65	H S	H S	H S	6.08
1.75	H S	H S	H S	6.55
2.00	H S	H S	H S	7.42

\* This nozzle capacity should not be used for oil with viscosities lower than 1.6 cSt.

Tightening torques

Recommended tightening torque	15 to 20 Nm (1.5 to 2.0 kpm)
Max. tightening torque	25 Nm (2.5 kpm)

Dimensions



\* EN norm

Additional documentation on burner components is available on <http://heating.danfoss.com/> or <https://store.danfoss.com/>

Danfoss A/S

Heating Segment • [heating.danfoss.com](http://heating.danfoss.com) • +45 7488 2222 • E-Mail: [heating@danfoss.com](mailto:heating@danfoss.com)

Danfoss can accept no responsibility for possible errors in catalogues, brochures and other printed material. Danfoss reserves the right to alter its products without notice. This also applies to products already on order provided that such alterations can be made without consequential changes being necessary in specifications already agreed. All trademarks in this material are property of the respective companies. Danfoss and all Danfoss logotypes are trademarks of Danfoss A/S. All rights reserved.