

Data Sheet

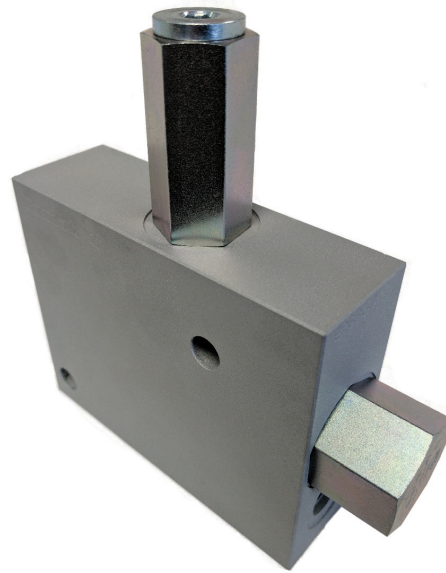
Loop Flushing Block

LFB12

The Loop Flushing Block is designed to help sustain high quality working fluid in a hydraulic transmission circuit. By allowing oil to drain from the power transmission loop to other oil treatment components, the LFB12 assists in the process of removing contamination and cooling oil.

Ports A and B are connected to the work ports of the main transmission circuit. Port DR is connected to the transmission case drain return line. Ideally, the return line would flush through the motor case before returning to the reservoir.

The low pressure side of the circuit is sent to the relief valve, which is then drained out of the transmission loop. The amount of flow drained from the loop can be determined by adjusting the relief valve setting and installing an optional orifice. With a wide range of relief valve settings and orifice sizes, the LFB12 can be fine-tuned to match the machine's optimal drain rate.

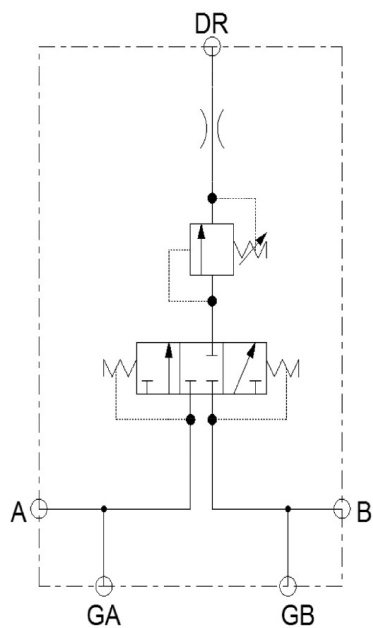
**Features**

- Max pressure: 350 bar [5075 psi]
- Rated flow: see performance chart
- Provides loop flushing capabilities at various flows for a wide range of applications
- Optimal flow design
- Low pressure differential
- Steel body for high pressure applications
- Simple design for ease of serviceability
- Compact profile for minimal space requirements
- Overall size: 156.7 mm x 150 mm x 40 mm
- Open and closed center spools

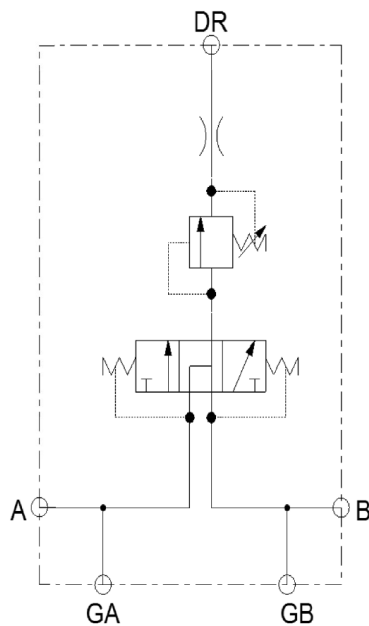
Comprehensive technical literature is
online at www.danfoss.com

Schematics

Closed center spool option

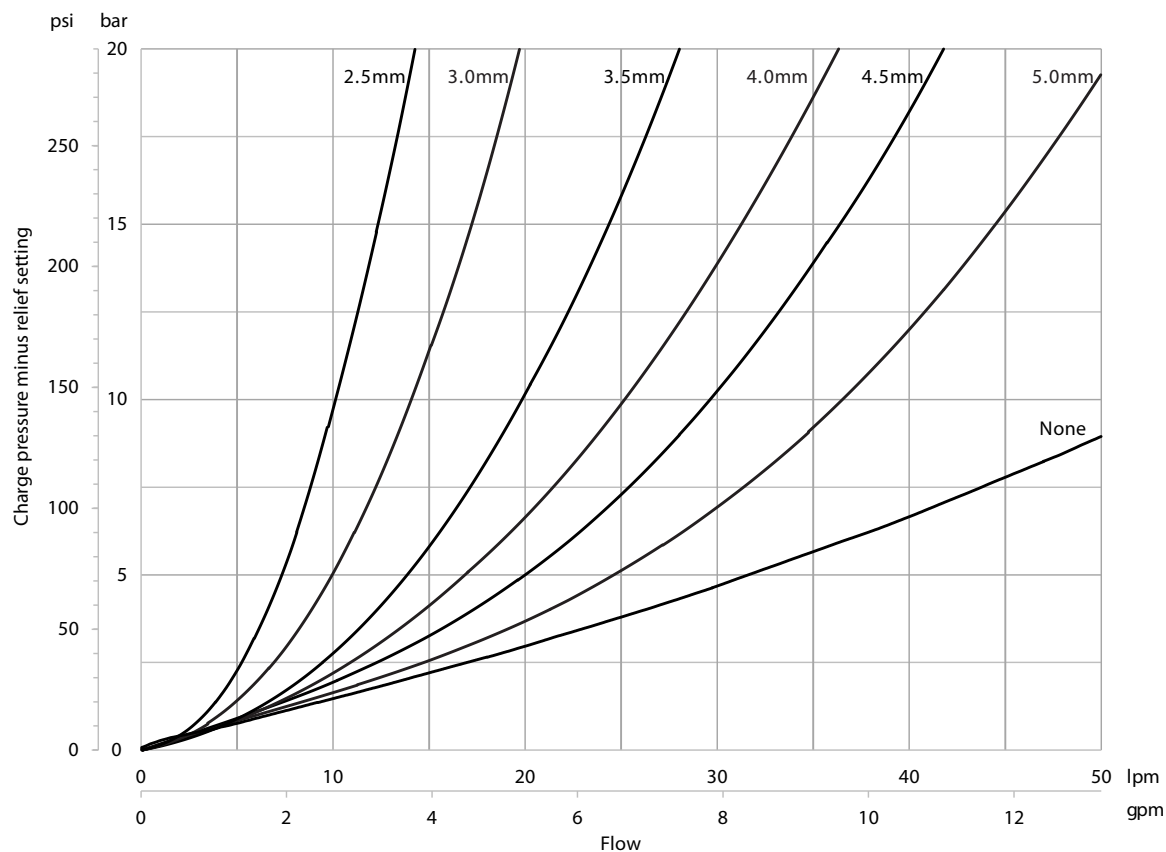


Open center spool option



Performance

Pressure rise per orifice option



Ordering information

Nomenclature (separated by section)

| | A | B | C | D | E |
|-------|-----|------|-------|-----|-------|
| LFB12 | - C | - 17 | - 3.0 | - B | - S8S |

A – Spool Center

| Code | Description |
|------|-------------|
| C | Closed |
| O | Open |

B – Relief Setting

| Code | Description |
|------|------------------|
| 7 | 7 bar [100 psi] |
| 10 | 10 bar [150 psi] |
| 14 | 14 bar [200 psi] |
| 17 | 17 bar [250 psi] |
| 21 | 21 bar [300 psi] |
| 24 | 23 bar [350 psi] |
| 28 | 28 bar [400 psi] |

C – Orifice Option

| Code | Description |
|------|-------------|
| 00 | None |
| 2.5 | Ø 2.5 mm |
| 3.0 | Ø 3.0 mm |
| 3.5 | Ø 3.5 mm |
| 4.0 | Ø 4.0 mm |
| 4.5 | Ø 4.5 mm |
| 5.0 | Ø 5.0 mm |

D – Seal Material

| Code | Description |
|------|-------------|
| B | Buna |
| V | Viton |

E – Port Sizes

| Code | Description |
|------|--------------------|
| S8S | 8S SAE [A, B & DR] |
| | 6S SAE [GA & GB] |
| S4B | ½ BSP [A, B & DR] |
| | ¼ BSP [GA & GB] |