



Sequence Valves Technical Information

Unloading Valve, Differential Area, Pilot Operated

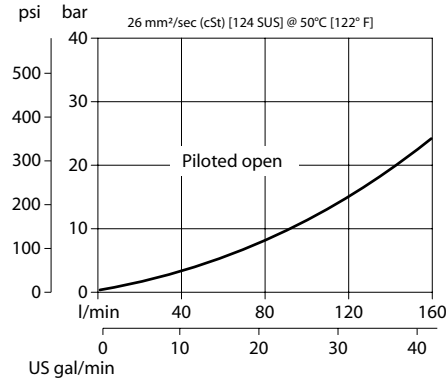
VDB 12-EN

OPERATION

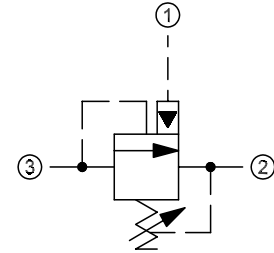
This is a pilot-operated unloading valve.

SPECIFICATIONS

Theoretical performance



Schematic



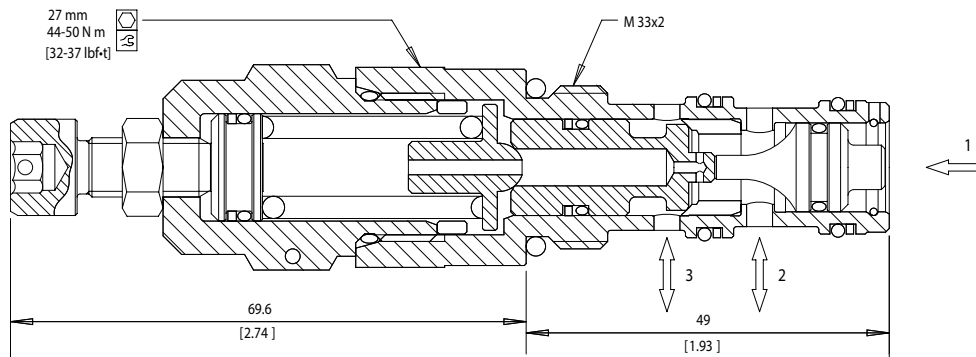
Specifications

Rated pressure	350 bar [5075 psi]
Rated flow	160 l/min [42 US gal/min]
Weight	0.70 kg [1.54 lb]
Cavity	NCS12/3

DIMENSIONS

mm [in]

Cross-sectional view



ORDERING INFORMATION

VDB 12-EN - 2 - A - 00 - V

Setting range		Seals	Seal kit
Pilot ratio A	Pilot ratio B	V = Viton	230000360
1 = 25 - 170 bar [363-2466 psi]	1 = 25 - 120 bar [363-1740 psi]	Omit = Buna-N	230000130
2 = 70 - 250 bar [1015-3626 psi]	2 = 60 - 200 bar [870-2900 psi]		
3 = 105 - 350 bar [1523-5076 psi]	3 = 90 - 280 bar [1305-4061 psi]	Housing and ports	Housing P/N
		00 = No Housing	No Housing
		SE1/2 = AL, 1/2 BSP	NCS12/3-SE-1/2
		SE3/4 = AL, 3/4 BSP	NCS12/3-SE-3/4
		SE85 = AL, #8 SAE	NCS12/3-SE-85
		SE125 = AL, #12 SAE	NCS12/3-SE-125
		Other housings available	
Pilot ratio			
A = 6.9 : 1			
B = 4.7 : 1			

To order this valve with a specific factory setting, contact your Danfoss ICS representative