



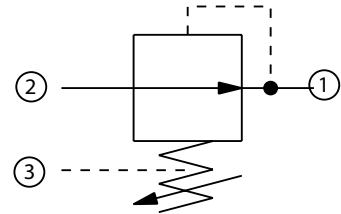
Pressure Reducing Valves Technical Information

Pressure Reducing, Non-Relieving, Direct Acting CP230-2

OPERATION

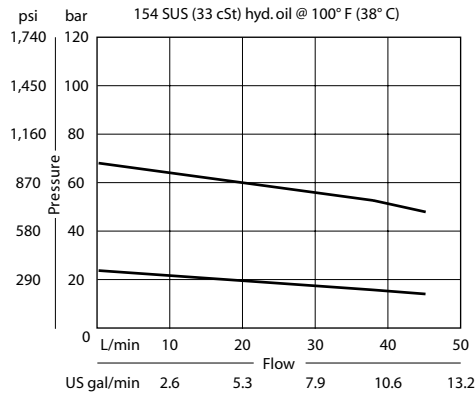
This is a direct-acting pressure-reducing (non-relieving) valve.

Schematic



SPECIFICATIONS

Theoretical performance



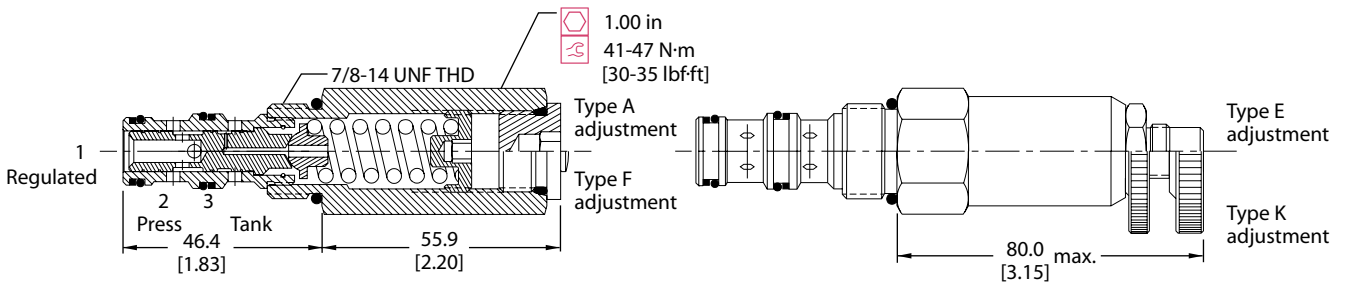
Specifications

Rated pressure	210 bar [3000 psi]
Rated flow at 7 bar [100 psi]	40 l/min [11 US gal/min]
Weight	0.25 kg [0.56 lb]
Cavity	SDC10-3

DIMENSIONS

mm [in]

Cross-sectional view



ORDERING INFORMATION

CP230 - 2 - B - 6S - A - C - 100

Seals
B = Buna-N
V = Viton

Seal kit
120027
120028

Housing and ports
0 = No Housing
SE3B = AI, 3/8 BSP
SE4B = AI, 1/2 BSP
6S = AI, #6 SAE
8S = AI, #8 SAE
Other housings available

Housing P/N
No Housing
SDC10-3-SE-3B
SDC10-3-SE-4B
CP10-3-6S
CP10-3-8S

Crack pressure
Code x 10 = psi
Example: 100 = 1000 psi

Pressure range

	bar	[psi]
A =	4-28	[50-400]
Std. setting	17	[250]
B =	5-55	[75-800]
Std. setting	28	[400]
C =	7-97	[100-1400]
Std. setting	69	[1000]
D =	34-166	[500-2400]
Std. setting	103	[1500]

Adjustment option
A = Internal
E = External
F = Tamper resistant
K = Knob