



# Pressure Reducing Valves Technical Information

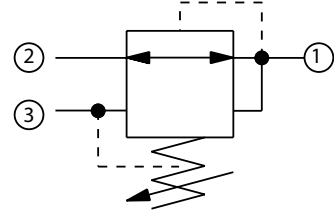
## Pressure Reducing, Relieving, Direct Acting

### CP230-1

#### OPERATION

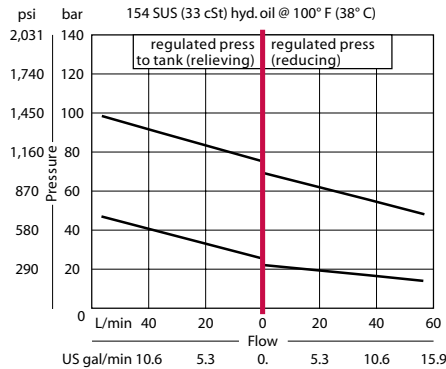
This is a direct-acting pressure reducing/relieving valve.

#### Schematic



#### SPECIFICATIONS

#### Theoretical performance



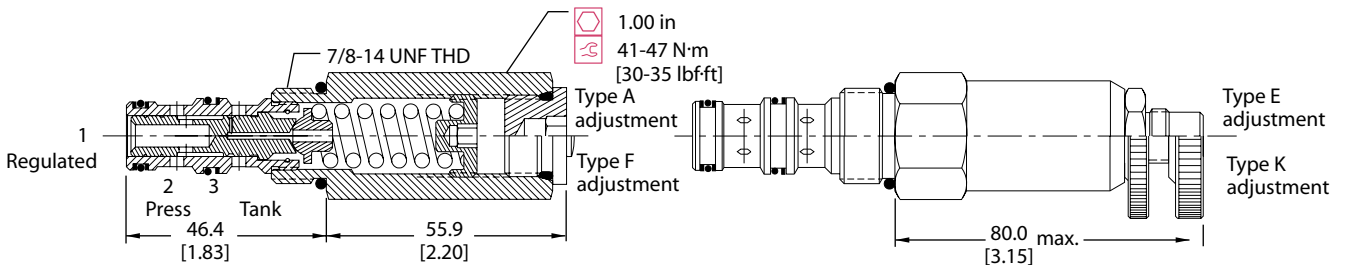
#### Specifications

<b>Rated pressure</b>	210 bar [3000 psi]
<b>Rated flow at 7 bar [100 psi]</b>	40 l/min [11 US gal/min]
<b>Weight</b>	0.23 kg [0.51 lb]
<b>Cavity</b>	<b>SDC10-3</b>

#### DIMENSIONS

mm [in]

#### Cross-sectional view



#### ORDERING INFORMATION

CP230 - 1 - B - 6S - A - C - 100

**Seals**  
B = Buna-N  
V = Viton

**Seal kit**  
120570  
120571

**Housing and ports**  
0 = No Housing  
SE3B = Al, 3/8 BSP  
SE4B = Al, 1/2 BSP  
6S = Al, #6 SAE  
8S = Al, #8 SAE  
Other housings available

**Housing P/N**  
No Housing  
SDC10-3-SE-3B  
SDC10-3-SE-4B  
CP10-3-6S  
CP10-3-8S

**Pressure setting**  
Code x 10psi (0.69 bar)  
Example: 100 = 1000 psi (70 bar)

Pressure range		bar	[psi]
A =	Std. setting	4-28	[50-400]
B =	Std. setting	5-55	[75-800]
C =	Std. setting	28	[400]
D =	Std. setting	69	[1000]
E =	Std. setting	7-97	[100-1400]
F =	Std. setting	34-166	[500-2400]
G =	Std. setting	103	[1500]

**Adjustment option**  
A = Internal  
E = External  
F = Tamper resistant  
K = Knob