



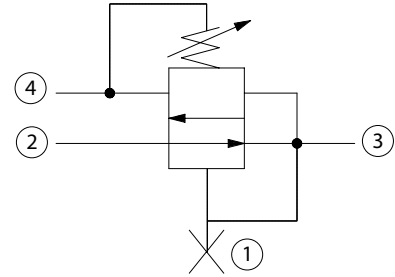
# Pressure Reducing Valves Technical Information

Pressure Reducing, Relieving, Direct Acting with Damping Port  
PRR10-DRD

## OPERATION

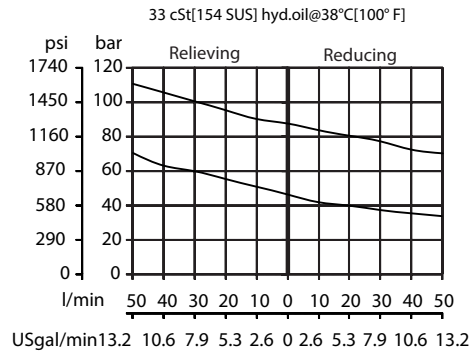
This is a direct-acting pressure reducing/relieving valve, with damping port.

## Schematic



## SPECIFICATIONS

### Theoretical performance



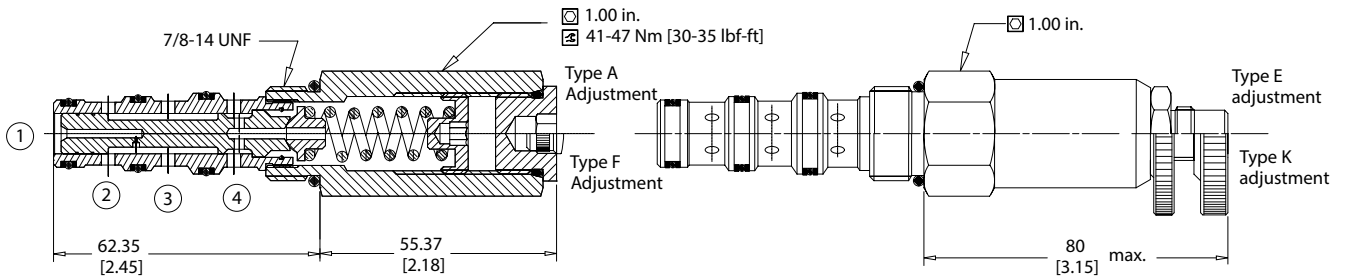
## Specifications

<b>Rated pressure</b>	207 bar [3000 psi]
<b>Rated Flow at 7 bar [100 psi]</b>	38 l/min [10 US gal/min]
<b>Weight</b>	0.29 kg [0.64 lb]
<b>Cavity</b>	<b>SDC10-4</b>

## DIMENSIONS

mm [in]

### Cross-sectional view



## ORDERING INFORMATION

### PRR10-DRD-4-E-104-B-00

Pressure Range	Housing and ports	Housing Part #
1 = 4-27 bar [50-400 psi]	00 = No Housing	No Housing
Standard Setting 21 bar [300 psi]	3B = Al, 3/8 BSP	CP10-4-3B
2 = 5-55 bar [70-800 psi]	4B = Al, 1/2 BSP	CP10-4-4B
Standard Setting 35 bar [500 psi]	6S = Al, #6 SAE	CP10-4-6S
3 = 7-96 bar [100-1400 psi]	8S = Al, #8 SAE	CP10-4-8S
Standard Setting 69 bar [1000 psi]	Seals	Seal Kit
4 = 35-165 bar [500-2400 psi]	B = Buna-N	120023
Standard Setting 104 bar [1500 psi]	V = Viton	120024
Adjustment Type	Pressure Setting	
A = Internal	104 = 104 bar [1500 psi]	
E = External	XXX = Standard Setting	
F = Tamper Resistant		
K = Knob		

P108 370E