



Check Valves Technical Information

Reverse Direction

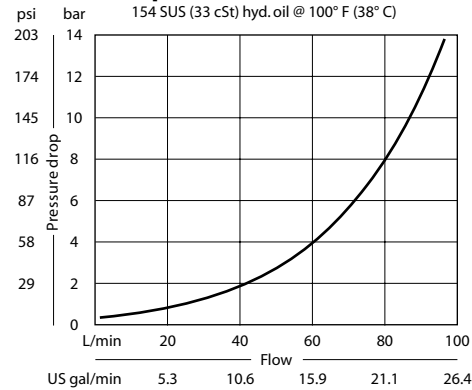
CP101-2

OPERATION

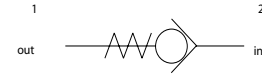
This valve allows free flow from 2 to 1 and blocks flow from 1 to 2.

SPECIFICATIONS

Theoretical performance



Schematic



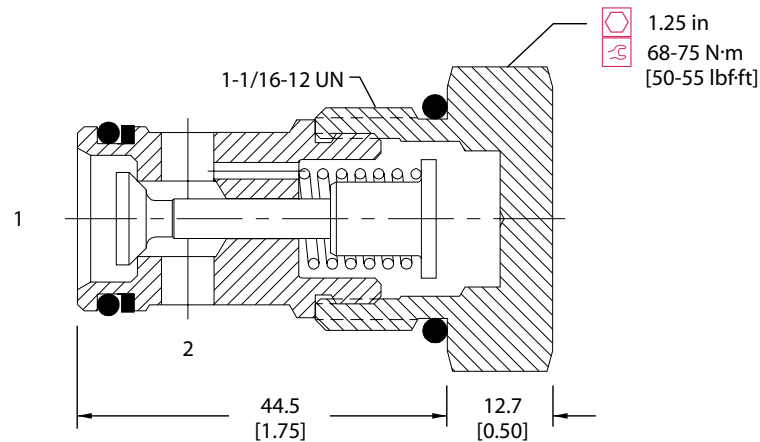
Specifications

Rated pressure	350 bar [5075 psi]
Rated flow at 7 bar	75 l/min
100 psi	[20 US gal/min]
Leakage	6 drops/min @ 207 bar 3000 psi
Weight	0.18 kg [0.40 lb]
Cavity	CP12-2

DIMENSIONS

mm in

Cross-sectional view



ORDERING INFORMATION

CP101-2-B-12S-005

Housing and ports
 0 = No Housing
 4B = Al, 1/2 BSP
 6B = Al, 3/4 BSP
 10S = Al, #10 SAE
 12S = Al, #12 SAE
 Other housings available

Housing P/N
 No Housing
 CP12-2-4B
 CP12-2-6B
 CP12-2-10S
 CP12-2-12S

Crack pressure
 005 = 0.34 bar [5 psi]
 015 = 1.0 bar [15 psi]
 065 = 4.5 bar [65 psi]

Seals
 B = Buna-N
 V = Viton

Seal kit
 120017
 120018