



# Relief Valves Technical Information

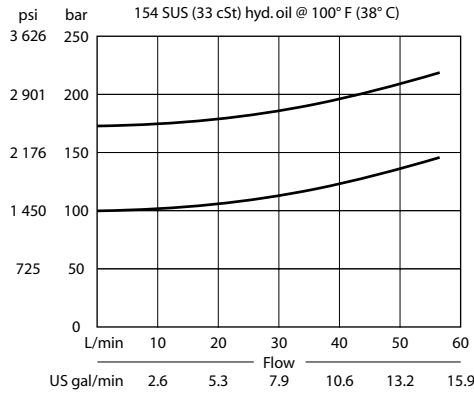
## Direct Acting CP200-3

### OPERATION

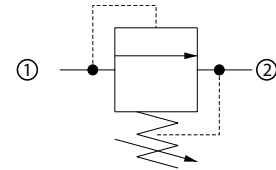
This is a direct-acting poppet type relief valve that relieves from 1 to 2.

### SPECIFICATIONS

#### Theoretical performance



#### Schematic



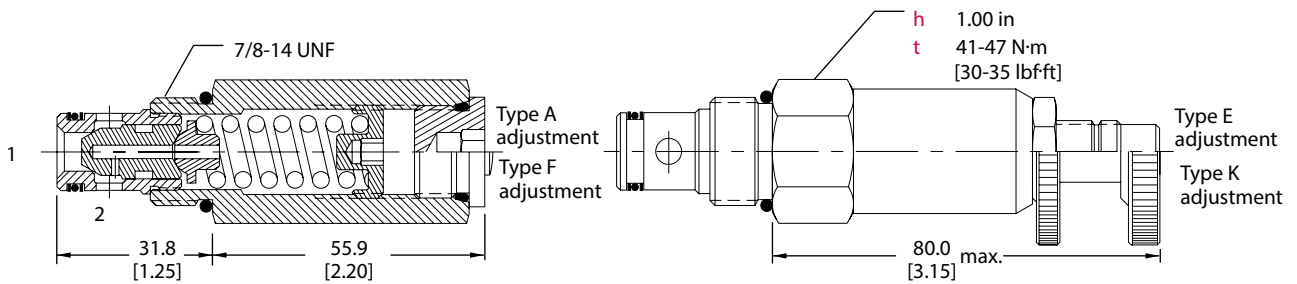
#### Specifications

<b>Rated pressure</b>	250 bar [3600 psi]
<b>Rated flow</b>	40 l/min [11 US gal/min]
<b>Leakage</b>	10 drops/min @ 80% of pressure setting
<b>Weight</b>	0.21 kg [0.47 lb]
<b>Cavity</b>	<b>SDC10-2</b>

### DIMENSIONS

mm [in]

#### Cross-sectional view



### ORDERING INFORMATION

CP200 - 3 - B - 6S - A - C - 150

- Seals
  - B = Buna-N
  - V = Viton
- Housing and ports
  - 0 = No Housing
  - DG3B = Al, 3/8 BSP
  - DG4B = Al, 1/2 BSP
  - 6S = Al, #6 SAE
  - 8S = Al, #8 SAE
- Other housings available
- Adjustment option
  - A = Internal
  - E = External
  - F = Tamper resistant
  - K = Knob
- Seal kit
  - 120073
  - 120074
- Housing P/N
  - No Housing
  - SDC10-2-DG-3B
  - SDC10-2-DG-4B
  - CP10-2-6S
  - CP10-2-8S
- Crack pressure
  - Code x 10 = psi
  - Example: 150 = 1500 psi
- Pressure range
 

Code	bar	[psi]
A	7-69	[100-1000]
Standard	28	[400]
B	17-172	[250-2500]
Standard	69	[1000]
C	41-248	[600-3600]
Standard	103	[1500]