



# Relief Valves Technical Information

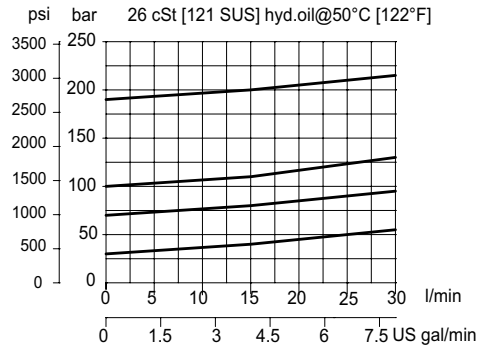
## Direct Acting RV08-DR

### OPERATION

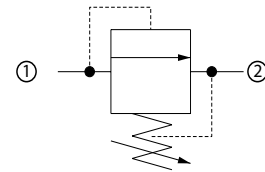
This is a direct-acting, poppet-type relief valve that relieves from 1 to 2. It features a highly damped poppet for smooth and stable response.

### SPECIFICATIONS

#### Theoretical performance



#### Schematic



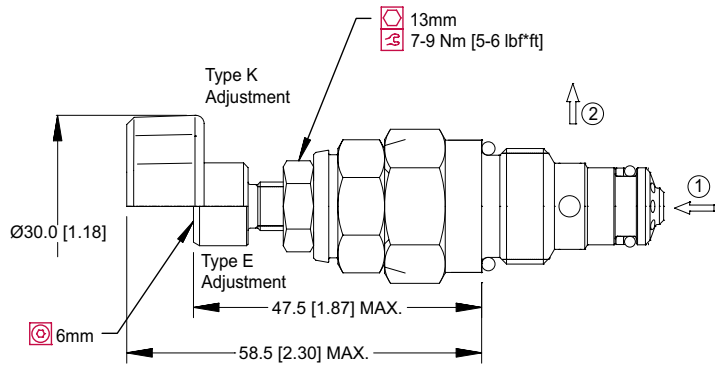
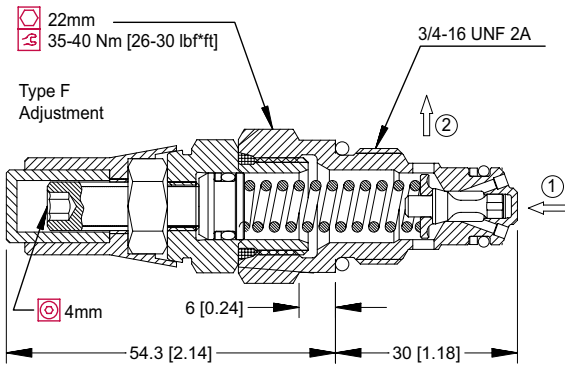
#### Specifications

<b>Rated pressure</b>	250 bar [3600 psi]
<b>Rated flow</b>	30 l/min [8 US gal/min]
<b>Leakage</b>	10 drops/min @ 80% of pressure setting
<b>Weight</b>	0.10 kg [0.22 lb]
<b>Cavity</b>	<b>SDC08-2</b>

### DIMENSIONS

mm [in]

#### Cross-sectional view



### ORDERING INFORMATION

**RV08-DR-1-E-XXX-B-4S**

<p><b>Pressure range</b></p> <p>1 = 20-80 Bar [290-1150 psi]</p> <p>2 = 35-160 Bar [500-2300 psi]</p> <p>3 = 60-250 Bar [870-3600 psi]</p>	<p><b>Housing and ports</b></p> <p>00 = No Housing</p> <p>DG2B = Al, 1/4 BSP</p> <p>DG3B = Al, 3/8 BSP</p> <p>4S = Al, #4 SAE</p> <p>6S = Al, #6 SAE</p> <p>Other housings available</p>	<p><b>Housing P/N</b></p> <p>No Housing SDC08-2-DG-2B</p> <p>SDC08-2-DG-3B</p> <p>CP08-2-4S</p> <p>CP08-2-6S</p>
<p><b>Adjustment option</b></p> <p>E = External</p> <p>F = Tamper resistant</p> <p>K = Knob</p>	<p><b>Seals</b></p> <p>B = Buna-N</p> <p>V = Viton</p>	<p>Seal Kit</p> <p>354000119</p> <p>354000219</p>
<p><b>Crack pressure</b></p> <p>Code = Setting in Bar</p> <p>XXX = No specific setting</p>		