

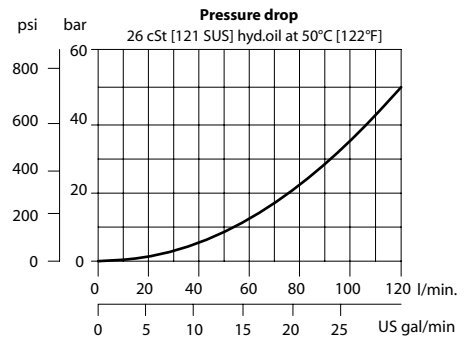
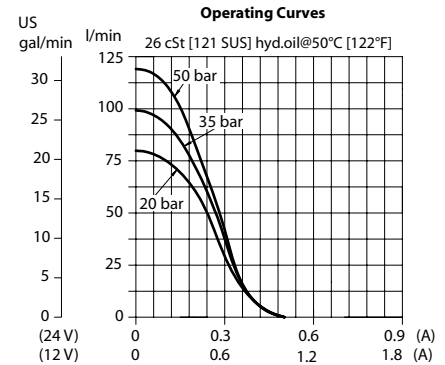
### OPERATION

This is a non-compensated, normally-open, pilot-operated, poppet-type, proportional flow-control. Controlled flow is from port 2 to 1.

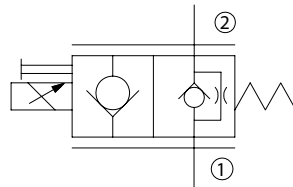
### SPECIFICATIONS

<b>Rated pressure</b>	260 bar [3770 psi]
<b>Rated flow at 10 bar [145 psi]</b>	45 l/min [12 US gal/min]
<b>Leakage</b>	6 drops/min @ Rated pressure
<b>Weight</b>	0.54 kg [1.19 lb]
<b>Hysteresis</b>	8% maximum
<b>Cavity</b>	<b>SDC10-2</b>
<b>Standard Coil</b>	<b>M19P 22 Watt</b>

### THEORETICAL PERFORMANCE



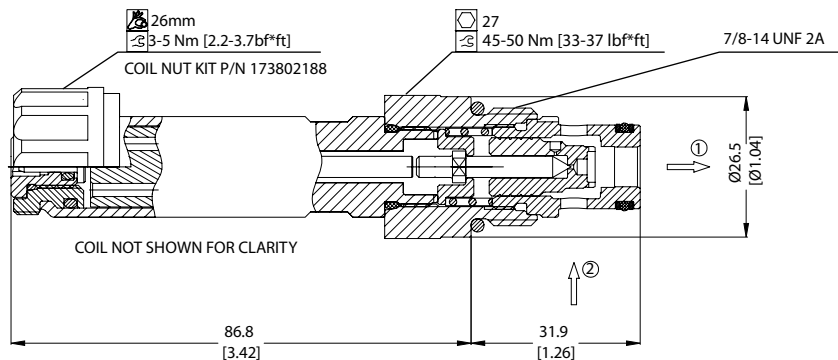
### SCHEMATIC



### DIMENSIONS

mm [in]

### Cross-sectional view



### ORDERING INFORMATION

PSVP10 - NOR - 12D - DE - SPS - B - 00

Proportional Flow Control Valve,  
Non-Compensated, Poppet Type,  
Normally Open, Free Reverse Flow,  
10 Size Cavity

Code	Coil Voltage	Code	Coil Termination	Code*	Manual Override	Code	Seal	Seal Kit	Body & Ports	Body Nomenclature
00	No Coil	00	No Coil	Omit	Push Pin (Standard)	B	Buna-N	354004019	00 = No housing	No Body
12D	12V DC	AJ	Amp Junior	SPS	Screw Style (Push-Type Valve)	V	Viton	354003419	6S = Al, #6 SAE	CP10-2-6S
24D	24 V DC	DE	Deutsch						8S = Al, #8 SAE	CP10-2-8S
		DN	DIN 43650						DG3B = Al, 3/8 BSP	SDC10-2-DG3B
									DG4B = Al, 1/2 BSP	SDC10-2-DG4B
									Other housings available	

\*PB (Push-Button) available upon request