



# Relief Valves Technical Information

## Differential Area

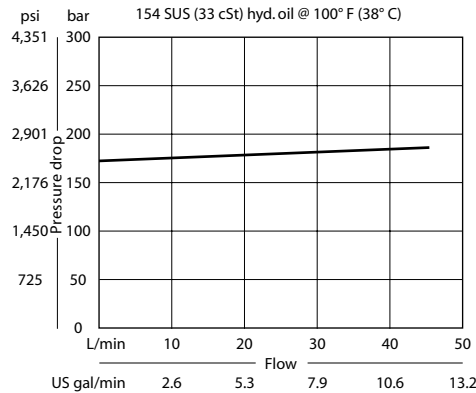
### CP200-2

### OPERATION

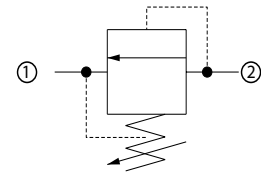
This is a direct acting differential area poppet type relief valve that relieves from 2 to 1.

### SPECIFICATIONS

#### Theoretical performance



#### Schematic



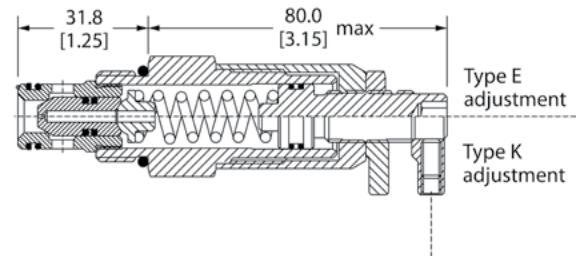
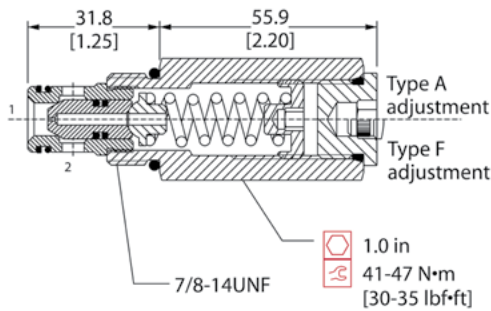
#### Specifications

|                       |                                      |
|-----------------------|--------------------------------------|
| <b>Rated pressure</b> | 350 bar [5075 psi]                   |
| <b>Rated flow</b>     | 40 l/min [11 US gal/min]             |
| <b>Leakage</b>        | 10 drops/min @ 80% of crack pressure |
| <b>Weight</b>         | 0.21 kg [0.46 lb]                    |
| <b>Cavity</b>         | SDC10-2                              |

### DIMENSIONS

mm [in]

#### Cross-sectional view



### ORDERING INFORMATION

**CP200-2 - B - 6S - E - D - 150**

**Seals**

|            |                  |
|------------|------------------|
| B = Buna-N | Seal kits 120015 |
| V = Viton  | 120016           |

**Housing and ports**

|      |   |             |
|------|---|-------------|
| 0    | = | No Housing  |
| DG3B | = | Al, 3/8 BSP |
| DG4B | = | Al, 1/2 BSP |
| 6S   | = | Al, #6 SAE  |
| 8S   | = | Al, #8 SAE  |

Other housings available

**Housing P/N**

|            |               |
|------------|---------------|
| No Housing | SDC10-2-DG-3B |
|            | SDC10-2-DG-4B |
|            | CP10-2-6S     |
|            | CP10-2-8S     |

**Adjustment options**

|   |   |                  |
|---|---|------------------|
| A | = | Internal         |
| F | = | Tamper resistant |
| E | = | External         |
| K | = | Knob             |

**Crack pressure**  
Code x 10 = psi  
Example: 150 = 1500 psi

**Adjustment ranges**

|              |            |               |
|--------------|------------|---------------|
| D = Standard | 69-345 bar | 1000-5000 psi |
|              | 103        | [1500]        |