



Relief Valves Technical Information

Differential Area

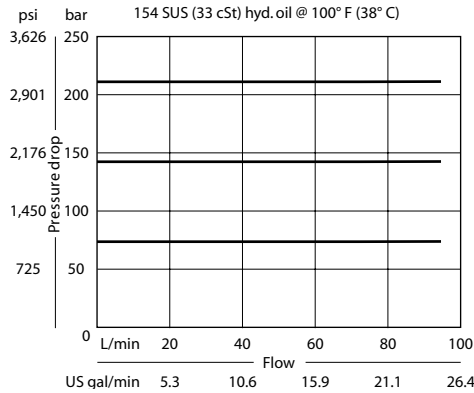
CP200-1

OPERATION

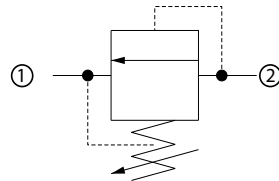
This is a direct acting differential area poppet type relief valve that relieves from 2 to 1.

SPECIFICATIONS

Theoretical performance



Schematic



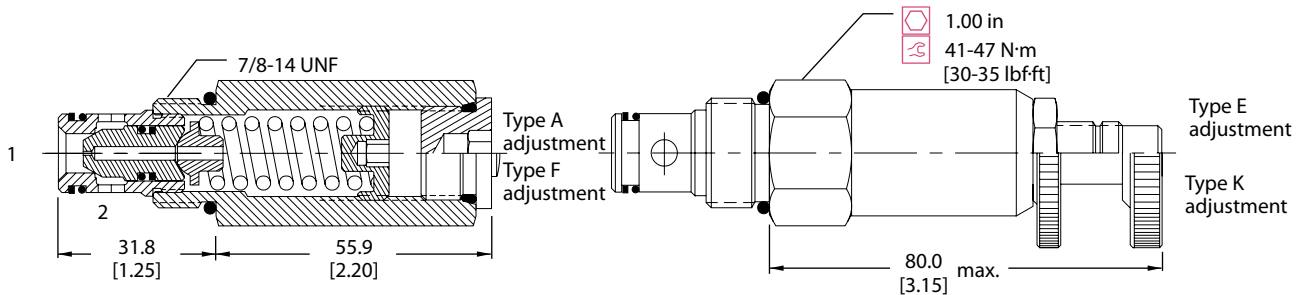
Specifications

Rated pressure	250 bar [3600 psi]
Rated flow	75 l/min [20 US gal/min]
Leakage	10 drops/min @ 80% of pressure setting
Weight	0.21 kg [0.46 lb]
Cavity	SDC10-2

DIMENSIONS

mm [in]

Cross-sectional view



ORDERING INFORMATION

CP200 - 1 - B - 8S - A - C - 150

- Seals**
 - B = Buna-N
 - V = Viton
- Housing and ports**
 - 0 = No Housing
 - DG3B = Al, 3/8 BSP
 - DG4B = Al, 1/2 BSP
 - 6S = Al, #6 SAE
 - 8S = Al, #8 SAE

Other housings available
- Adjustment option**
 - A = Internal
 - E = External
 - F = Tamper resistant
 - K = Knob
- Seal kit**
 - 120015
 - 120016
- Housing P/N**
 - No Housing
 - SDC10-2-DG-3B
 - SDC10-2-DG-4B
 - SDC10-2-6S
 - SDC10-2-8S
- Crack pressure**
 - Code x 10 = psi
 - Example: 150 = 1500 psi
- Pressure range**

	bar	[psi]
A =	7-55	[100-800]
Standard	28	[400]
B =	17-138	[250-2000]
Standard	69	[1000]
C =	41-248	[600-3600]
Standard	103	[1500]