



# Shuttle Valves Technical Information

## Hot Oil Shuttle

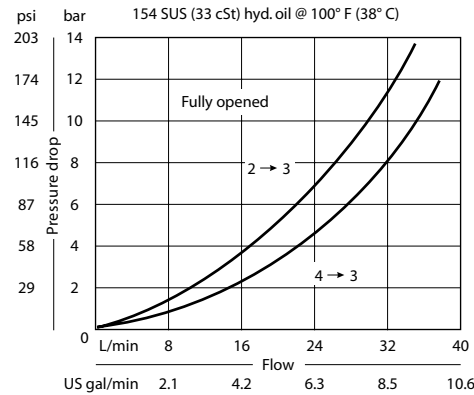
### CP720-3

#### OPERATION

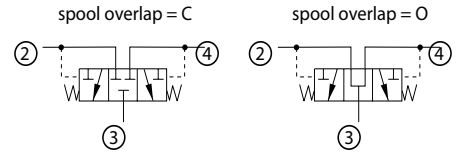
This valve has an internally piloted spool that directs flow from the lower pressure inlet, 2 or 4, to the output at 3.

#### SPECIFICATIONS

#### Theoretical performance



#### Schematic



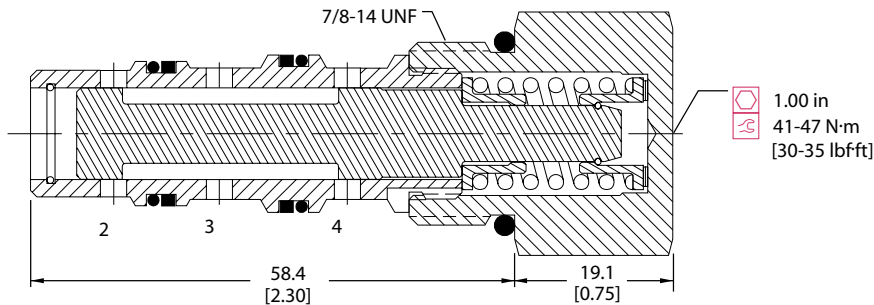
#### Specifications

<b>Rated pressure</b>	350 bar [5075 psi]
<b>Rated flow at 7 bar [100 psi]</b>	25 l/min [7 US gal/min]
<b>Leakage</b>	82 cm <sup>3</sup> /min [5 in <sup>3</sup> /min] @ 207 bar [3000 psi]
<b>Weight</b>	0.15 kg [0.34 lb]
<b>Cavity</b>	<b>SDC10-4</b>

#### DIMENSIONS

mm [in]

#### Cross-sectional view



#### ORDERING INFORMATION

