



Relief Valves Technical Information

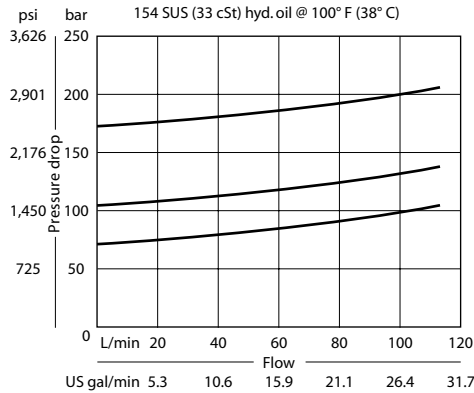
Pilot Operated CP210-2

OPERATION

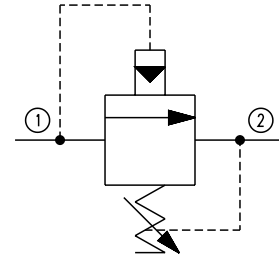
This is a pilot operated spool type relief valve that relieves pressure from 1 to 2.

SPECIFICATIONS

Theoretical performance



Schematic

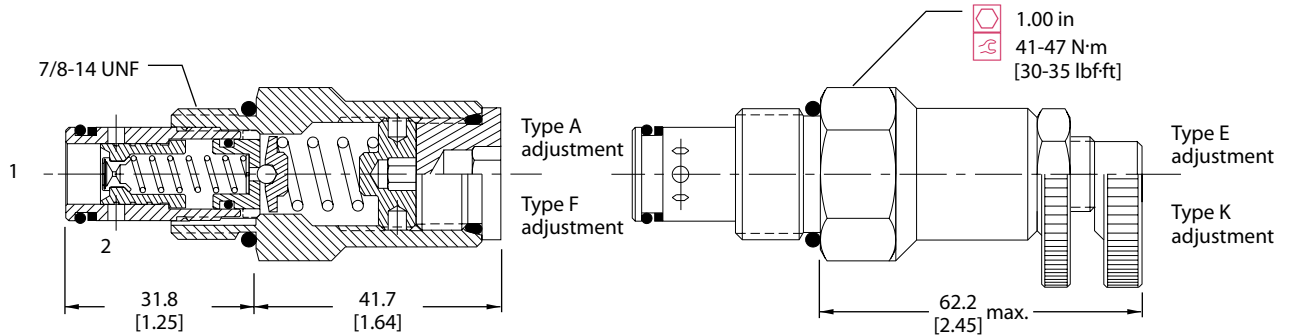


Specifications

Rated pressure	350 bar [5075 psi]
Rated flow	115 l/min [30 US gal/min]
Leakage	82 cm ³ /min [5 in ³ /min] @ 207 bar [3000 psi]
Weight	0.18 kg [0.40 lb]
Cavity	SDC10-2

DIMENSIONS

Cross-sectional view



ORDERING INFORMATION

CP210 - 2 - B - 6S - A - C - 150

Seals	B = Buna-N V = Viton	Seal kit	120015 120016	Crack pressure	Code x 10 = psi Example: 150 = 1500 psi
Housing and ports	0 = No Housing DG3B = Al, 3/8 BSP DG4B = Al, 1/2 BSP 6S = Al, #6 SAE 8S = Al, #8 SAE Other housings available	Housing P/N	No Housing SDC10-2-DG-3B SDC10-2-DG-4B CP10-2-6S CP10-2-8S	Pressure range	bar [psi]
Adjustment option	A = Internal E = External F = Tamper resistant K = Knob			A = 14-69 [200-800] Standard 28 [400] B = 14-103 [200-1500] Standard 69 [1000] C = 28-207 [400-3000] Standard 103 [1500] D = 28-345 [400-5000] Standard 103 [1500]	