



Relief Valves Technical Information

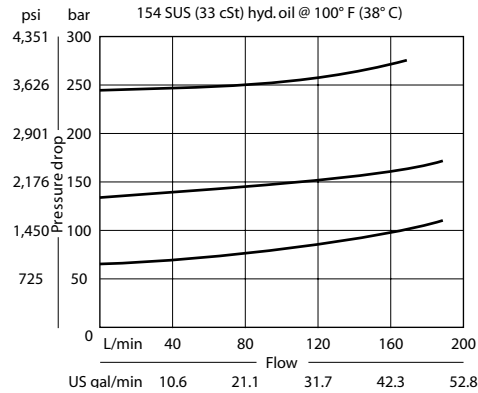
Pilot Operated CP211-2

OPERATION

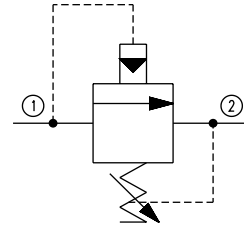
This valve relieves from 1 to 2 and is a pilot operated spool type relief.

SPECIFICATIONS

Theoretical performance



Schematic

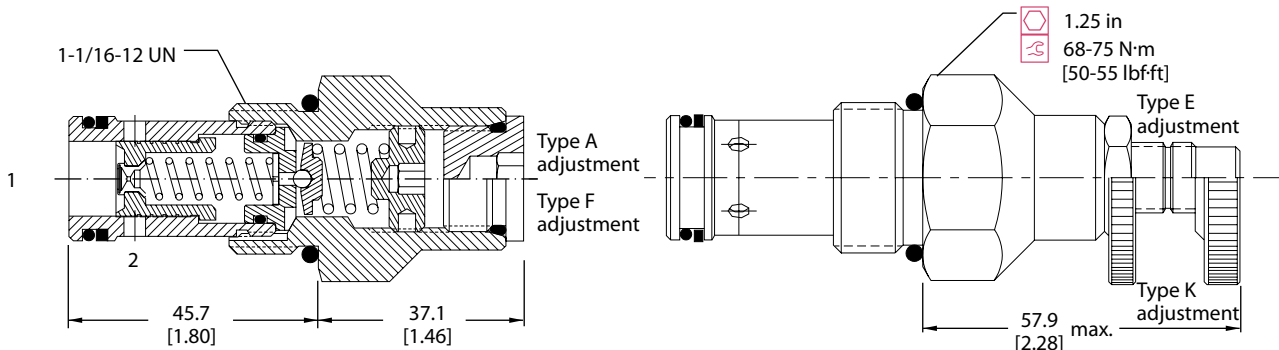


Specifications

Rated pressure	350 bar [5075 psi]
Rated flow	190 l/min [50 US gal/min]
Leakage	82 cm ³ /min [5 in ³ /min] @ 207 bar [3000 psi]
Weight	0.17 kg [0.37 lb]
Cavity	CP12-2

DIMENSIONS

Cross-sectional view



ORDERING INFORMATION

Seals
B = Buna-N
V = Viton

Housing and ports
0 = No Housing
4B = Al, 1/2 BSP
6B = Al, 3/4 BSP
10S = Al, #10 SAE
12S = Al, #12 SAE
Other housings available

Adjustment option
A = Internal
E = External
F = Tamper resistant
K = Knob

Seal kit
120017
120018

Housing P/N
No Housing
CP12-2-4B
CP12-2-6B
CP12-2-10S
CP12-2-12S

CP211 - 2 - B - 12S - A - C - 150

Crack pressure
Code x 10 = psi
Example: 150 = 1500 psi

Pressure range

	bar	[psi]
A =	14-69	[200-800]
Standard	28	[400]
B =	14-103	[300-1500]
Standard	69	[1000]
C =	28-207	[400-3000]
Standard	103	[1500]
D =	28-345	[400-5000]
Standard	103	[1500]