



Relief Valves Technical Information

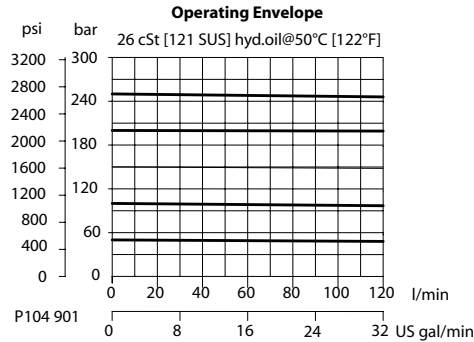
Pilot Operated RV10-POP

OPERATION

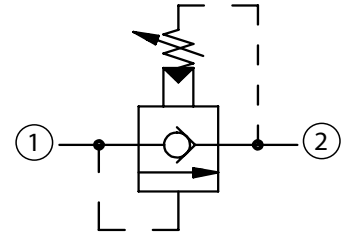
This is a pilot-operated poppet type relief valve that relieves pressure from 1 to 2, with an integral free-flow check from 2 to 1.

SPECIFICATIONS

Theoretical performance



Schematic

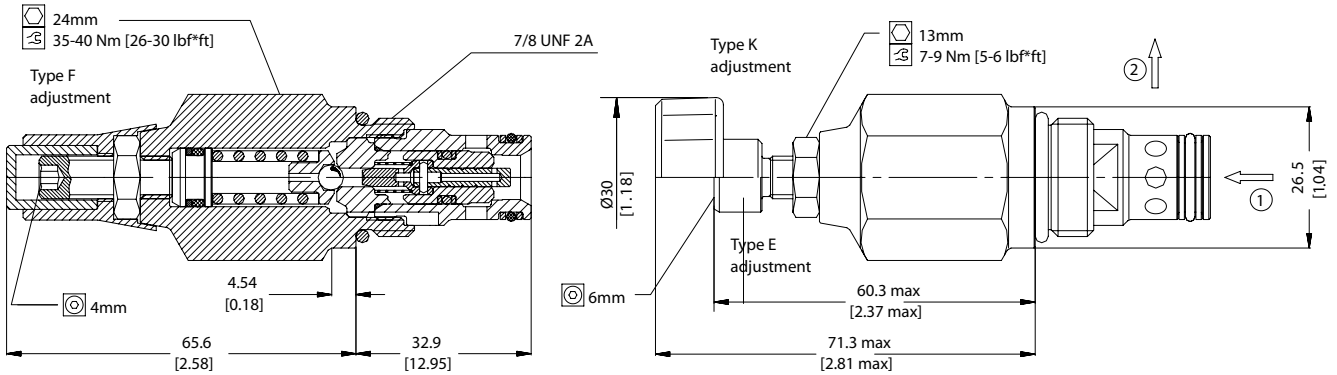


Specifications

Rated pressure	250 bar [3625 psi]
Rated flow	120 l/min [32 US gal/min]
Leakage	6 drops/min @ 80% of pressure setting
Weight	0.22 kg [0.49 lb]
Cavity	SDC10-2

DIMENSIONS

Cross-sectional view



ORDERING INFORMATION

RV10 - POP - 3 - E - XXX - B - 00

Pressure Range
3 = 25-250 Bar [360-3600 psi]

Adjustment option
E = External adjustment
F = Tamper resistant
K = Knob adjustment

Cracking pressure
Code = Std. setting in bar:
100 = 100 Bar [1500 psi]
XXX = No specific setting

Body and Ports
Omit = Cartridge only
6S = Al, #6 SAE
8S = Al, #8 SAE
DG3B = Al, 3/8 BSP
DG4B = Al, 1/2 BSP
Other housing available

Seals
B = Buna-N seals 354004019
V = Viton seals 354003419

Body Nomenclature
No Body
CP10-2-6S
CP10-2-8S
SDC10-2-DG3B
SDC10-2-DG4B