



Relief Valves Technical Information

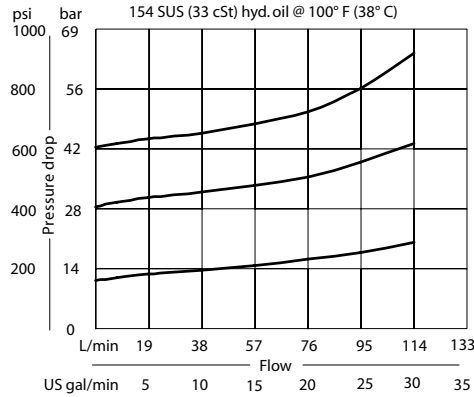
Direct Acting CP211-1

OPERATION

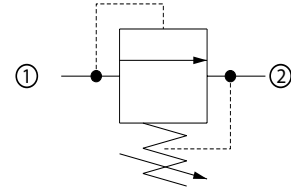
This is a direct acting spool-type relief valve that relieves from 1 to 2.

SPECIFICATIONS

Theoretical performance



Schematic



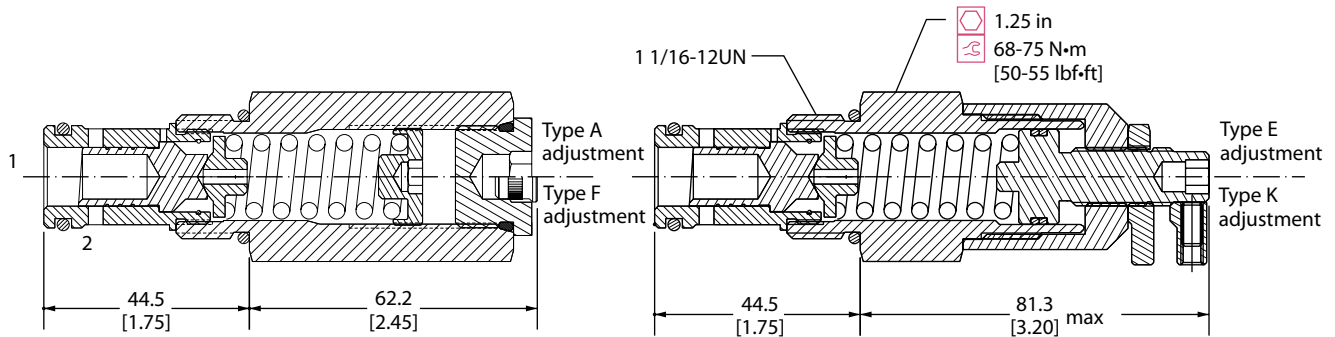
Specifications

| | |
|-----------------------|----------------------------------------------------------------------------|
| Rated pressure | 40 bar [600 psi] |
| Rated flow | 75 l/min [20 US gal/min] |
| Leakage | 82 cm ³ /min [5 in ³ /min] @ 80% of pressure setting |
| Weight | 0.41 kg [0.90 lb] |
| Cavity | CP12-2 |

DIMENSIONS

mm [in]

Cross-sectional view



ORDERING INFORMATION

CP211-1-B-10S-A-C-040

