



Relief Valves Technical Information

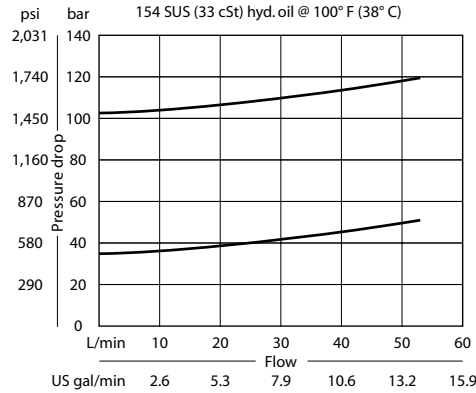
Direct Acting CP210-1

OPERATION

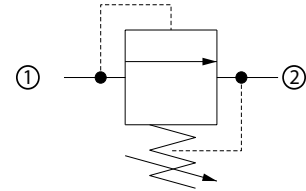
This is a direct acting spool-type relief valve that relieves from 1 to 2.

SPECIFICATIONS

Theoretical performance



Schematic



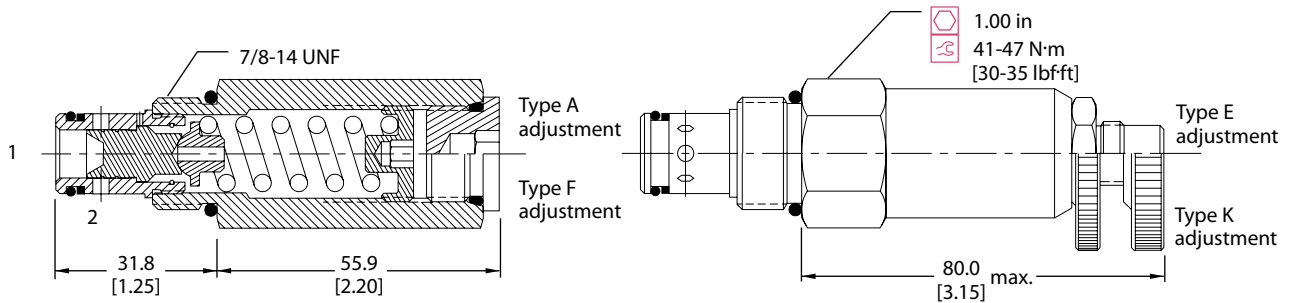
Specifications

| | |
|-----------------------|--|
| Rated pressure | 210 bar [3000 psi] |
| Rated flow | 45 l/min [12 US gal/min] |
| Leakage | 82 cm ³ /min [5 in ³ /min] @ 80% of pressure setting |
| Weight | 0.22 kg [0.48 lb] |
| Cavity | SDC10-2 |

DIMENSIONS

mm [in]

Cross-sectional view



ORDERING INFORMATION

CP210 - 1 - B - 6S - A - C - 075

| | | | |
|--------------------------|-----------------|--------------------|------------------------|
| Seals | Seal kit | Housing P/N | Crack pressure |
| B = Buna-N | 120015 | No Housing | Code x 10 = psi |
| V = Viton | 120016 | SDC10-2-DG-3B | Example: 075 = 750 psi |
| | | SDC10-2-DG-4B | |
| Housing and ports | | CP10-2-6S | Pressure range |
| 0 = No Housing | | CP10-2-8S | |
| DG3B = Al, 3/8 BSP | | | bar [psi] |
| DG4B = Al, 1/2 BSP | | | A = 3.4-28 [50-400] |
| 6S = Al, #6 SAE | | | Standard 17 [250] |
| 8S = Al, #8 SAE | | | B = 5.5-55 [80-800] |
| Other housings available | | | Standard 28 [400] |
| Adjustment option | | | C = 6.9-97 [100-1400] |
| A = Internal | | | Standard 52 [750] |
| E = External | | | D = 34-166 [500-2400] |
| F = Tamper resistant | | | Standard 103 [1500] |
| K = Knob | | | |