



Relief Valves Technical Information

Differential Area

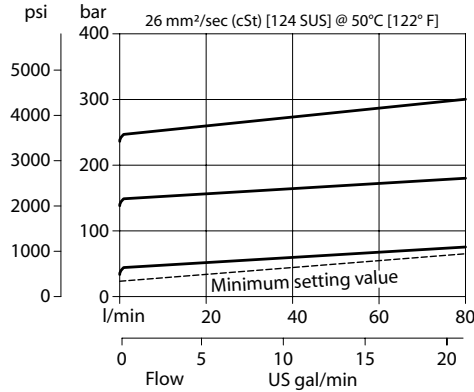
VSB 06-CN

OPERATION

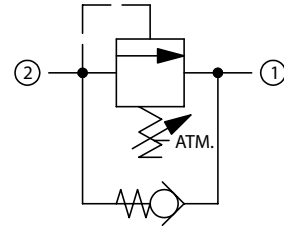
This is a direct-acting, differential area, atmospherically-vented, poppet-type relief valve that relieves from 2 to 1 with an integral free-flow check from 1 to 2.

SPECIFICATIONS

Theoretical performance



Schematic



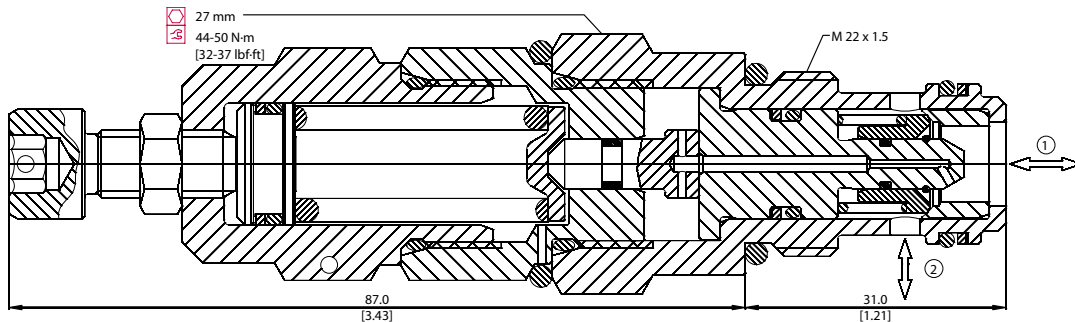
Specifications

Rated pressure	350 bar [5075 psi]
Rated flow	80 l/min [21 US gal/min]
Weight	0.29 kg [0.64 lb]
Cavity	NCS06/2

DIMENSIONS

mm [in]

Cross-sectional view



ORDERING INFORMATION

VSB 06-CN - 1 - 00 - V - XXX

Setting range	Seals V = Viton Omit = Buna-N	Seal Kit 230000380 230000060
1 = 25 - 140 bar [363 - 2031 psi] 2 = 70 - 210 bar [1015 - 3046 psi] 3 = 105 - 350 bar [1523 - 5076 psi]	Housing and ports 00 = No Housing DG3B = AL, 3/8 BSP DG4B = AL, 1/2 BSP DG6S = AL, #6 SAE DG8S = AL, #8 SAE Other housings available	Housing P/N No Housing NCS06/2-DG-3/8 NCS06/2-DG-1/2 NCS06/2-DG-6S NCS06/2-DG-8S

To order this valve with a specific factory setting, contact your Danfoss ICS representative