



# Relief Valves Technical Information

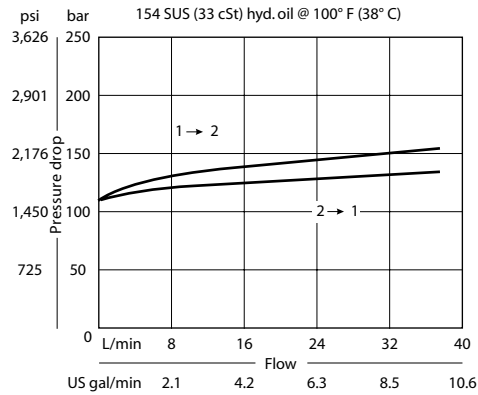
## Bi-Directional CP200-7

### OPERATION

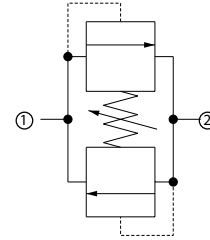
This is a bi-directional relief valve that relieves pressure from 1 to 2 and from 2 to 1.

### SPECIFICATIONS

#### Theoretical performance



#### Schematic

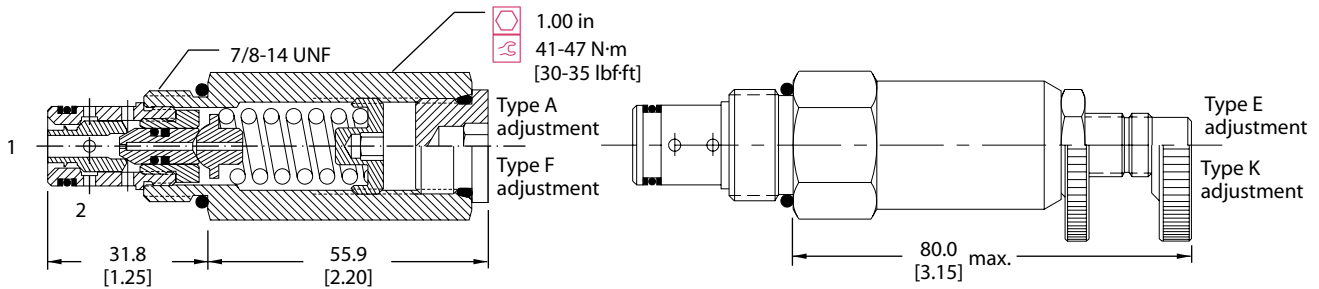


#### Specifications

<b>Rated pressure</b>	250 bar [3600 psi]
<b>Rated flow</b>	40 l/min [11 US gal/min]
<b>Leakage</b>	5 cm <sup>3</sup> /min [0.3 in <sup>3</sup> /min] @ 80% of pressure setting
<b>Weight</b>	0.20 kg [0.43 lb]
<b>Cavity</b>	<b>SDC10-2</b>

### DIMENSIONS

#### Cross-sectional view



### ORDERING INFORMATION

**CP200 - 7 - B - 8S - A - C - 150**

<b>Seals</b>		<b>Seal kit</b>		<b>Crack pressure</b>	
B = Buna-N		120073		Code x 10 = psi	
V = Viton		120074		Example: 150 = 1500 psi	
<b>Housing and ports</b>		<b>Housing P/N</b>		<b>Pressure range</b>	
0 = No Housing		No Housing		A = 7-41	bar [psi]
DG3B = Al, 3/8 BSP		SDC10-2-DG-3B		Standard 28	[100-600]
DG4B = Al, 1/2 BSP		SDC10-2-DG-4B		B = 17-138	[250-2000]
6S = Al, #6 SAE		CP10-2-6S		Standard 69	[1000]
8S = Al, #8 SAE		CP10-2-8S		C = 41-248	[600-3600]
Other housings available				Standard 103	[1500]
<b>Adjustment option</b>					
A = Internal					
E = External					
F = Tamper resistant					
K = Knob					