



# Sequence Valves Technical Information

## 2-Way, Normally Closed

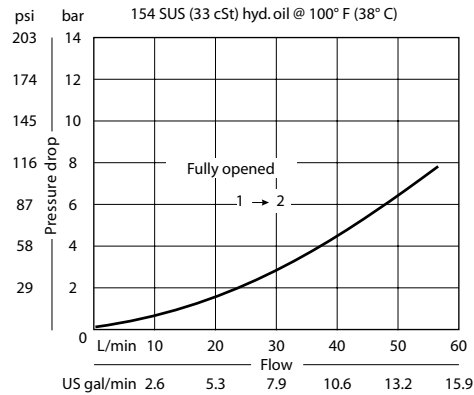
### CP240-8

### OPERATION

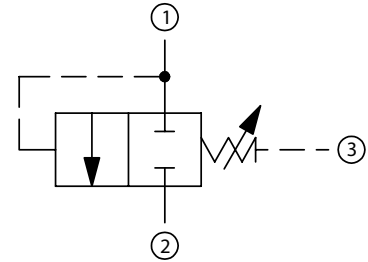
Valve blocks flow from 1 to 2 until sufficient pressure is applied at 1

### SPECIFICATIONS

#### Theoretical performance



#### Schematic



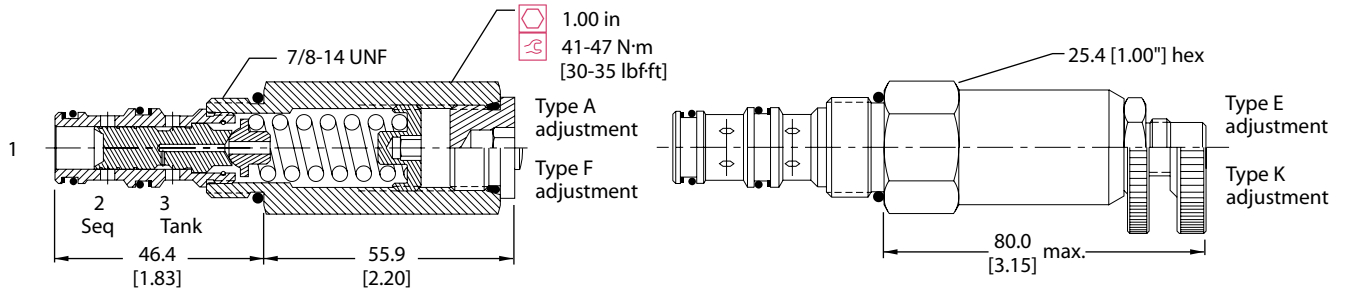
#### Specifications

Rated pressure	210 bar [3000 psi]
Rated flow at 7 bar [100 psi]	55 l/min [14 US gal/min]
Weight	0.26 kg [0.57 lb]
Cavity	<b>SDC10-3</b>

### DIMENSIONS

mm [in]

#### Cross-sectional view



### ORDERING INFORMATION

**CP240 - 8 - B - 6S - A - C-050**

<p><b>Seals</b></p> <p>B = Buna-N V = Viton</p>	<p><b>Seal kit</b></p> <p>120027 120028</p>	<p><b>Crack pressure</b></p> <p>Code x 10 = psi Example: 100 = 1000 psi</p>																								
<p><b>Housing and ports</b></p> <p>0 = No Housing SE3B = Al, 3/8 BSP SE4B = Al, 1/2 BSP 6S = Al, #6 SAE 8S = Al, #8 SAE</p> <p>Other housings available</p>	<p><b>Housing P/N</b></p> <p>No Housing SDC10-3-SE-3B SDC10-3-SE-4B CP10-3-6S CP10-3-8S</p>	<p><b>Pressure range</b></p> <table border="0"> <tr> <td>A =</td> <td>4-28</td> <td>[psi]</td> </tr> <tr> <td>Std. setting</td> <td>17</td> <td>[250]</td> </tr> <tr> <td>B =</td> <td>5-55</td> <td>[75-800]</td> </tr> <tr> <td>Std. setting</td> <td>28</td> <td>[400]</td> </tr> <tr> <td>C =</td> <td>7-97</td> <td>[100-1400]</td> </tr> <tr> <td>Std. setting</td> <td>69</td> <td>[1000]</td> </tr> <tr> <td>D =</td> <td>34-166</td> <td>[500-2400]</td> </tr> <tr> <td>Std. setting</td> <td>103</td> <td>[1500]</td> </tr> </table>	A =	4-28	[psi]	Std. setting	17	[250]	B =	5-55	[75-800]	Std. setting	28	[400]	C =	7-97	[100-1400]	Std. setting	69	[1000]	D =	34-166	[500-2400]	Std. setting	103	[1500]
A =	4-28	[psi]																								
Std. setting	17	[250]																								
B =	5-55	[75-800]																								
Std. setting	28	[400]																								
C =	7-97	[100-1400]																								
Std. setting	69	[1000]																								
D =	34-166	[500-2400]																								
Std. setting	103	[1500]																								
<p><b>Adjustment option</b></p> <p>A = Internal E = External F = Tamper resistant K = Knob</p>																										