



# Sequence Valves Technical Information

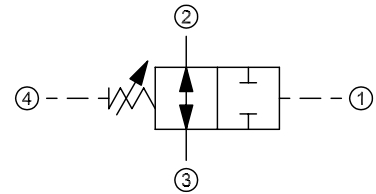
## 2-Way, Normally Open

### CP240-5

### OPERATION

Valve allows flow between 2 and 3 until sufficient pressure is applied at 1 to close the valve. Note that pressure at 4 is additive to the spring setting.

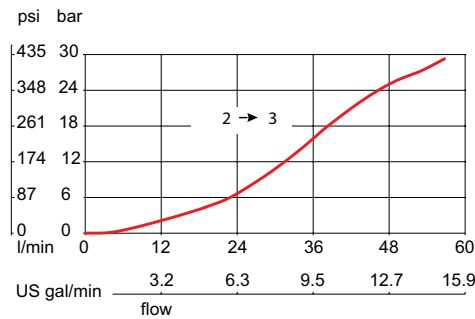
### Schematic



### SPECIFICATIONS

#### Theoretical performance

33 cSt [154 SUS] hyd.oil @ 38°C [100° F]



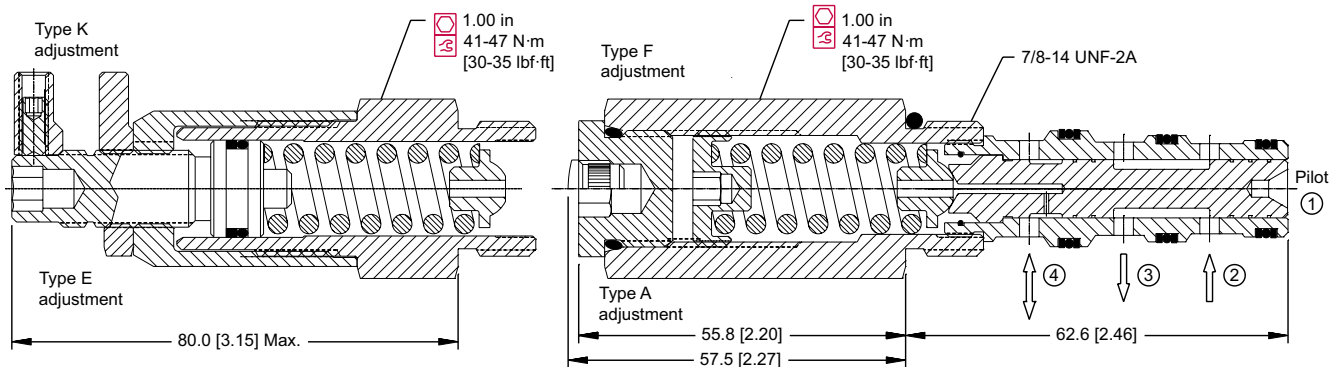
#### Specifications

Rated pressure	210 bar [3000 psi]
Rated flow at 7 bar [100 psi]	25 l/min [7 US gal/min]
Weight	0.26 kg [0.57 lb]
Cavity	<b>SDC10-4</b>

### DIMENSIONS

mm [in]

#### Cross-sectional view



### ORDERING INFORMATION

#### CP240-5-V-L3B-A-B-050

#### Seals

##### Seal kit

B = Buna-N 120023  
V = Viton 120024

#### Housing and ports

0 = No Housing  
L3B = AL, 3/8 BSP  
L4B = AL, 1/2 BSP  
6S = AL, #6 SAE  
8S = AL, #8 SAE  
Other housings available

#### Housing P/N

No Housing  
SDC10-4-L-3B  
SDC10-4-L-4B  
SDC10-4-6S  
SDC10-4-8S

#### Sequence Pressure

Code x 0.69 = bar  
[Code x 10 = psi]  
Example: 050 = 34.5 bar [500 psi]

#### Pressure range

Code	bar	[psi]
A	3.4 - 27.6	[50 - 400]
B	4.8 - 55.2	[70 - 800]
C	6.9 - 96.5	[100 - 1400]
D	34.5 - 165.5	[500 - 2400]

#### Adjustment option

A = Internal  
E = External  
F = Tamper resistant  
K = Knob