



# Sequence Valves Technical Information

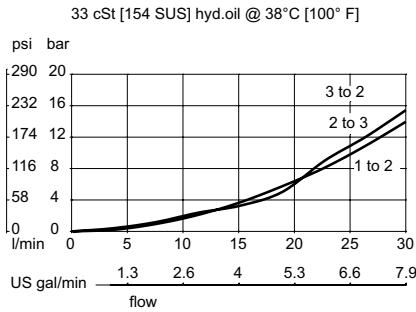
## 3-Way CP240-9

### OPERATION

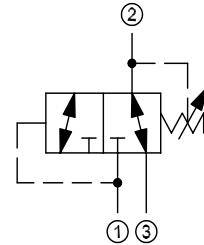
This valve drains 3 to 2 when the pressure at 1 is below the spring setting, and connects 1 to 2 when the pressure at 1 exceeds the spring setting. Note that pressure at 2 is additive to the spring setting.

### SPECIFICATIONS

#### Theoretical performance



### Schematic



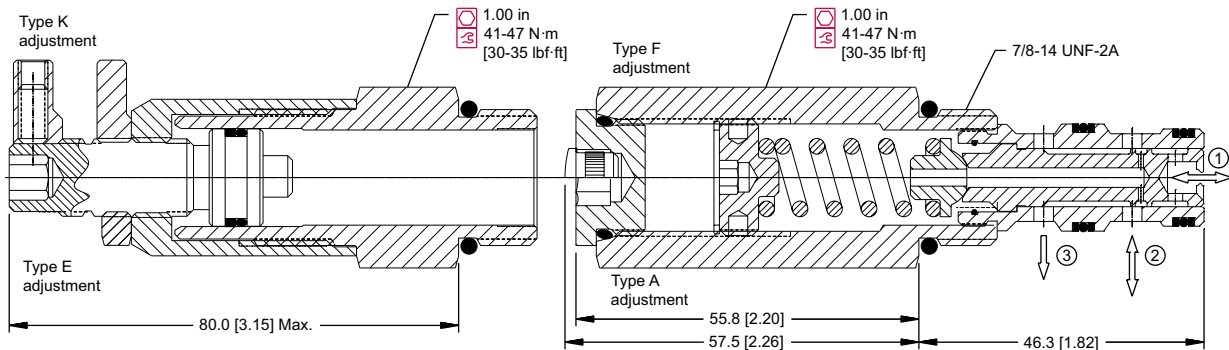
### Specifications

Rated pressure	210 bar [3000 psi]
Rated flow at 7 bar [100 psi]	20 l/min [5 US gal/min]
Weight	0.24 kg [0.52 lb]
Cavity	<b>SDC10-3</b>

### DIMENSIONS

mm [in]

#### Cross-sectional view



### ORDERING INFORMATION

#### CP240-9-B-6S-E-A-020

**Seals**  
Seal kit  
B = Buna-n 120009  
V = Viton 120010

**Housing and ports**  
0 = No Housing  
SE3B = Al, 3/8 BSP  
SE4B = Al, 1/2 BSP  
6S = Al, #6 SAE  
8S = Al, #8 SAE  
Other housings available

**Housing P/N**  
No Housing  
SDC10-3-SE-3B  
SDC10-3-SE-4B  
CP10-3-6S  
CP10-3-8S

**Crack Pressure**  
Code x 0.69 = bar  
[Code x 10 = psi]  
Example: 020 = 14 bar [200 psi]

**Pressure range**  
bar [psi]  
A = 6.9 - 27.6 [100 - 400]  
B = 20.7 - 55.2 [300 - 800]  
C = 20.7 - 96.5 [300 - 1400]  
D = 68.9 - 165.5 [1000 - 2400]

**Adjustment option**  
A = Internal  
E = External  
F = Tamper resistant  
K = Knob