



Sequence Valves Technical Information

2-Way, Normally Open

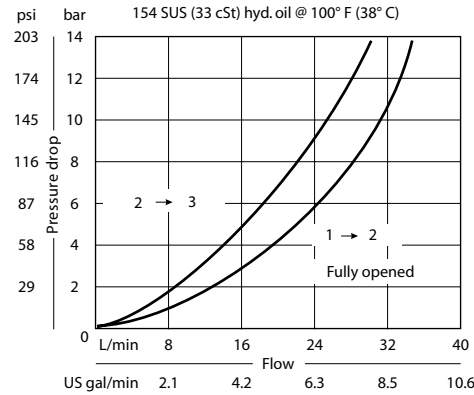
CP240-1

OPERATION

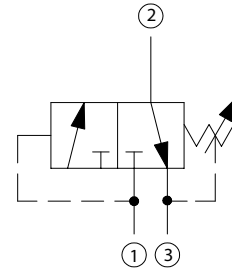
This valve is a direct acting, spool type sequence valve with internal pilot. This valve allows flow from 2 to 3 and blocks 1. At reaching the sequence pressure 1 is opened to 2.

SPECIFICATIONS

Theoretical performance



Schematic



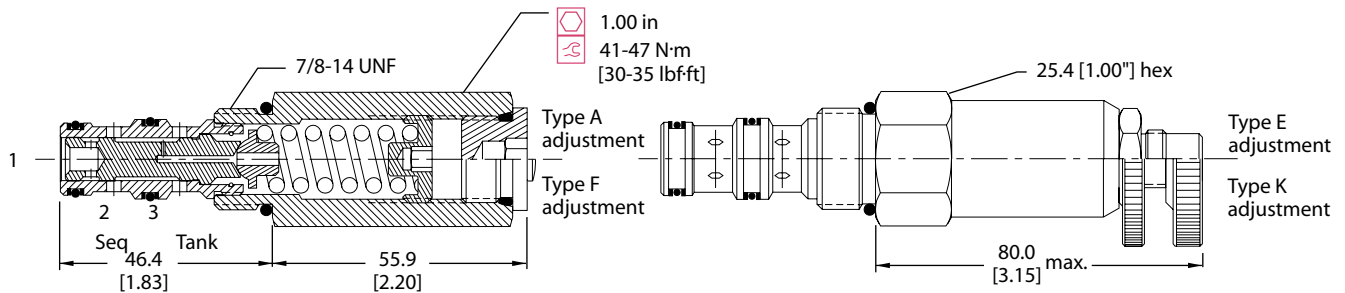
Specifications

Rated pressure	210 bar [3000 psi]
Rated flow at 7 bar [100 psi]	25 l/min [7 US gal/min]
Weight	0.25 kg [0.56 lb]
Cavity	SDC10-3

DIMENSIONS

mm [in]

Cross-sectional view



ORDERING INFORMATION

CP240 - 1 - B - 6S - A - C - 100

<p>Seals</p> <p>B = Buna-N V = Viton</p> <p>Housing and ports</p> <p>0 = No Housing SE3B = Al, 3/8 BSP SE4B = Al, 1/2 BSP 6S = Al, #6 SAE 8S = Al, #8 SAE Other housings available</p> <p>Adjustment option</p> <p>A = Internal E = External F = Tamper resistant K = Knob</p>	<p>Seal kit</p> <p>120009 120010</p> <p>Housing P/N</p> <p>No Housing SDC10-3-SE-3B SDC10-3-SE-4B CP10-3-6S CP10-3-8S</p>	<p>Crack pressure</p> <p>Code x 10 = psi Example: 100 = 1000 psi</p> <p>Pressure range</p> <table border="0"> <tr> <td>A =</td> <td>4-28</td> <td>[psi]</td> </tr> <tr> <td>Std. setting</td> <td>17</td> <td>[50-400]</td> </tr> <tr> <td>B =</td> <td>5-55</td> <td>[75-800]</td> </tr> <tr> <td>Std. setting</td> <td>28</td> <td>[400]</td> </tr> <tr> <td>C =</td> <td>7-97</td> <td>[100-1400]</td> </tr> <tr> <td>Std. setting</td> <td>69</td> <td>[1000]</td> </tr> <tr> <td>D =</td> <td>34-166</td> <td>[500-2400]</td> </tr> <tr> <td>Std. setting</td> <td>103</td> <td>[1500]</td> </tr> </table>	A =	4-28	[psi]	Std. setting	17	[50-400]	B =	5-55	[75-800]	Std. setting	28	[400]	C =	7-97	[100-1400]	Std. setting	69	[1000]	D =	34-166	[500-2400]	Std. setting	103	[1500]
A =	4-28	[psi]																								
Std. setting	17	[50-400]																								
B =	5-55	[75-800]																								
Std. setting	28	[400]																								
C =	7-97	[100-1400]																								
Std. setting	69	[1000]																								
D =	34-166	[500-2400]																								
Std. setting	103	[1500]																								