

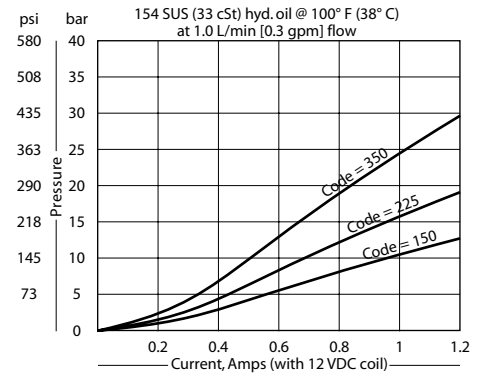
### OPERATION

This valve is a direct acting, proportional, pressure reducing/relieving valve. With zero current applied, the reduced pressure (port 1) is at a minimum.

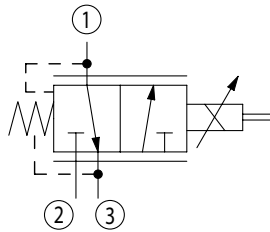
### SPECIFICATIONS

<b>Rated pressure</b>	34 bar [500 psi]
<b>Rated flow at 7 bar [100 psi]</b>	4 l/min [1 US gal/min]
<b>Weight</b>	0.27 kg [0.60 lb]
<b>Hysteresis</b>	10% maximum
<b>Threshold current</b>	0.1 A (12 VDC coil) 0.05 A (24 VDC coil)
<b>Maximum control current</b>	1 A (12 VDC coil) 0.5 A (24 VDC coil)
<b>Cavity</b>	<b>SDC08-3</b>
<b>Standard Coil</b>	<b>D08 16 Watt</b>
<b>Coil nut</b>	322399

### THEORETICAL PERFORMANCE



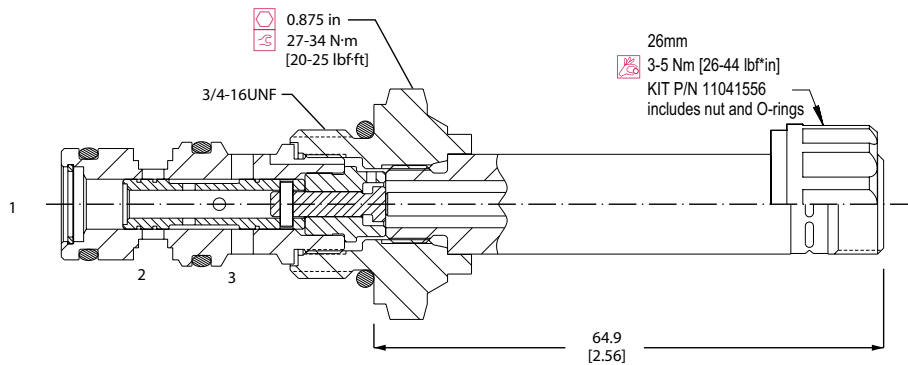
### SCHEMATIC



### DIMENSIONS

mm [in]

### Cross-sectional view



### ORDERING INFORMATION

#### CP558-24-B-4S-150-12D-H

#### Seals

B = Buna-N  
V = Viton

Seal Kit  
11016151  
120708

**Voltage**  
000 = No coil  
12D = 12 VDC coil  
24D = 24 VDC coil

#### Connector

0 = No connector  
H = DIN 43650  
L = Lead  
S = Spade  
AJ = Amp Junior  
M2 = Metripak 150  
Type 1  
DE = Deutsch

#### Housing and ports

00 = No Housing  
SE2B = AL, 1/4 BSP  
SE3B = AL, 3/8 BSP  
4S = AL, #4 SAE  
6S = AL, #6 SAE

#### Housing P/N

No Housing  
SDC08-3-SE-2B  
SDC08-3-SE-3B  
CP08-3-4S  
CP08-3-6S

#### Pressure Code

150 = 10.3 bar [150 psi]  
225 = 15.5 bar [225 psi]  
350 = 24.1 bar [350 psi]