

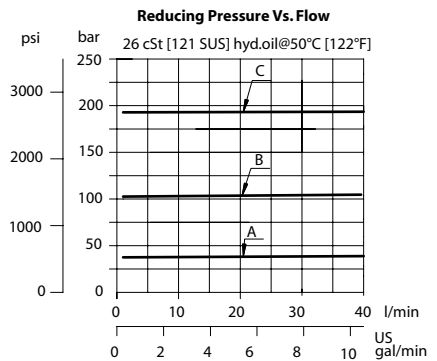
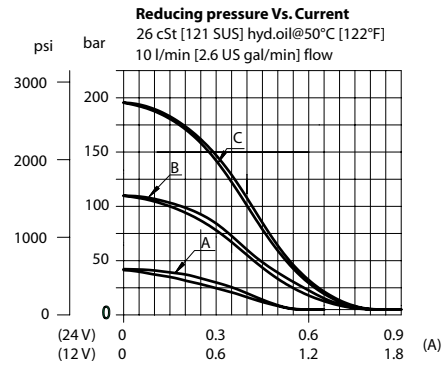
### OPERATION

This is a pilot-operated, proportional pressure-reducing/relieving valve. With zero current applied, the reduced pressure (port 1) is at the valve setting.

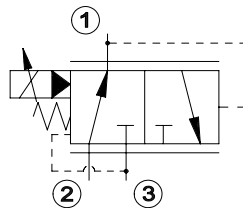
### SPECIFICATIONS

<b>Rated pressure</b>	250 bar (3625 psi)
<b>Rated flow at 7 bar [100 psi]</b>	18 l/min [5 US gal/min]
<b>Weight</b>	0.62 kg [1.37 lb]
<b>Hysteresis</b>	10% maximum
<b>Threshold current</b>	0 A (12 VDC coil) 0 A (24 VDC coil)
<b>Maximum control current</b>	1.4 A (12 VDC coil) 0.7 A (24 VDC coil)
<b>Cavity</b>	<b>SDC10-3</b>
<b>Standard Coil</b>	<b>M19P 22 Watt</b>

### THEORETICAL PERFORMANCE



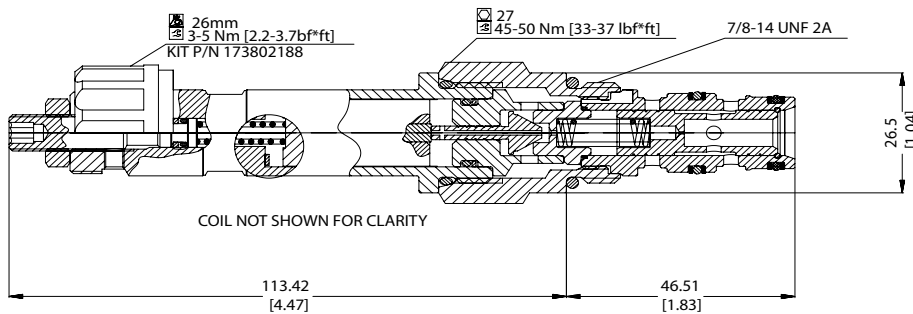
### SCHEMATIC



### DIMENSIONS

mm [in]

### Cross-sectional view



### ORDERING INFORMATION

### PPR10-PAC-40-A-12D-DN-B-00

Cracking pressure	_____	Housing and ports	_____	Housing nomenclature	_____
Code = Setting in Bar	_____	00 = Cartridge only	_____	No Body	_____
Std. setting	_____	6S = Al, #6 SAE	_____	CP10-3-6S	_____
40 = 40 bar setting (type A)	_____	8S = Al, #8 SAE	_____	CP10-3-8S	_____
100 = 100 bar setting (type B)	_____	SE3B = Al, 3/8" BSP	_____	SDC10-3-SE3B	_____
200 = 200 bar setting (type C)	_____	SE4B = Al, 1/2" BSP	_____	SDC10-3-SE4B	_____
Pressure range	_____	Other housing available	_____	Seals	_____
A= 20 - 60 bar [290 - 870 psi]	_____		_____	B = Buna-N	Seal kit
B= 70 - 150 bar [1015 - 2175 psi]	_____		_____	V = Viton	354004210
C= 160 - 210 bar [2320 - 3045 psi]	_____		_____		354003719
Coil voltage	_____	Coil termination	_____		
12D=12VDC	_____	00 = No coil, nut included	_____		
24D=24VDC	_____	AJ= AMP Junior	_____		
00=No Coil	_____	DE= Deutsch	_____		
	_____	DN= DIN 46650	_____		
	_____	FL= Flying leads(140mm lead length standard)	_____		