



Sequence Valves Technical Information

Unloading Valve, Differential Area, Pilot Operated

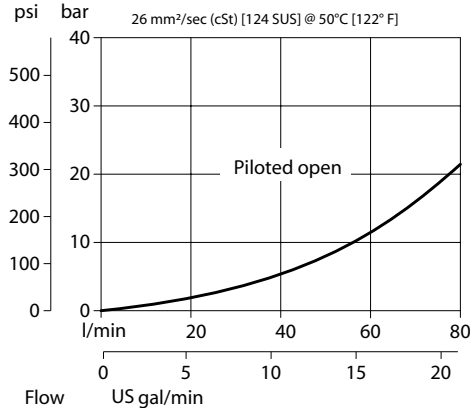
VDB 06-EN

OPERATION

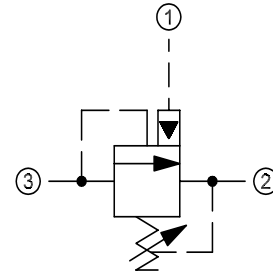
This is a pilot-operated unloading valve.

SPECIFICATIONS

Theoretical performance



Schematic



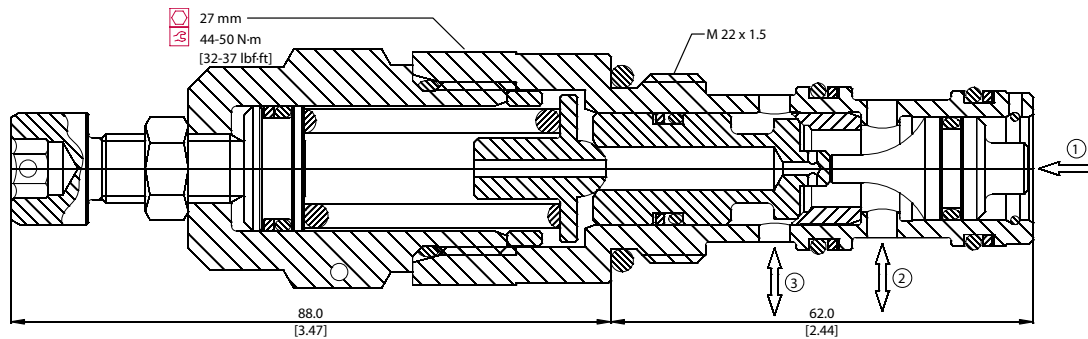
Specifications

Rated pressure	350 bar [5075 psi]
Rated flow	80 l/min [21 US gal/min]
Weight	0.21 kg [0.46 lb]
Cavity	NCS06/3

DIMENSIONS

mm [in]

Cross-sectional view



ORDERING INFORMATION

VDB 06-EN - 2 - A - SE3/8 - V

Setting range	Seals	Seal kit
1 = 25 - 140 bar [362 - 2031 psi]	V = Viton	230000110
2 = 70 - 210 bar [1015 - 3046 psi]	Omit = Buna-N	230000070
3 = 105 - 350 bar [1523 - 5076 psi]		
Pilot ratio	Housing and ports	Housing P/N
A = 7.1 : 1	00 = No Housing	No Housing
B = 4.1 : 1	SE3/8 = AL, 3/8 BSP	NCS06/3-SE-3/8
E = 1 : 1	SE1/2 = AL, 1/2 BSP	NCS06/3-SE-1/2
To order this valve with a specific factory setting, contact your Danfoss ICS representative	SE6S = AL, #6 SAE	NCS06/3-SE-6S
	SE8S = AL, #8 SAE	NCS06/3-SE-8S
	Other housings available	