



# Sequence Valves Technical Information

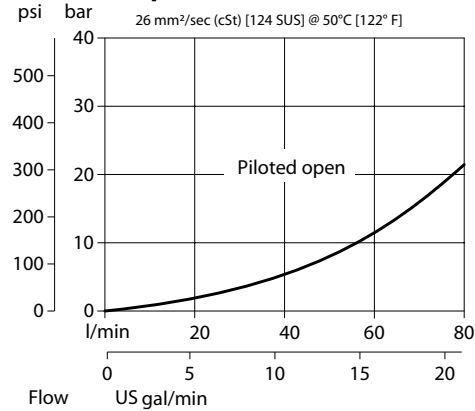
Unloading Valve, Differential Area, Pilot Operated, Atmospheric Vented  
VDB 06-CN

## OPERATION

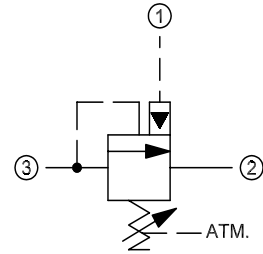
This is a pilot-operated, atmospherically-vented, unloading valve.

## SPECIFICATIONS

### Theoretical performance



## Schematic



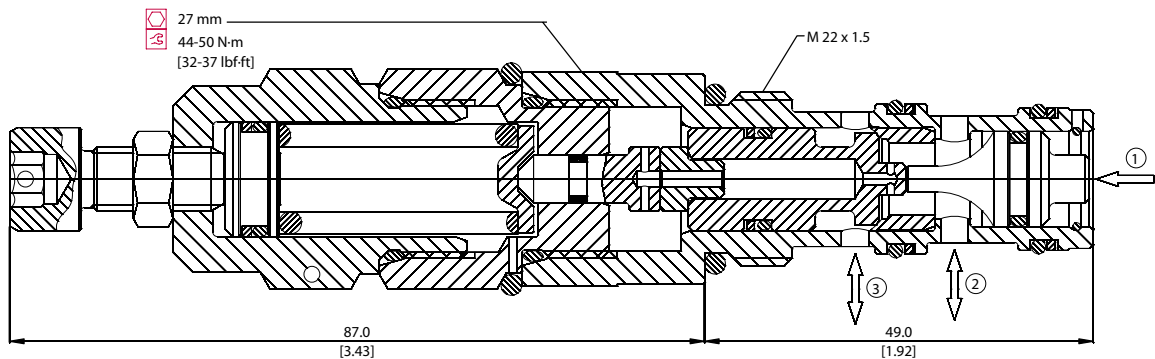
## Specifications

|                |                             |
|----------------|-----------------------------|
| Rated pressure | 350 bar [5075 psi]          |
| Rated flow     | 80 l/min<br>[21 US gal/min] |
| Weight         | 0.29 kg [0.64 lb]           |
| Cavity         | <b>NCS06/3</b>              |

## DIMENSIONS

mm [in]

### Cross-sectional view



## ORDERING INFORMATION

VDB 06-CN - 2 - A - 00 - V

Setting range

- 1 = 25 - 140 bar [362 - 2031 psi]
- 2 = 70 - 210 bar [1015 - 3046 psi]
- 3 = 105 - 350 bar [1523 - 5076 psi]

Pilot ratio

- A = 7.1 : 1
- B = 4.1 : 1
- E = 1 : 1

Seals

- V = Viton
- Omit = Buna-N

Seal kit

- 230000110
- 230000070

Housing and ports

- 00 = No Housing
- SE3/8 = AL, 3/8 BSP
- SE1/2 = AL, 1/2 BSP
- SE6S = AL, #6 SAE
- SE8S = AL, #8 SAE
- Other housings available

Housing P/N

- No Housing
- NCS06/3-SE-3/8
- NCS06/3-SE-1/2
- NCS06/3-SE-6S
- NCS06/3-SE-8S

To order this valve with a specific factory setting, contact your Danfoss ICS representative