



Relief Valves Technical Information

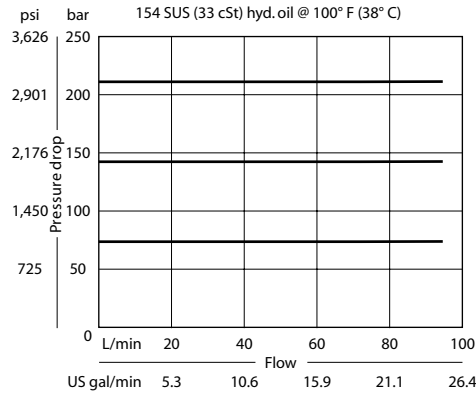
Cross-Over CP220-1

OPERATION

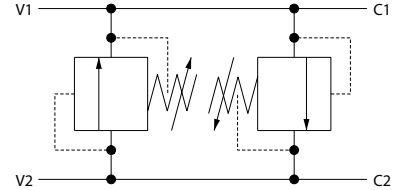
This valve is an inline cross relief. It uses two CP200-1 differential area relief valves.

SPECIFICATIONS

Theoretical performance



Schematic

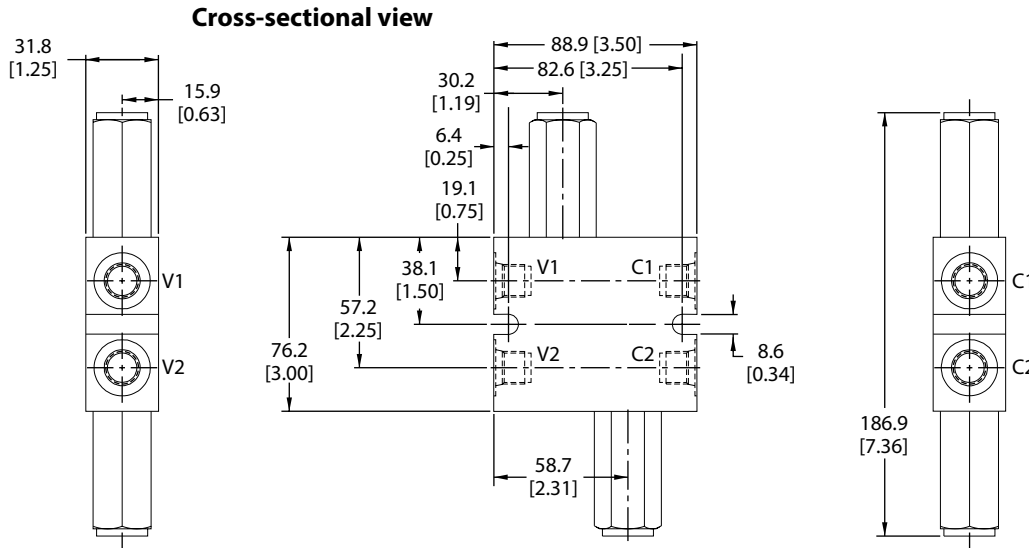


Specifications

Rated pressure	250 bar [3600 psi]
Rated flow	75 l/min [20 US gal/min]
Weight	0.82 kg [1.80 lb]
Cavity	none

DIMENSIONS

mm [in]



ORDERING INFORMATION

CP220 - 1 - 8S - B - 0 - A - C - 150

Housing and ports

3B	=	Al, 3/8 BSP	221743
4B	=	Al, 1/2 BSP	221744
6S	=	Al, #6 SAE	220216
8S	=	Al, #8 SAE	220217

Other housings available

Seals

B	=	Buna-N	Seal kit	120072
V	=	Viton	Seal kit	120161

Adjustment option

A	=	Internal
E	=	External
F	=	Tamper resistant
K	=	Knob

Crack pressure

Code x 10 = psi
Example: 150 = 1500 psi

Pressure range

A	=	7-55	[100-800]
Standard		28	[400]
B	=	17-138	[250-2000]
Standard		69	[1000]
C	=	41-248	[600-3600]
Standard		103	[1500]