



Check Valves Technical Information

In-line, Female Port

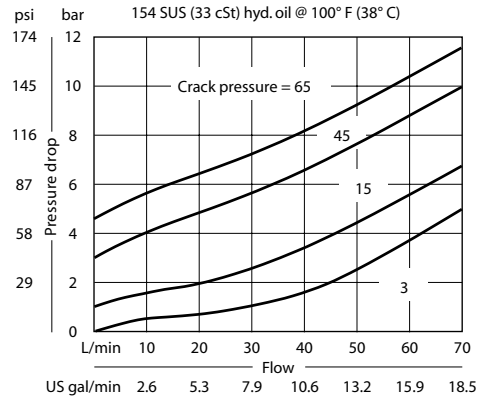
3C13-01

OPERATION

This valve allows free flow from 1 to 2 and blocks flow from 2 to 1.

SPECIFICATIONS

Theoretical performance



Schematic



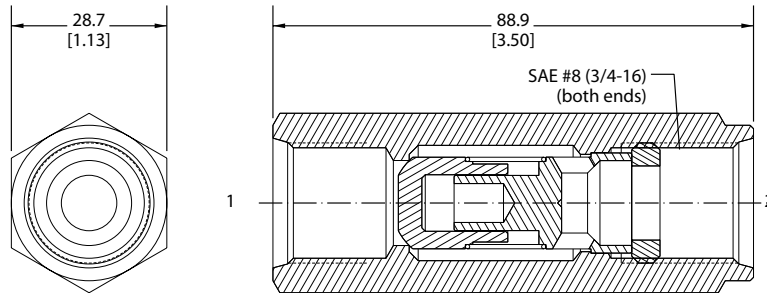
Specifications

Rated pressure	350 bar [5075 psi]
Rated flow at 7 bar	70 l/min
100 psi	[19 US gal/min]
Leakage	5 drops/min @ Rated pressure
Weight	0.31 kg [0.68 lb]
Cavity	none

DIMENSIONS

mm in

Cross-sectional view



ORDERING INFORMATION

3C13-01-8S-3

Crack pressure

3 = 0.2 bar [3 psi]
 15 = 1.0 bar [15 psi]
 45 = 3.1 bar [45 psi]
 65 = 4.5 bar [65 psi]

Port sizes

8S = SAE #8