



# Check Valves Technical Information

## In-line, Male Port

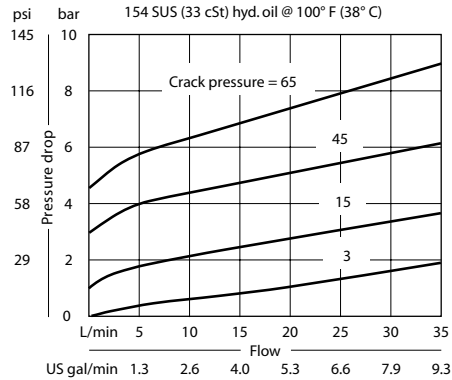
### 3CM12-01

### OPERATION

This valve allows free flow from 1 to 2 and blocks flow from 2 to 1.

### SPECIFICATIONS

#### Theoretical performance



#### Schematic



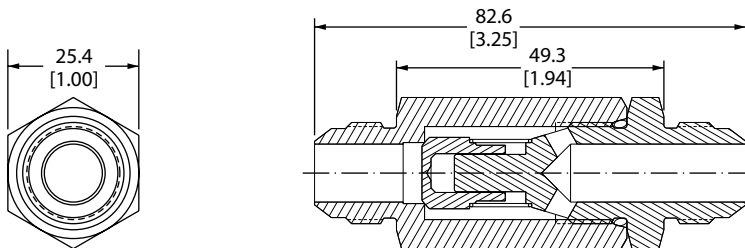
#### Specifications

Rated pressure	350 bar [5075 psi]
Rated flow at 7 bar	35 l/min
100 psi	[9 US gal/min]
Leakage	5 drops/min @ Rated pressure
Weight	0.23 kg [0.51 lb]
Cavity	none

### DIMENSIONS

mm in

#### Cross-sectional view



P102 595

### ORDERING INFORMATION

3CM12-01-B-8F-8F-03

