



Check Valves Technical Information

In-line, Male Port

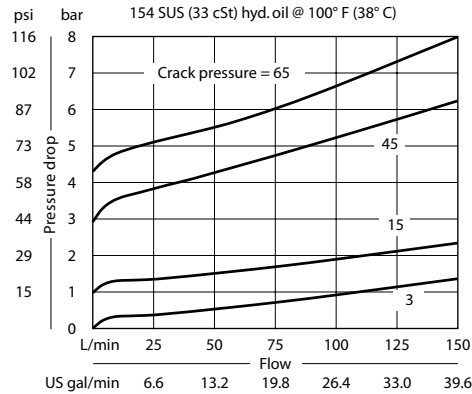
3CM15-01

OPERATION

This valve allows free flow from 1 to 2 and blocks flow from 2 to 1.

SPECIFICATIONS

Theoretical performance



Schematic



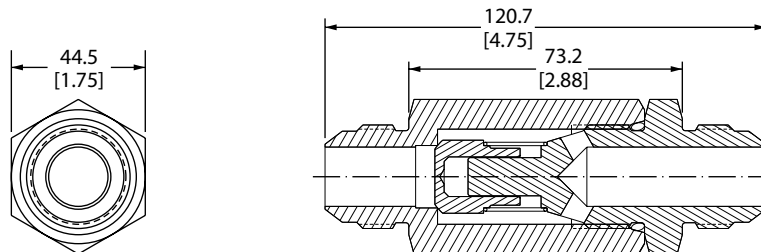
Specifications

Rated pressure	350 bar [5075 psi]
Rated flow at 7 bar	150 l/min [40 US gal/min]
100 psi	
Leakage	5 drops/min @ Rated pressure
Weight	0.85 kg [1.87 lb]
Cavity	none

DIMENSIONS

mm in

Cross-sectional view



ORDERING INFORMATION

3CM15-01-B-16F-16F-03

Crack pressure
 3 = 0.2 bar [3 psi]
 15 = 1.0 bar [15 psi]
 45 = 3.1 bar [45 psi]
 65 = 4.5 bar [65 psi]

Guide port
 16F = SAE #16, 37° flare

Body port
 16F = SAE #16, 37° flare

Seals
 B = Buna-N
 V = Viton

Seal kit
 720063
 720064