



Check Valves Technical Information

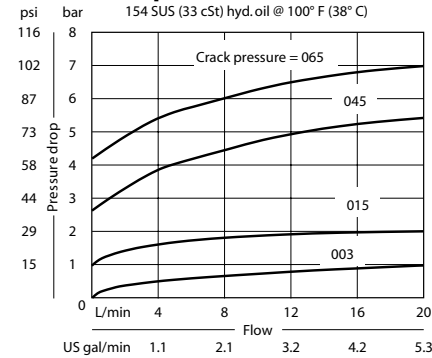
In-line, Female Port, with Orifice
2RN11-01

OPERATION

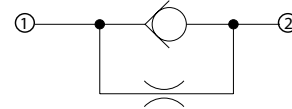
This valve allows free flow from 1 to 2 and restricted flow from 2 to 1.

SPECIFICATIONS

Theoretical performance



Schematic



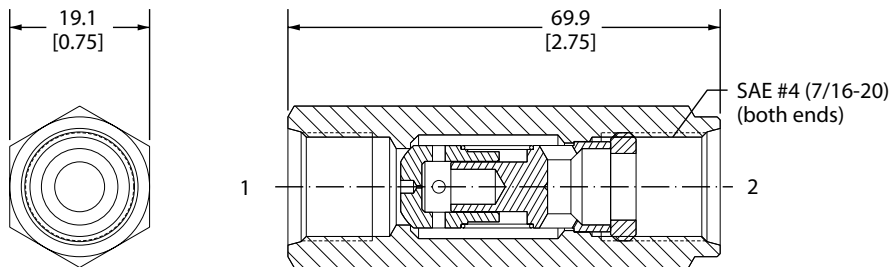
Specifications

Rated pressure	350 bar [5075 psi]
Rated flow at 7 bar	20 l/min
100 psi	[5 US gal/min]
Weight	0.11 kg [0.24 lb]
Cavity	none

DIMENSIONS

mm in

Cross-sectional view



ORDERING INFORMATION

2RN11-01-4S-003-021

Port sizes
4S = SAE #4

Orifice size

021 = 0.53 mm [0.021 in]
030 = 0.76 mm [0.030 in]

Crack pressure

003 = 0.2 bar [3 psi]
015 = 1.0 bar [15 psi]
045 = 3.1 bar [45 psi]
065 = 4.5 bar [65 psi]