



Pilot Operated Check Valves Technical Information

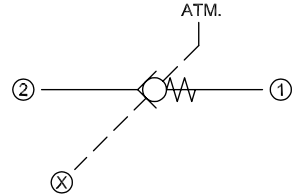
Reverse Pilot to Open with Vent

CP453-5

OPERATION

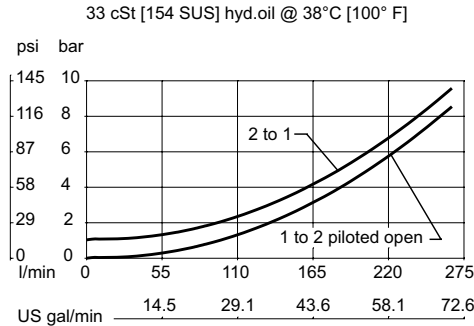
This is a pilot-to-open check valve with an external pilot connection.

Schematic



SPECIFICATIONS

Theoretical performance



Specifications

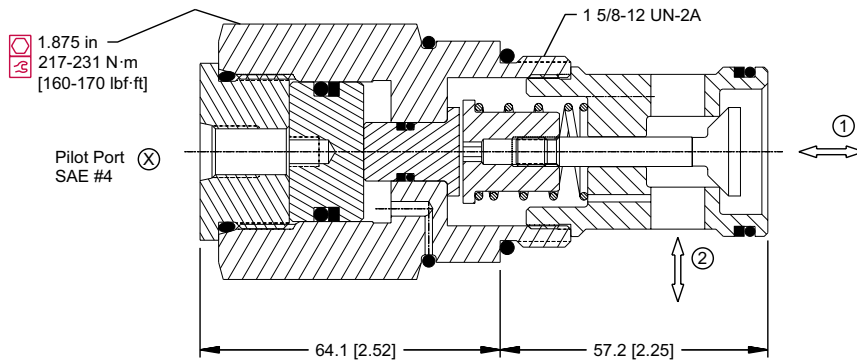
Rated pressure	350 bar [5075 psi]
Rated flow at 7 bar [100 psi]	250 l/min [66 US gal/min]
Leakage	6 drops/min @ Rated pressure
Weight	1.23 kg [2.71 lb]
Pilot ratio	4:1
Cavity	SDC20-2

Note: A piston seal requires a 4.5 bar [65 psi] or greater return spring.

DIMENSIONS

mm [in]

Cross-sectional view



ORDERING INFORMATION

CP453-5-B-16S-4-065

Seals	Seal kit		Crack Pressure
B = Buna-N V = Viton	120011 120012		bar [psi]
Housing and ports			065 = 4.3 65 100 = 6.9 100
0 = No Housing 8B = AL, 1 BSP 10B = AL, 1-1/4 BSP 16S = AL, #16 SAE 20S = AL, #20 SAE Other housings available	Housing P/N		Pilot ratio
	No Housing CP20-2-8B CP20-2-10B CP20-2-16S CP20-2-20S		4 = 4:1