



Pilot Operated Check Valves Technical Information

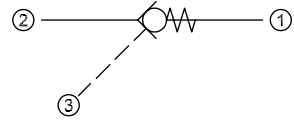
Reverse Pilot to Open

CP458-2

OPERATION

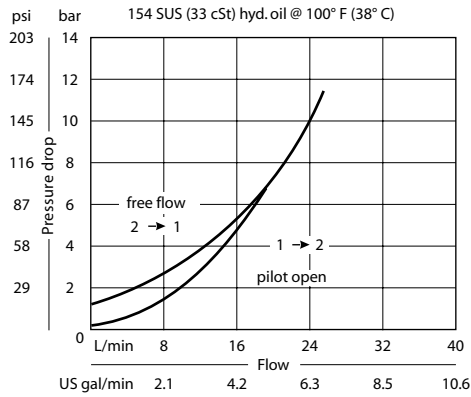
This valve is a pilot-to-open check valve.

Schematic



SPECIFICATIONS

Theoretical performance



Specifications

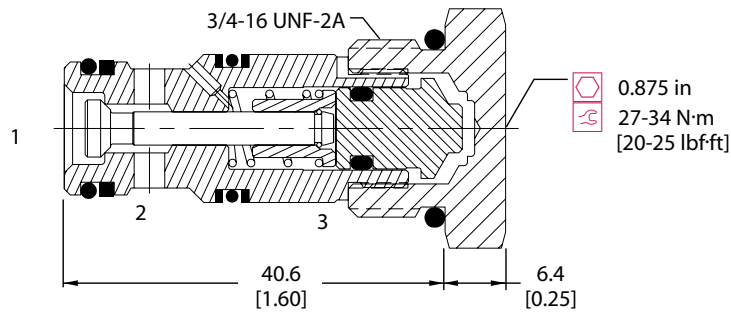
Rated pressure	210 bar [3000 psi]
Rated flow at 7 bar [100 psi]	20 l/min [5 US gal/min]
Leakage	6 drops/min @ Rated pressure
Weight	0.07 kg [0.15 lb]
Pilot ratio	2.8:1
Cavity	SDC08-3

Note: A piston seal requires a 4.5 bar [65 psi] or greater return spring.

DIMENSIONS

mm [in]

Cross-sectional view



ORDERING INFORMATION

CP458 - 2 - B - 6S - 065 - 0

Seals	Seal kit	Piston seals
B = Buna-N	120250	0 = No seals
V = Viton	120253	S = Seals included
Housing and ports	Housing P/N	Crack Pressure
0 = No Housing	No Housing	bar [psi]
SE2B = Al, 1/4 BSP	SDC08-3-SE-2B	065 = 4.48 [65]
SE3B = Al, 3/8 BSP	SDC08-3-SE-3B	
4S = Al, #4 SAE	CP08-3-4S	
6S = Al, #6 SAE	CP08-3-6S	
Other housings available		