



Pilot Operated Check Valves Technical Information

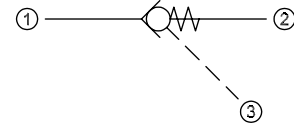
Pilot to Close

CP460-1

OPERATION

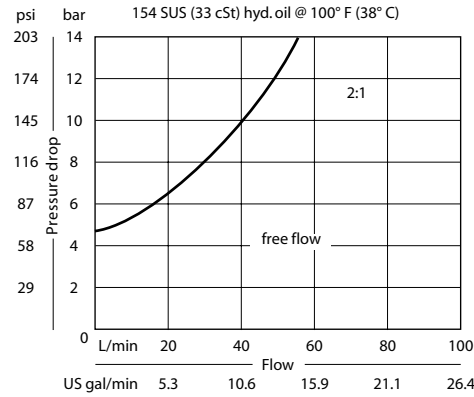
This valve is a pilot-to-close check valve.

Schematic



SPECIFICATIONS

Theoretical performance



Specifications

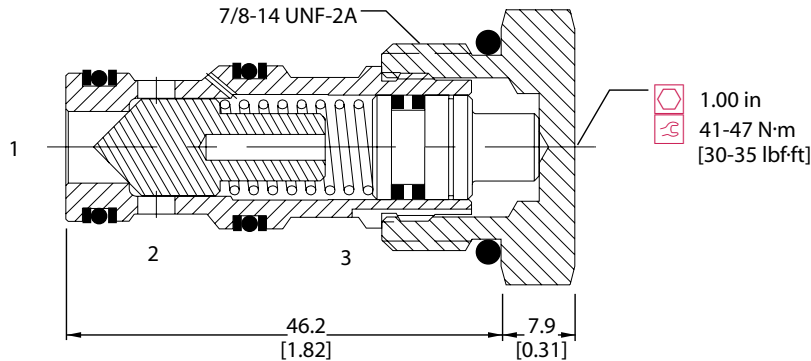
Rated pressure	210 bar [3000 psi]
Rated flow at 7 bar [100 psi]	22 l/min [5.8 US gal/min]
Leakage	6 drops/min @ Rated pressure
Weight	0.10 kg [0.21 lb]
Pilot ratio	2:1
Cavity	SDC10-3

Note: A piston seal requires a 4.5 bar [65 psi] or greater return spring.

DIMENSIONS

mm [in]

Cross-sectional view



ORDERING INFORMATION

CP460 - 1 - B - 8S - 2 - 065 - 0

Seals	Seal kit	Piston seals	0 = No seals	
B = Buna-N	120009	S = Seals included		
V = Viton	120010			
Housing and ports	Housing P/N	Crack Pressure	bar	[psi]
0 = No Housing	No Housing	065 = 4.48		[65]
SE3B = Al, 3/8 BSP	SDC10-3-SE-3B			
SE4B = Al, 1/2 BSP	SDC10-3-SE-4B			
6S = Al, #6 SAE	CP10-3-6S	Pilot ratio		
8S = Al, #8 SAE	CP10-3-8S	2 = 2:1		
Other housings available				