



# Pilot Operated Check Valves Technical Information

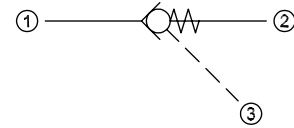
## Pilot to Close

### CP462-1

### OPERATION

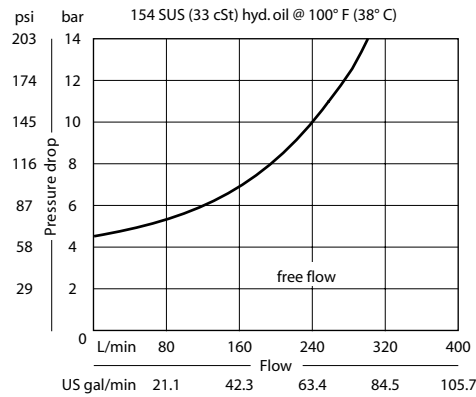
This valve is a pilot-to-close check valve.

### Schematic



### SPECIFICATIONS

#### Theoretical performance



#### Specifications

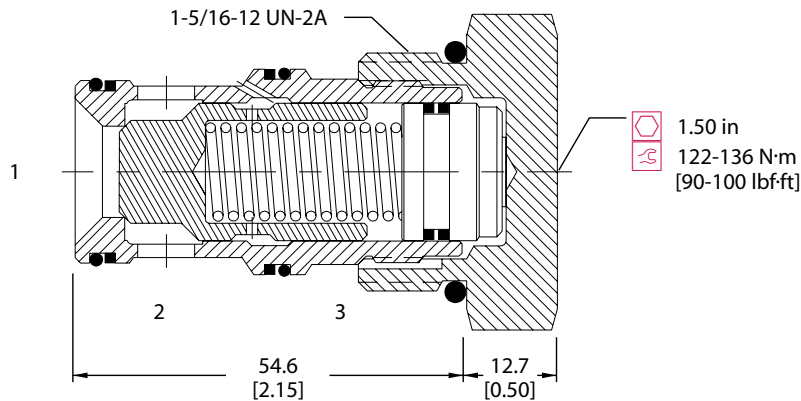
<b>Rated pressure</b>	210 bar [3000 psi]
<b>Rated flow at 7 bar [100 psi]</b>	190 l/min [50 US gal/min]
<b>Leakage</b>	6 drops/min @ Rated pressure
<b>Weight</b>	0.29 kg [0.64 lb]
<b>Pilot ratio</b>	2.3:1
<b>Cavity</b>	<b>SDC16-3S</b>

Note: A piston seal requires a 4.5 bar [65 psi] or greater return spring.

### DIMENSIONS

mm [in]

#### Cross-sectional view



### ORDERING INFORMATION

## CP462-1 - B - 16S - 065 - 0

#### Seal Option

Code	Seal Material	Seal kit
<b>B</b>	Buna	120033
<b>V</b>	Viton	120034

#### Piston Seals

Code	
<b>0</b>	No seals
<b>S</b>	Seals Included

Housings & Ports	Housing P/N
<b>0:</b> Cartridge Only	No Housing
<b>6B:</b> 3/4 BSP, AL	CP16-3S-6B/2B
<b>8B:</b> 1 BSP, AL	CP16-3S-8B/2B
<b>12S:</b> #12 SAE, AL	CP16-3S-12S/4S
<b>16S:</b> #16 SAE, AL	CP16-3S-16S/4S

Other Housings available

#### Crack Pressure

Code	bar	[psi]
<b>065</b>	4.48	[65]