



Pilot Operated Check Valves Technical Information

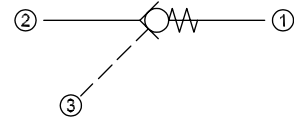
Reverse Pilot to Open

MC10-RO

OPERATION

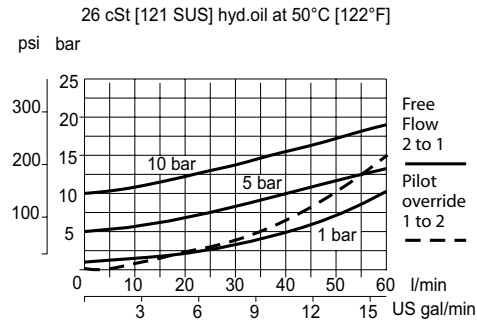
This is a pilot-to-open check valve.

Schematic



SPECIFICATIONS

Theoretical performance



Specifications

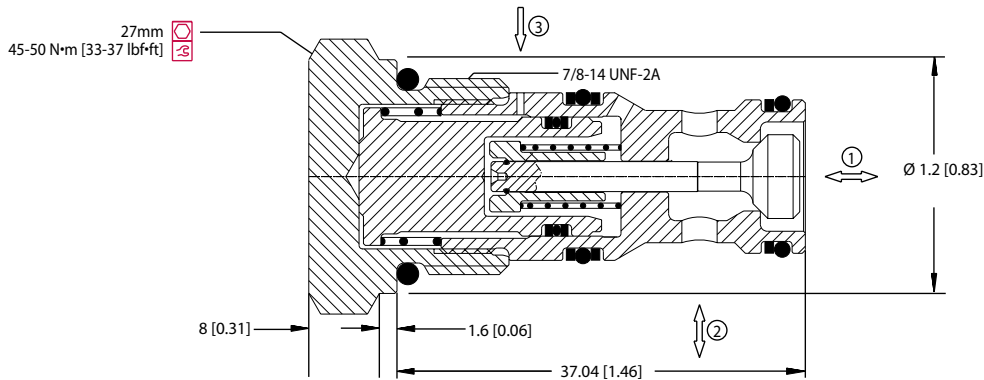
Rated pressure	250 bar [3600 psi]
Rated flow at 7 bar [100 psi]	45 l/min [12 US gal/min]
Leakage	6 drops/min @ Rated pressure
Weight	0.12 kg [0.26 lb]
Pilot ratio	3.0:1
Cavity	SDC10-3S

Note: A piston seal requires a 4.5 bar [65 psi] or greater return spring.

DIMENSIONS

mm [in]

Cross-sectional view



P103 753

ORDERING INFORMATION

MC10-RO-5-OR-A-B-6S

Crack Pressure
1 = 1 bar [15 psi]
5 = 5 bar [73 psi]
10 = 10 bar [145 psi]

Piston seals
Omit = No seal
OR = Seals included

Housing and ports

00 = No Housing
SE3B = Al, 3/8 BSP
SE4B = Al, 1/2 BSP
6S = Al, #6 SAE
8S = Al, #8 SAE
Other housings available

Housing P/N

No Housing
SDC10-3S-SE-3B
SDC10-3S-SE-4B
SDC10-3S-6S/6S
SDC10-3S-8S/6S

Seals Seal kit
B = Buna-N 35401419
V = Viton 35401519