



# Pilot Operated Check Valves Technical Information

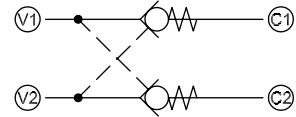
## Catalog HIC

### CP410-1

### OPERATION

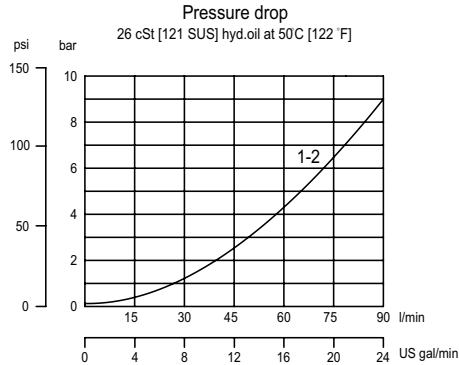
This is a dual pilot operated check valve, which uses two CV10-NP check valves.

### Schematic



### SPECIFICATIONS

#### Theoretical performance



#### Specifications

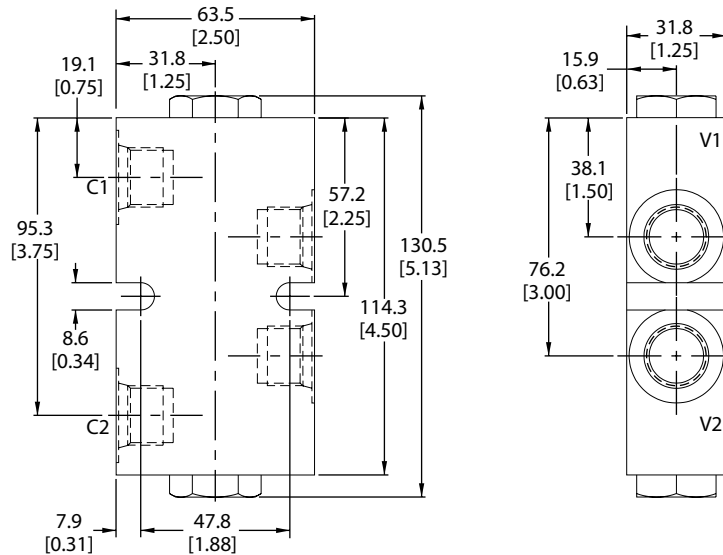
<b>Rated pressure</b>	210 bar [3000 psi]
<b>Rated flow at 7 bar [100 psi]</b>	80 l/min [21.1 US gal/min]
<b>Leakage</b>	6 drops/min @ Rated pressure
<b>Weight</b>	0.67 kg [1.48 lb]
<b>Pilot ratio</b>	4:1
<b>Cavity</b>	none

Note: A piston seal requires a 4.5 bar [65 psi] or greater return spring.

### DIMENSIONS

mm [in]

#### Cross-sectional view



### ORDERING INFORMATION

CP410 - 1 - B - 8S - 0 - 065

#### Seals

	Seal kit	W/ piston seals
B = Buna-N	120072	120176
V = Viton	120161	120177

#### Crack Pressure

	bar	[psi]
065	= 4.50	[65]

#### Housing and ports

	Housing P/N
6S = Aluminum, #6 SAE	220099
8S = Aluminum, #8 SAE	220100
3B = Al, 3/8 BSP	221794
4B = Al, 1/2 BSP	221652

#### Piston seals

0 = No seals  
S = Seals included