



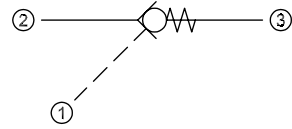
Pilot Operated Check Valves Technical Information

Pilot to Open CP450-1

OPERATION

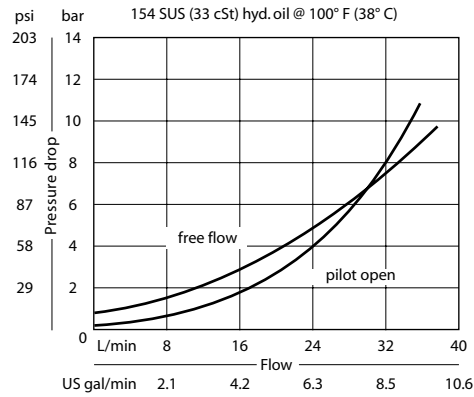
This valve is a pilot-to-open check valve.

Schematic



SPECIFICATIONS

Theoretical performance



Specifications

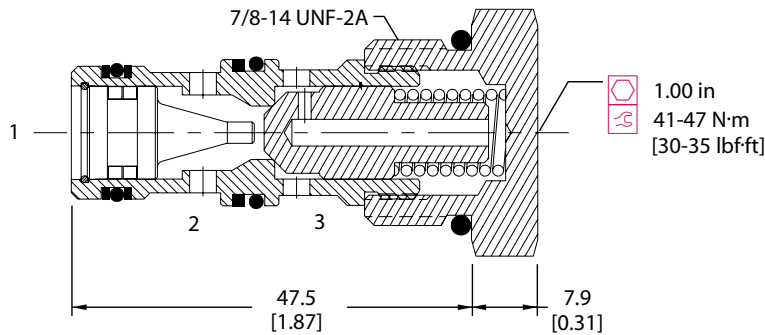
Rated pressure	240 bar [3480 psi]
Rated flow at 7 bar [100 psi]	30 l/min [8 US gal/min]
Leakage	6 drops/min @ Rated pressure
Weight	0.09 kg [0.20 lb]
Pilot ratio	3.0:1
Cavity	SDC10-3

Note: A piston seal requires a 4.5 bar [65 psi] or greater return spring.

DIMENSIONS

mm [in]

Cross-sectional view



ORDERING INFORMATION

