



Logic Elements Technical Information

Spool Type CP700-2

OPERATION

The CP700-2 is a 10-size, normally closed, vent-to-open, spring-biased differential-sensing logic element. It will modulate flow from 1 to 2 based on the spring control pressure, inlet pressure at port 1, and pilot pressure at port 3.

APPLICATION

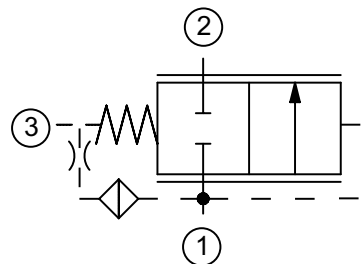
Common applications include: pump unloading, pilot-operated relief valve (mechanical or proportional), sequence valve and selector circuit. Effective use of logic elements is a key to designing cost-effective circuits, and is limited only by the imagination of the designer.



SPECIFICATION

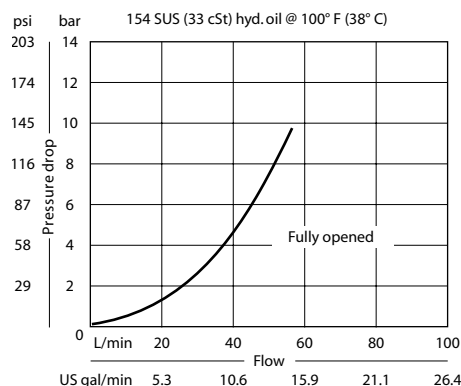
Rated pressure	210 bar [3045 psi]
Rated flow at 7 bar [100 psi]	50 l/min [13 US gal/min]
Weight	0.13 kg [0.28 lb]
Cavity	SDC10-3

SCHEMATIC



PERFORMANCE CURVE

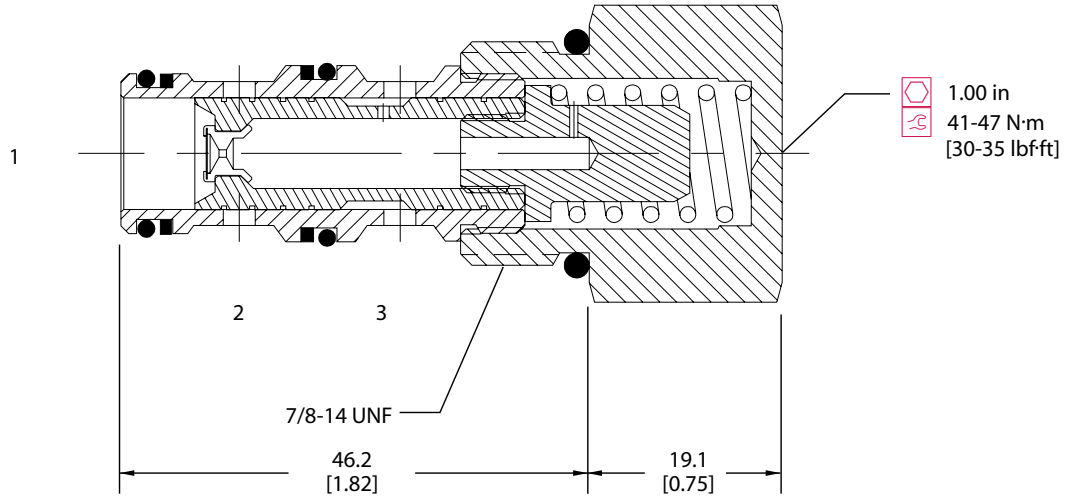
Theoretical performance



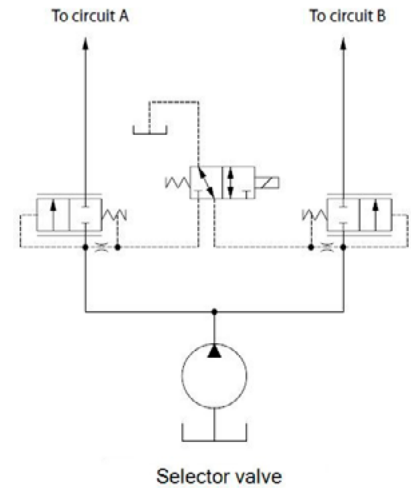
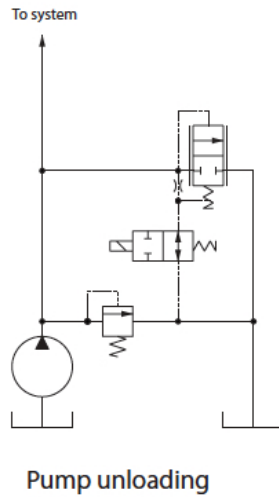
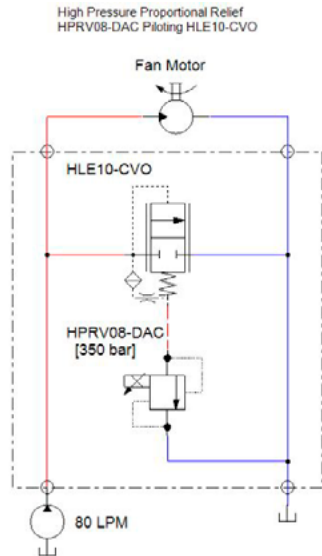
DIMENSION

mm [in]

Cross-sectional view



EXAMPLE CIRCUITS



ORDERING INFORMATION

CP700 - 2 - B - 8S 080

Seals	Seal kit	Differential Control Pressure
B = Buna-N	120027	bar [psi]
V = Viton	120028	040 = 2.8 [40]
Housing and ports	Housing P/N	080 = 5.5 [80]
0 = No Housing	No Housing	110 = 7.6 [110]
SE3B = AL, 3/8 BSP	SDC10-3-SE-3B	150 = 10.3 [150]
SE4B = AL, 1/2 BSP	SDC10-3-SE-4B	190 = 11.7 [190]
6S = AL, #6 SAE	CP10-3-6S	
8S = AL, #8 SAE	CP10-3-8S	
Other housings available		