



OPERATION

The CP702-2 is a 16-size, normally closed, vent-to-open, spring-biased differential-sensing logic element. It will modulate flow from 1 to 2 based on the spring control pressure, inlet pressure at port 1, and pilot pressure at port 3.

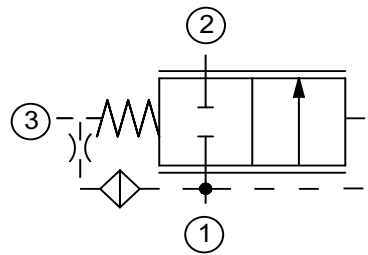
APPLICATION

Common applications include: pump unloading, pilot-operated relief valve (mechanical or proportional), sequence valve and selector circuit. Effective use of logic elements is a key to designing cost-effective circuits, and is limited only by the imagination of the designer.

SPECIFICATION

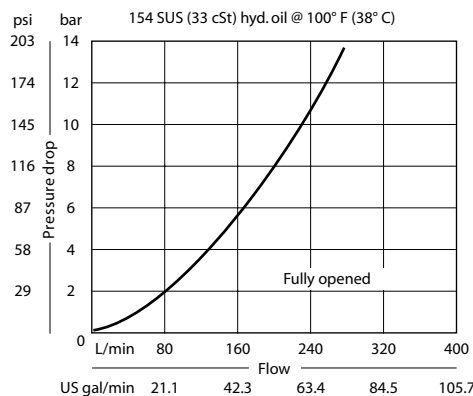
Rated pressure	210 bar [3045 psi]
Rated flow at 7 bar [100 psi]	190 l/min [50 US gal/min]
Weight	0.38 kg [0.83 lb]
Cavity	SDC16-3S

SCHEMATIC



PERFORMANCE CURVE

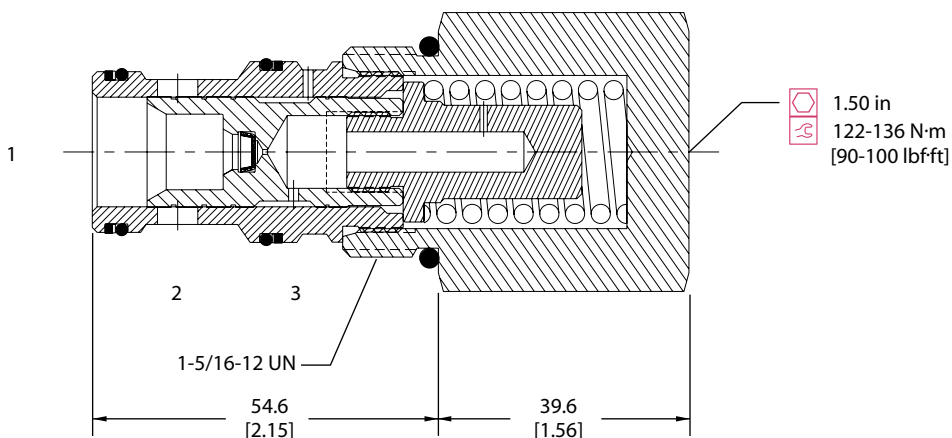
Theoretical performance



DIMENSION

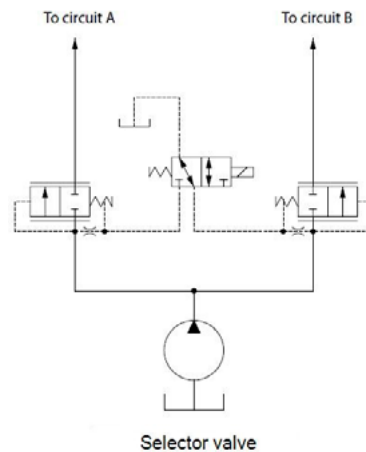
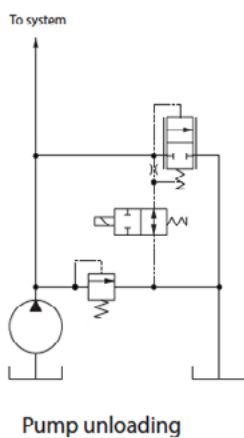
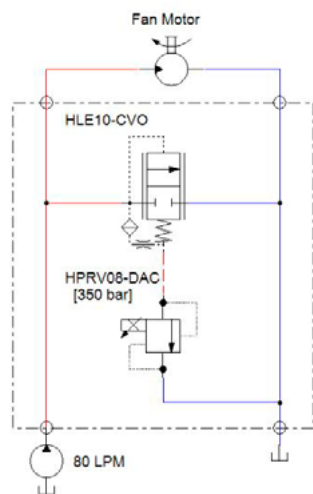
mm [in]

Cross-sectional view



EXAMPLE CIRCUITS

High Pressure Proportional Relief
HPRV08-DAC Piloting HLE10-CVO



ORDERING INFORMATION

CP702 - 2 - B - 16S - 080

Seals	Seal kit	Differential Control Pressure
B = Buna-N	120033	bar [psi]
V = Viton	120034	040 = 2.8 [40]
Housing and ports	Housing P/N	080 = 5.5 [80]
0 = No housing	No housing	110 = 7.6 [110]
6B = AL, 3/4 BSP	CP16-3S-6B/2B = 1/4 BSP	150 = 10.3 [150]
8B = AL, 1 BSP	CP16-3S-8B/2B = 1/4 BSP	170 = 11.7 [170]
12S = AL, #12 SAE	CP16-3S-12S/4S = #4 SAE	
16S = AL, #16 SAE	CP16-3S-12S/4S = #4 SAE	
Other housings available		