



Directional Control Valves Technical Information

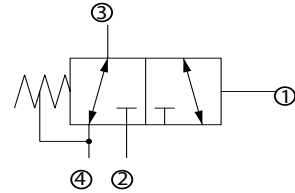
2-Position, 3-Way, Hydraulic Vent

CP722-11

OPERATION

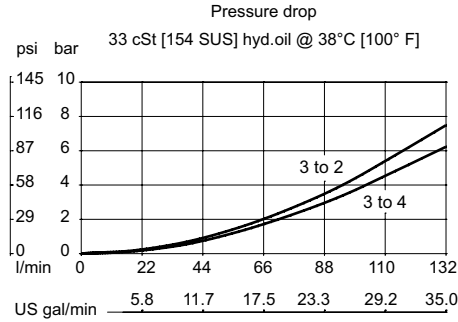
This valve is a 3-way hydraulically-piloted spool.

Schematic



SPECIFICATIONS

Theoretical performance



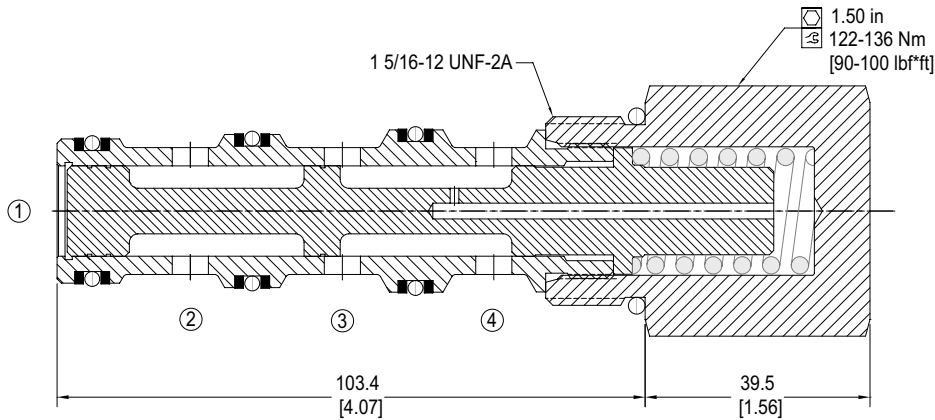
Specifications

Rated pressure	450 bar [6500 psi]
Rated flow at 7 bar [100 psi]	125 l/min [33 US gal/min]
Leakage	164 cm ³ /min [10 in ³ /min] @ Oil temperature range -20° to 80°C [-4° to 180°F]
Weight	0.61 kg [1.34 lb]
Cavity	CP16-4

DIMENSIONS

mm [in]

Cross-sectional view



ORDERING INFORMATION

