



# Directional Control Valves Technical Information

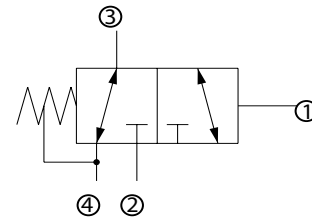
## 2-Position, 3-Way, Hydraulic Vent

### CP722-5

#### OPERATION

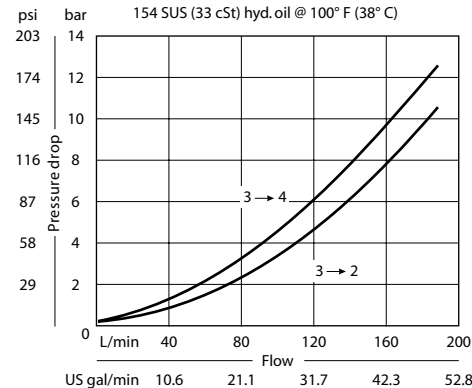
This valve is a 3-way hydraulically piloted spool.

#### Schematic



#### SPECIFICATIONS

##### Theoretical performance



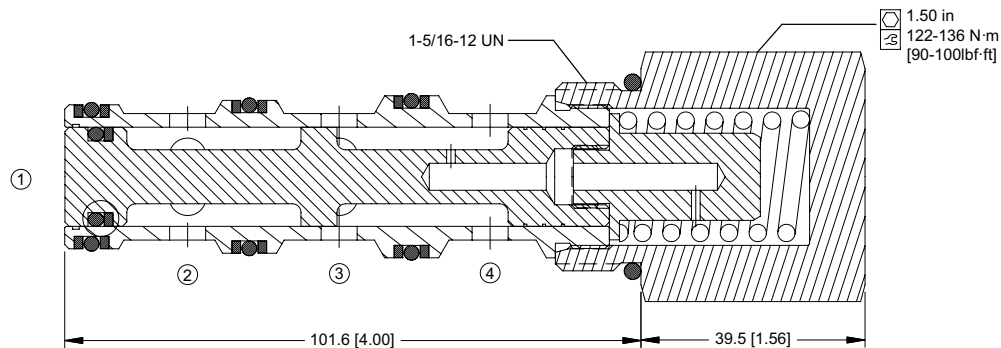
##### Specifications

Rated pressure	210 bar [3000 psi]
Rated flow at 7 bar [100 psi]	130 l/min [34 US gal/min]
Weight	0.61 kg [1.34 lb]
Cavity	CP16-4

#### DIMENSIONS

mm [in]

##### Cross-sectional view



#### ORDERING INFORMATION

CP722 - 5 - B - 16S - 150 - S3

##### Seals

B = Buna-N  
V = Viton

##### Housing and ports

0 = No Housing  
6B = AL, 3/4 BSP  
8B = AL, 1 BSP  
12S = AL, #12 SAE  
16S = AL, #16 SAE  
Other housings available

Seal kit  
120025  
120026

##### Housing P/N

No Housing  
CP16-4-6B  
CP16-4-8B  
CP16-4-12S  
CP16-4-16S

##### Spool seals

S3 = No seal  
S4 = Seal at bottom of spool

##### Shift pressure

bar [psi]  
040 = 2.8 [40]  
080 = 5.5 [80]  
150 = 10.3 [150]

shift pressure assumes no seals