



# Directional Control Valves Technical Information

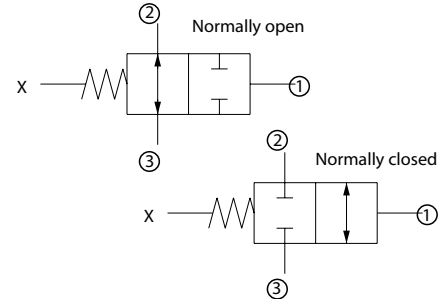
## 2-Position, 2-Way, External Pilot

### CP713-2

#### OPERATION

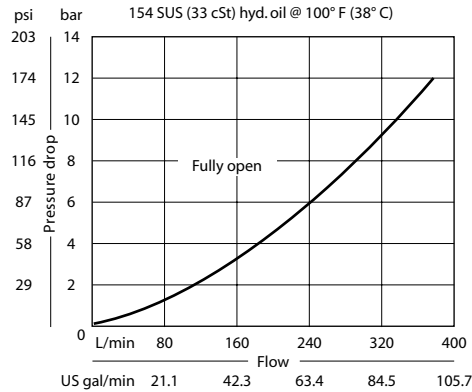
This valve is a 2-way double hydraulically piloted spool.

#### Schematic



#### SPECIFICATIONS

##### Theoretical performance



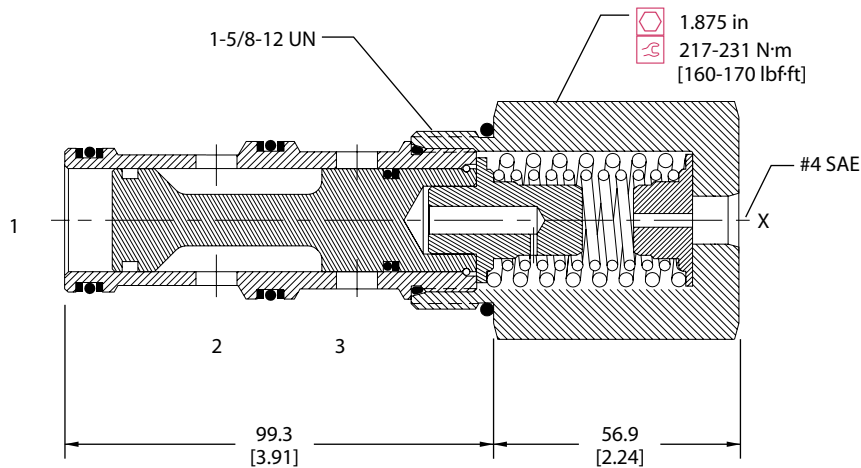
#### Specifications

Rated pressure	210 bar [3000 psi]
Rated flow at 7 bar [100 psi]	265 l/min [70 US gal/min]
Weight	1.26 kg [2.78 lb]
Cavity	<b>SDC20-3</b>

#### DIMENSIONS

mm [in]

#### Cross-sectional view



#### ORDERING INFORMATION

**CP713 - 2 - B - 20S - C - 150 - S1**

<b>Seals</b>	Seal kit 120200 120201	<b>Spool seals</b>	S1 = Seal at top of spool S2 = Seals at top and bottom of spool S3 = No seals S4 = Seal at bottom of spool
B = Buna-N V = Viton		<b>Shift pressure</b>	bar [psi] 050 = 3.5 [50] 080 = 5.5 [80] 100 = 6.9 [100] 130 = 9.0 [130] 150 = 10.3 [150] shift pressure assumes no seals
<b>Housing and ports</b>	<b>Housing P/N</b>		
0 = No Housing 8B = AL, 1 BSP 10B = AL, 1-1/4 BSP 16S = AL, #16 SAE 20S = AL, #20 SAE Other housings available	No Housing CP20-3-8B CP20-3-10B CP20-3-16S CP20-3-20S		
<b>Configuration</b>			
0 = Normally open C = Normally closed			