



Counterbalance Valves Technical Information

Dual Counterbalance - Atmospheric Vent

VCB06-CN-DL

OPERATION

The VCB06-CN-DL is a dual counterbalance HIC, 6-size metric, nose to nose design with atmospheric vent. This catalog HIC allows free flow from the V ports to the C ports and blocks flow in the reverse direction until the relief setting is reached, or until adequate pilot pressure has been applied to the opposite V port.



APPLICATIONS

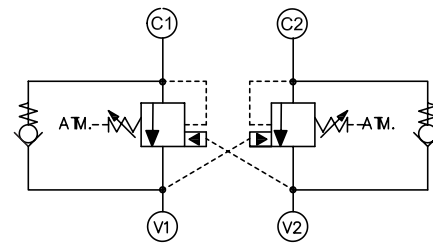
Atmospherically vented HIC's are applied when it is not practical to connect a separate vent line to the tank. Use dual counterbalance HIC's for controlling loads in bidirectional motion such as wheel motor applications or for cylinders going over center.

SPECIFICATIONS

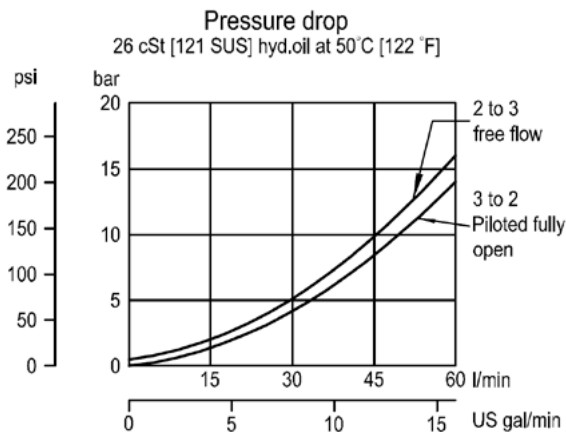
Rated pressure	350 bar [5075 psi]*
Rated flow at 22 bar [319 psi]	60 l/min [16 US gal/min]
Leakage	10 drops/min @ at 70% of crack pressure
Weight	0.96 kg [2.15 lb]
Pilot ratio	4.1:1, 7.1:1
Cavity	CIB

* 350 bar with steel housing
210 bar with aluminum housing

SCHEMATIC



PERFORMANCE





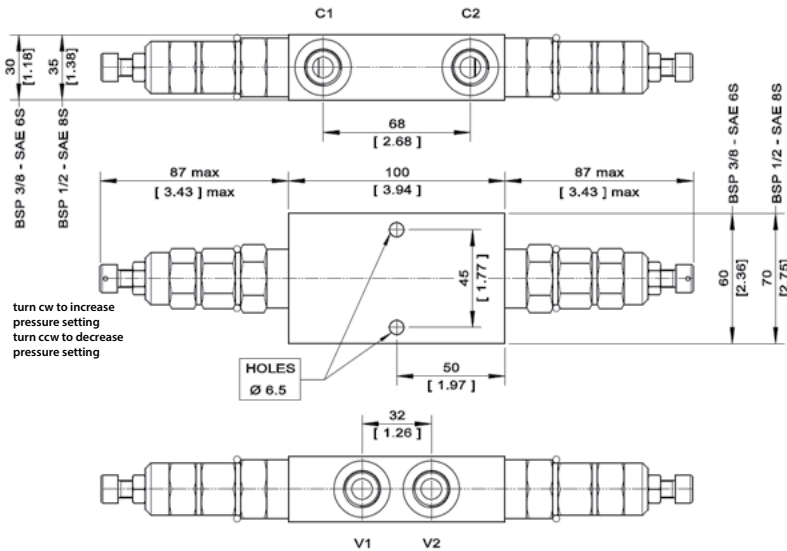
Counterbalance Valves Technical Information

Dual Counterbalance - Atmospheric Vent

VCB06-CN-DL

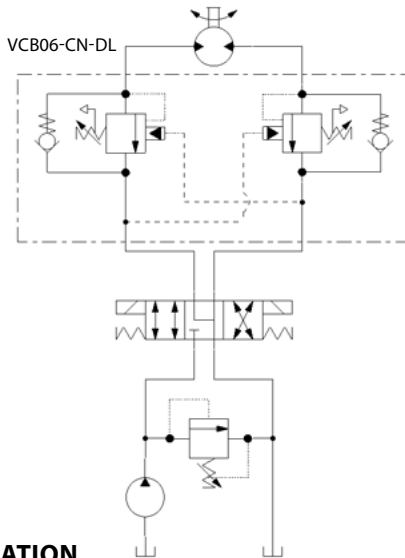
DIMENSIONS

mm [in]

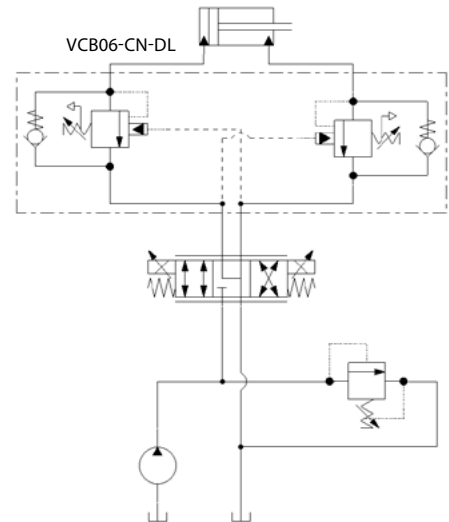


EXAMPLE CIRCUITS

Bi-directional Motion Control



Counterbalance - Double Actuator



ORDERING INFORMATION

VCB06 - CN - 2 - A - DL4B - B XXX

VCB06-CN:
Dual Counterbalance Valve,
Pilot Port 1, 6 size (metric),
internal adjustment,
atmospheric vent

Code	Pilot Ratio
A	7.1:1
B	4.1:1

Code	Pressure Range bar [psi]
1	25-140 (363-2030)
2	70 - 210 (1015-3045)
3	105 - 350 (1523-5075)

Code	Seal Material
B	Buna-N
V	Viton

Housing & Ports	Housing P/N
DL3B: AL, 3/8 BSP	NCS06-3-DL3B
DL4B: AL, 1/2 BSP	NCS06-3-DL4B
DL6S: AL, #6 SAE	NCS06-3-DL6S
DL8S: AL, #8 SAE	NCS06-3-DL8S

Crack Pressure Setting [in bar]

XXX: No factory setting / no stamping

For customer specified settings,
enter value in bar (Example 70 bar = 70;
125 bar = 125 etc.)