



# Flow Control Valves Technical Information

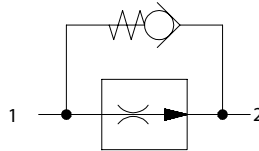
## In-line CP9014-1

### OPERATION

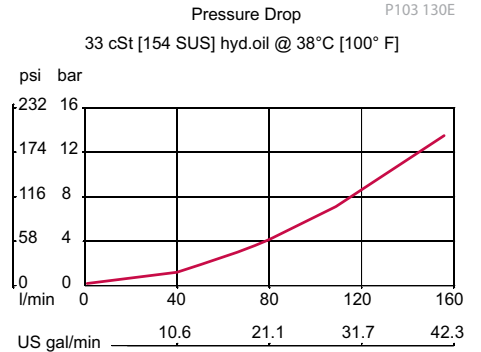
This is an in-line restrictive type flow control valve with free reverse flow.

### SPECIFICATIONS

#### Schematic

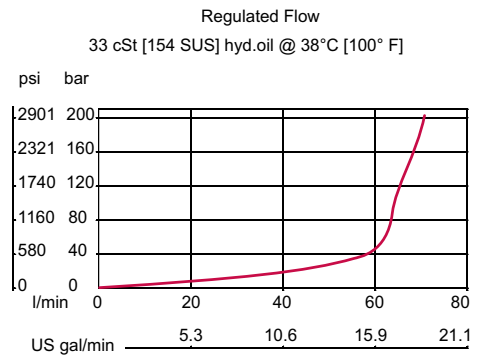


#### Theoretical performance



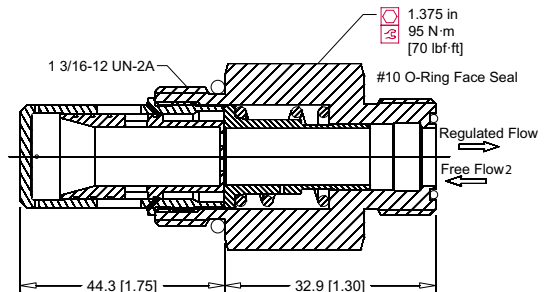
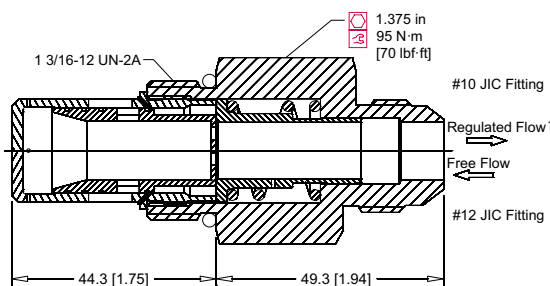
#### Specifications

<b>Pressure rating</b>	207 bar [3000 psi]
<b>Rated Free Flow at 7 bar [100 psi]</b>	113 l/min [30 US gal/min]
<b>Max regulated flow</b>	106 l/min [28 US gal/min]
<b>Cavity</b>	Modified SAE #14 port



### DIMENSIONS

mm [in]



### ORDERING INFORMATION

**Seals**  
B = Buna-N  
V = Viton

**Seal kit**  
720025  
720363

#### CP9014-1-B-10-24

**Flow Setting**

Flow Setting (l/min)	Flow Setting (USgal/min)
18	68.1
24	90.8
28	106.0

Consult factory for complete list of flows.

#### Connection (Port2)

10 = #10SAE37° JIC Fitting	7/8-14UNC-2A
12 = #12SAE37° JIC Fitting	11/16-12UN-2A
FS10 = #10SAEO-Ring Face Seal	17/16-12UN-2A