



# Flow Control Valves Technical Information

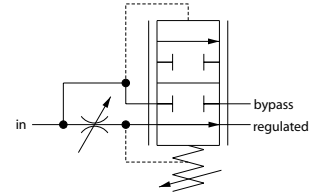
## Catalog HIC

### 2F94-01

### OPERATION

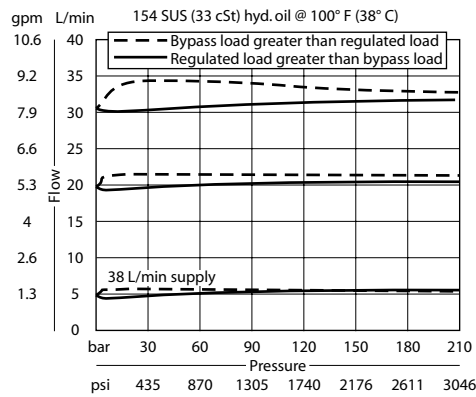
This valve is an adjustable, priority-type, pressure compensated flow control valve.

### Schematic



### SPECIFICATIONS

#### Theoretical performance



P102 682

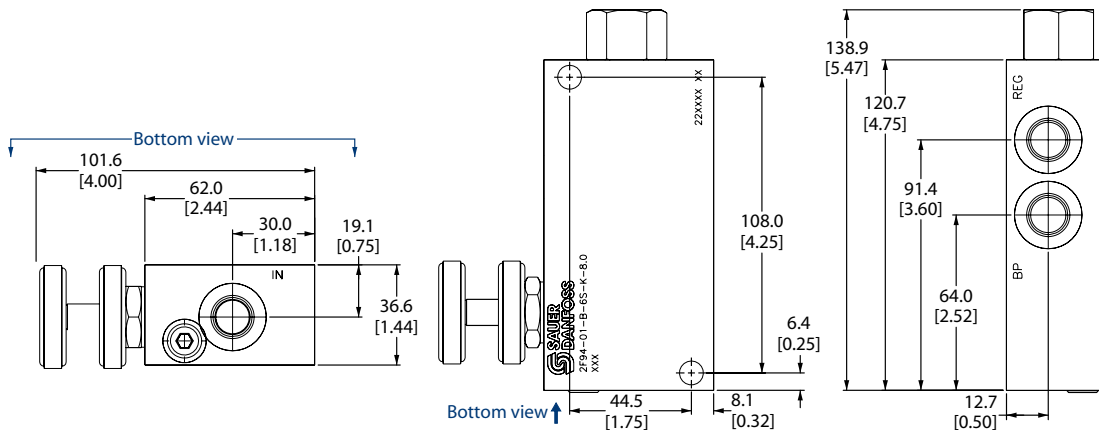
### Specifications

<b>Rated pressure</b>	210 bar [3000 psi]
<b>Max regulated flow</b>	30 l/min [8 US gal/min]
<b>Max inlet flow</b>	60 l/min [16 US gal/min]
<b>Weight</b>	1.00 kg [2.20 lb]
<b>Cavity</b>	none

### DIMENSIONS

mm in

#### Cross-sectional view



### ORDERING INFORMATION

2F94-01-B-6S-E-8.0

- Adjustment range**  
Code = 0-8 gpm
- Adjustment options**  
E = External adjustment  
K = Knob adjustment
- Body and ports**  
6S = Aluminum, #6 SAE
- Seals**  
B = Buna-N  
V = Viton
- Seal kits**  
Consult Factory  
Consult Factory